

TABLE OF CONTENTS

| | |
|--|----------|
| TABLE OF CONTENTS | 1 |
| 1- OVERVIEW | 2 |
| 2- PRINT PROTOCOL SETUP | 2 |
| 2-1 Description | 2 |
| 2-2 Install Postscript Print Driver..... | 2 |
| 2-3 Hardware Setup | 4 |
| 2-4 Test Printer Configuration | 6 |
| 2-5 Printing Protocols | 6 |
| REVISION HISTORY | 8 |

1- OVERVIEW

The Save/Restore/Print Protocol utilities are available on Release 8.3 or later systems. The Save/Restore Protocol is a customer utility to selectively Save/Restore customer protocols to/from MOD. Save/Restore Protocol utility is documented in the Operator Documentation. This does not require any setup by the Field Engineer (FE).

An FE would typically use the Guided Install GUI to Save/Restore all protocols to MOD. The normal SaveINFO done to save all configuration and calibration files also saves all customer protocols by default.

The Print Protocol utility does require setup by the FE. This utility requires additional hardware be purchased by the customer. A print driver must also be loaded to enable the printing capability.

2- PRINT PROTOCOL SETUP

Important: Print protocol requires true post-script printer and printer cable (not provided with the system). The printer must be a **true post-script** printer (e.g. Lexmark Optra S1855); **post-script compatible printers will not work**. The printer cable is a micro Centronics, IEEE 284, Type C (call Newark Electronics, part #204-0100 (Blackbox)).

A standard parallel printer cable is required for Indigo computers.

2-1 Description

The Print Protocol feature allows customers to print a hard copy of their scan protocols. This procedure provides the instructions to setup the printer and install the postscript print driver to enable the Print Protocol feature.

2-2 Install Postscript Print Driver

1. With the Signa software up and running, select the Service Desktop.
2. Insert the Boot/Update CD-ROM from the Operating Systems disk set into the CD-ROM drive.
3. Select **[C-shell]** to open a command window.
4. Type as follows:

```
{sdc@xxx} su <Enter> (login as super user)
           Password operator <Enter>
{sdc@xxx} mediad <Enter> (mounts the CD-ROM drive)
{sdc@xxx} /CDROM/opt/printsetup <Enter> (for black/white printer)
           /CDROM/opt/printsetup color <Enter> (for color printer)
```
5. The print driver install will take about 2 minutes. Portions of a sample printer driver install log follows. Note: There is one expected conflict error message that will be displayed during the load.

Default distribution to install from: /mnt/pkg/01000-MrpResSrv

For help on inst commands, type "help overview".

Inst 3.7 Main Menu

1. from [source ...] Specify location of software to be installed
2. open [source ...] Specify additional software locations
- ...

Inst>

Administrative Commands Menu

1. set [preferences] List all preferences or set/clear a preference
2. date [args] Display or set the system date
- ...

Admin>

Inst 3.7 Main Menu

1. from [source ...] Specify location of software to be installed
2. open [source ...] Specify additional software locations
- ...

Inst> Reading product descriptions .. 13%

Reading /var/inst/hist

Reading product descriptions .. 25%

Setting distribution to /CDROM/opt/dist1

Reading product descriptions .. 100% Done.

Inst>

...

Inst> Pre-installation check .. 8%

Checking space requirements .. 16%

Installing new versions of selected impr_base.sw subsystems

Installing/removing files .. 55%

...

Running exit-commands .. 98%

impr_print.sw.laserwriter: ((/bin/mv

\$rbase/var/spool/lp/model/psinterface \$rb

ase/var/spool/lp/model/OBSOLETE/psinterface; :) >/dev/null 2>&1)

Running exit-commands .. 99%

Checking dependencies .. 100% Done.

Installations and removals were successful.

New application icons will not appear in your Icon Catalog until you log out and log back in again (choose "Applications" on the Find toolchest).

You may continue with installations or quit now.

To install from another CD, change the CD in the drive and enter command "from".

Inst> Reading product descriptions .. 0%

Setting distribution to /CDROM/opt/dist2

Reading product descriptions .. 100% Done.

This software distribution contains overlay products. In order to

complete the installation, you may need to insert additional CDs (or specify additional network distribution directories) that contain the base software for these overlays.

If additional CDs are required, "Conflict" messages later in the installation will prompt you to load any other necessary CDs. (See the "overlay" help topic for more information.)

Inst>

...

```
Inst> Pre-installation check .. 8%
Checking space requirements .. 16%
Pre-installation check completed
Installing/removing fil .. 16%
Installing new versions of selected impr_base.sw subsystems
Installing/removing files .. 30%
impr_base.sw.impr: ( sh $rbase//usr/lib/ps/ditroff.font/linkfamily
$rbase /usr/
lib/ps/ditroff.font Times Courier Helvetica Symbol AvantGarde Bookman
Name:/usr/sbin/scanners" -syspage Scanning ; fi)
Running exit-commands .. 99%
Checking dependencies .. 100% Done.
Calculating sizes .. 100% Done.
Installations and removals were successful.
You may continue with installations or quit now.
```

To install from another CD, change the CD in the drive and enter command "from".

Inst> ERROR: INCOMPATIBLE SUBSYSTEMS INSTALLED **<== Expected conflict; ignore this**

```
The software installed on this system has existing conflicts.
Exit allowed because "rulesoverride" option is set.
Requickstarting ELF files (see rqsall(1)) .. 100% Done.
Printer software is now installed.....
Continuing with default printer configuration setup.
selectSoloPrinterAsDefault[3]: : cannot execute
Stopping lp spooler.
Starting lp spooler.
```

```
{sdc@xxxx}[3]
```

6. Type as follows:

```
{sdc@xxxx} eject /CDROM <Enter> (remove Boot/Update CD-ROM)
```

7. Reboot Signa to activate the printer driver.

2-3 Hardware Setup

A printer with built-in Postscript support (i.e. internal postscript print driver) is required. The printer is attached to the SGI computer parallel port.

For Octane computers, a special 36-pin high-density Centronix connector is required. See Illustration 2-1 for location of parallel port for Octane computers.

For Indigo computers, a standard print cable is required to connect to the parallel port. See Illustration 2-2 for location of parallel port for Indigo computers.

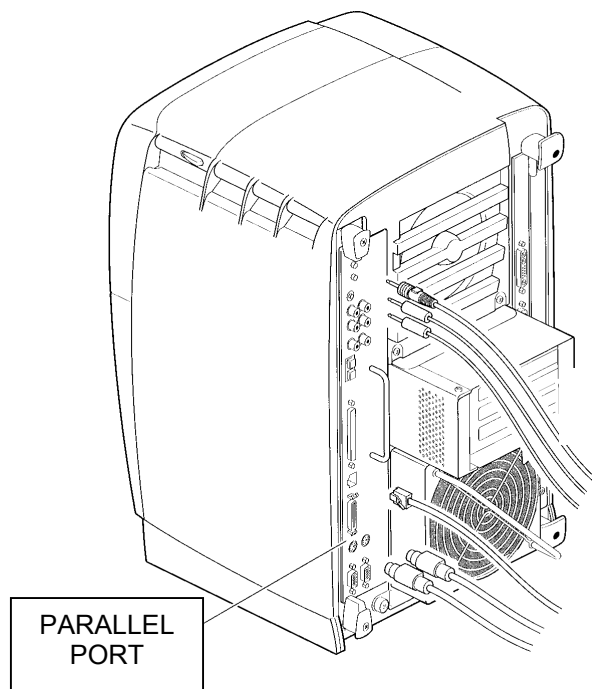
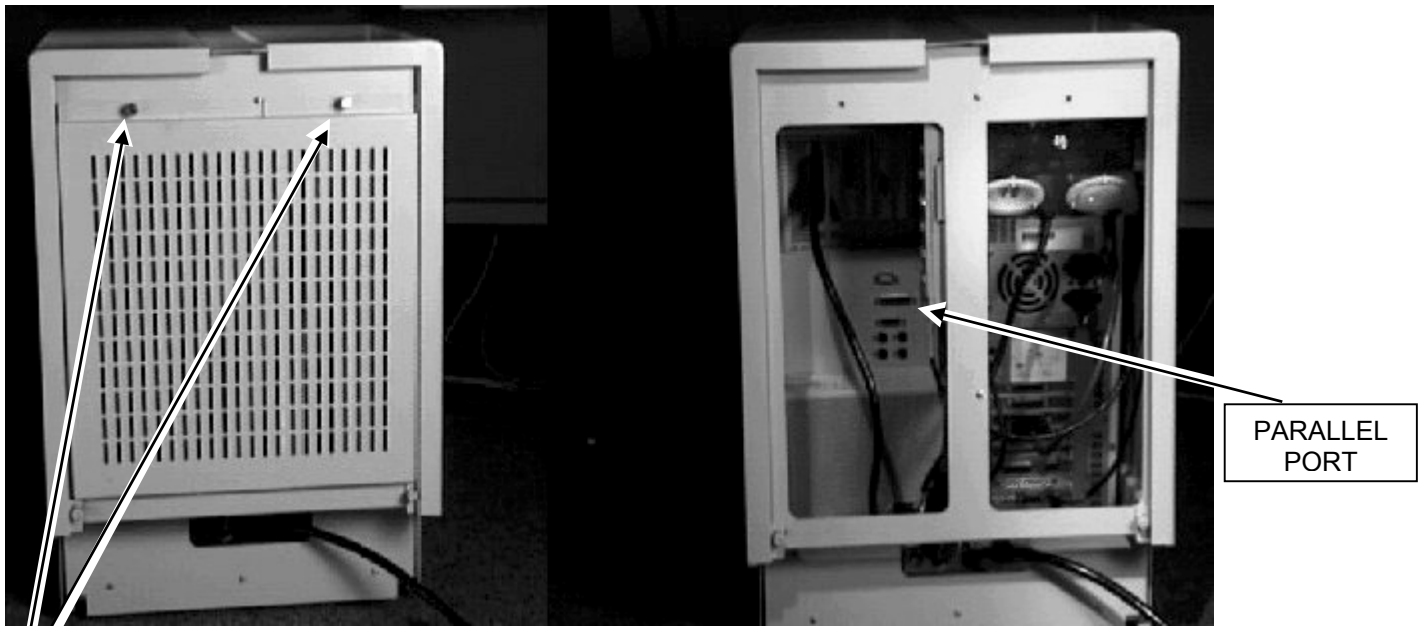


ILLUSTRATION 2-1
OCTANE PARALLEL PORT



REAR OF INDIGO – PARALLEL PORT
ILLUSTRATION 2-2

- a) Loosen the two thumb screws at the top of the cover.
- b) Pull the top of the cover toward you slightly and lift the cover out of the way.

2-4 Test Printer Configuration

Test the printer configuration as follows. This can only be done after the postscript print driver is loaded and the system was rebooted. Proceed as follows after the printer is cabled and powered up.

1. Open a C-shell.
2. Type: **printers <Enter>** (brings up the print manager)
3. Double-click on the **LocalIPS** print icon.
4. Under **Printer** pulldown menu, select **Send Test Page**. Verify test page prints.

2-5 Printing Protocols

1. Go to the Service Desktop and select **[Utilities]**.
2. Select **Save/Restore/PrintProtocol**, then **[Start]**. This opens the protUtilShell window. See Illustration 2-2.
3. Select anatomy, and protocol to print, then select **[Print]**.

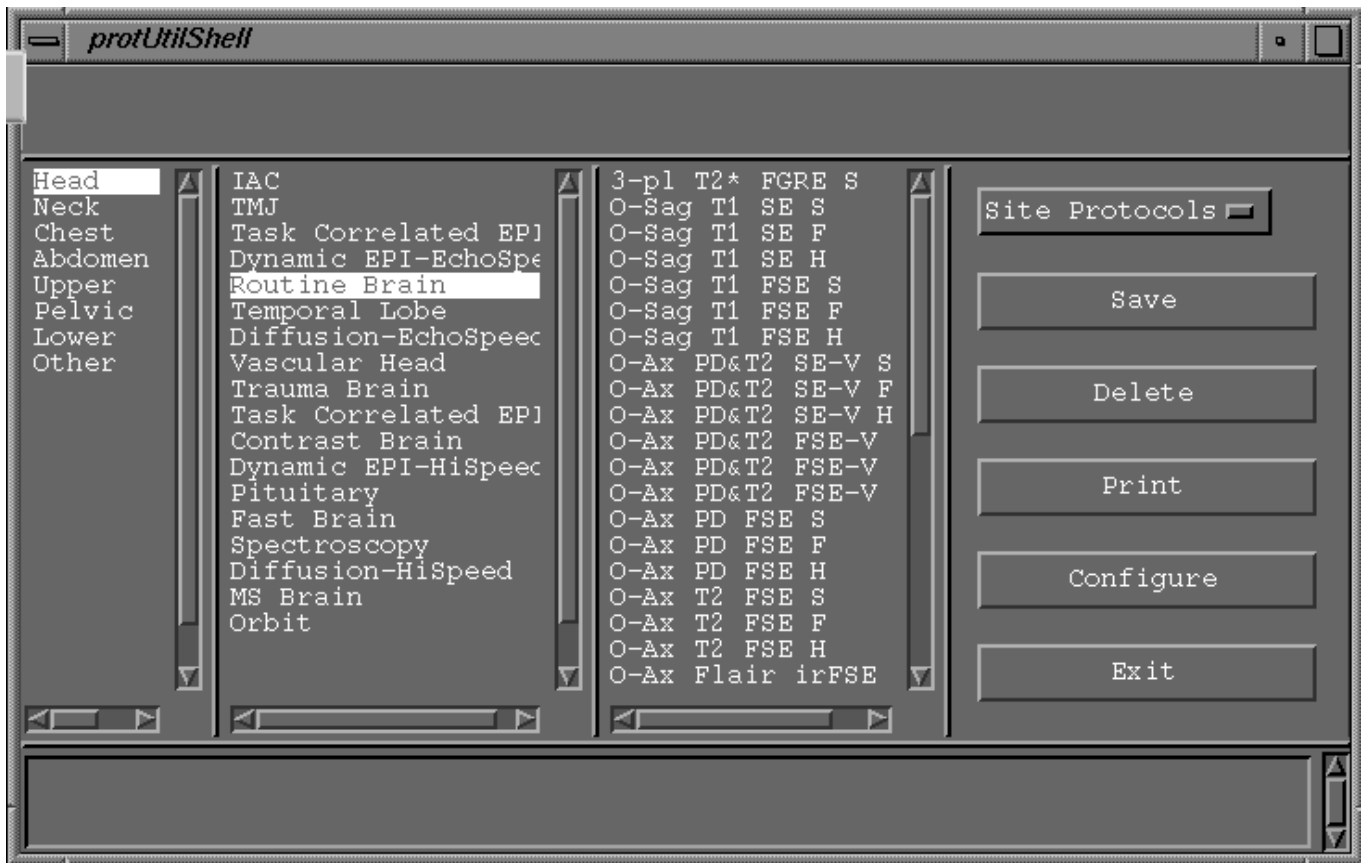


ILLUSTRATION 2-2
PROTOCOL SAVE/RESTORE/PRINT WINDOW

REVISION HISTORY

| REV | DATE | AUTHOR | PRIMARY REASONS FOR CHANGE |
|-----|--------------|----------|---------------------------------|
| 0 | Mar. 7, 2000 | J. Wolak | Initial release for Release 8.3 |
| | | | |
| | | | |
| | | | |
| | | | |