

TABLE OF CONTENTS

TABLE OF CONTENTS	1
Determining Software load type To use on your system	2
1- Loading Operator workspace PC computer - Release 8.x	3
1-1 Description	3
1-2 Overview	3
1-3 Hardware Description	3
1-4 Loading Windows 95 Software on the PC	4
1-4-A For Windows 95 Upgrade	4
1-4-B For Windows 95 OEM Version	5
1-5 Loading Applications/Drivers on the PC	8
1-6 PC Configuration	9
1-6-1 Accessing Configuration Controls	9
1-6-2 Keyboard Setting	10
1-6-3 Network Configuration	10
1-6-4 LCD Screen Resolution	12
1-6-5 Setting PC Local Host File	14
1-6-6 Setting Language for WaveTime and Service Key Tools	15
2- Loading OW PC from 2192746-2 GE PC Boot Floppy and Software Image CD ROM	17
2-1 Determine the PC type to be loaded	17
2-2 Loading Software	19
2-2-1 Software load on LXPC 1,2 and 3	19
2-2-2 Loading the LX4PC	19
2-3 PC Configuration	20
2-3-1 Accessing Configuration Controls	20
2-3-2 Keyboard Setting	21
2-3-3 Network Configuration	21
2-3-4 LCD Screen Resolution	23
2-3-5 Setting PC Local Host File	25
2-3-6 Setting Language for WaveTime and Service Key Tools	26
2-4 WS-FTP95 PRO (FTP Tool)	28
REVISION HISTORY	31

DETERMINING SOFTWARE LOAD TYPE TO USE ON YOUR SYSTEM**WARNING**

BE SURE TO USE THE CORRECT SOFTWARE LOAD FOR YOUR PC. USING THE WRONG SOFTWARE SET WILL INCREASE THE TIME TO LOAD SOFTWARE FROM 5 MINUTES TO > 1 HOUR WITH A INCREASED CHANCE FOR MISTAKE.

Two methods for PC software load is available for the Signa 8x PC subsystem.

1. If the only software disks available are Microsoft Windows95 or Windows95 Upgrade CD ROM and several floppies, proceed with **Section 1** for installation instructions (**Long Method**).
2. If the PC to be loaded has available a CD ROM and Boot Floppy set 2192746-4, go to **Section 2** of this document for loading instructions (**Short Method**). The software for this method is being made available to forward production systems (Systems being shipped and installed after November 30, 1998) and on PC FRU replacements.

1- LOADING OPERATOR WORKSPACE PC COMPUTER - RELEASE 8.X

1-1 Description

This procedure describes loading software on the Operator Workspace PC computer for Signa Horizon LX and Signa CVMR systems.

1-2 Overview

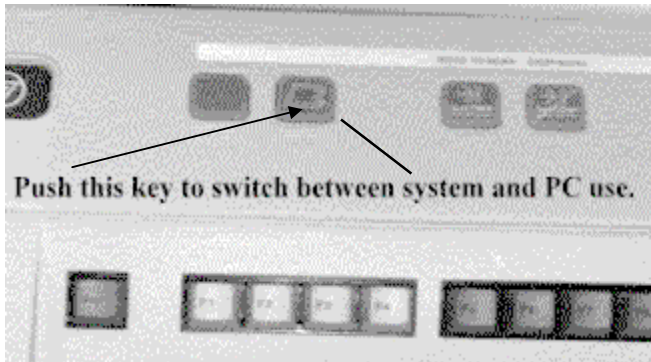
This section describes the PC software load procedure. To complete the software load, several disks containing software and drivers are used.

WARNING!

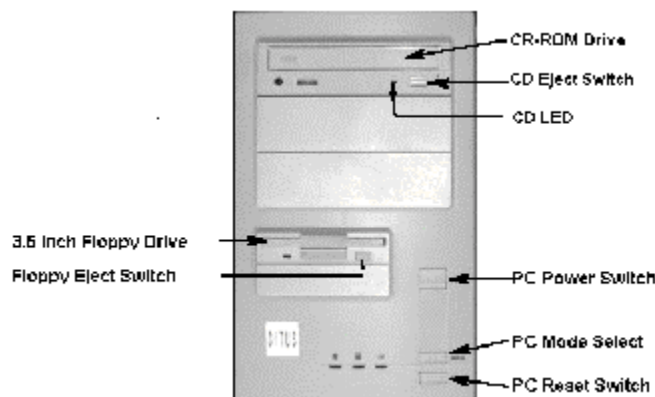
The software package which includes Microsoft Windows 95 also includes a Microsoft Windows 95 user manual. On the front of this manual is a Microsoft “Certificate of Authenticity”. The Certificate of Authenticity contains the Product ID Code which is needed during the install process. Without this code the software can not be installed. Be sure to keep the software, Certificate of Authenticity and or the Product ID Code in a safe place in the event the PC will need to be reloaded at a later date.

For this procedure, you must have the IP address for both the SGI Host computer and for the PC.

1-3 Hardware Description



The Signa Horizon LX utilizes one keyboard shared between the SGI host computer and the PC system. To switch control of the keyboard and mouse from the host to the PC or back again toggle the system select switch found on the keyboard.



To the left is shown the standard Signa Horizon LX PC front panel with drive locations and power and reset controls.

1-4 Loading Windows 95 Software on the PC

Note

Look at your Windows 95 CD-ROM. If it is labeled **Windows 95 Upgrade**, proceed with section 1-4-A. Look at the Windows 95 manual. On the front cover is your product ID. If it has "**OEM**" in the ID number, proceed with section 1-4-B.

1-4-A For Windows 95 Upgrade

1. Switch the system keyboard control to the PC subsystem. Insert the PC boot floppy into the PC's 3.5 inch floppy drive and then insert the Windows 95 CD ROM into the PC's CD ROM drive. Press the reset button on the PC. The PC boots from the floppy and stops at the PC load from cold menu.

2. The first function to be performed is option "**A - Run Fdisk**".
Enter "**N**" and **[Enter]** to enable large disk support
Press "**3**" and **[Enter]** to delete the partition or logical DOS drive
Press "**1**" and **[Enter]** to delete the primary DOS partition
Press "**1**" and **[Enter]** to delete partition #1
Type the volume label as it appears at the top of the screen and press **[Enter]**
Enter "**Y**" to the prompt "Are you sure..." and press **[Enter]**
Press **Esc** once
Press "**1**" and **[Enter]** to create the DOS partition or logical DOS drive
Press "**1**" and **[Enter]** to create the primary DOS partition
Enter "**Y**" and **[Enter]** to use the maximum available hard drive size
Press **Esc** to exit the fdisk utility
Press **CTRL-ALT-DELETE** to reboot the computer

3. The PC load from cold menu appears again. To perform the setup of software, choose option "**B**". The following message appears (type **Y** to continue):

```
WARNING! This procedure will Install LX2 PC Software
```

```
- ANY OTHER USER SOFTWARE WILL BE LOST  
- NETWORK CONFIGURATION WILL BE SET TO FACTOR DEFAULTS AND WILL NEED TO BE  
  RESET TO SITE CONFIGURATION.
```

```
DO YOU WISH TO CONTINUE?
```

```
Enter: [Y/N]? Y
```

4. Type "**Y**" to the question "Proceed with format?" and press **[Enter]**.
5. The computer now begins installing Windows 95. A message appears stating that the directory C:\Windows already exists. When asked if you want to continue, click on **Yes**. When the load is complete the system reboots and reenters the PC load from cold menu. At this time type **X** to exit to DOS. **Remove both the CD ROM and the floppy disk**. Store both in a safe location. Reboot the PC by pressing **CTRL-ALT-DELETE** on the keyboard.
6. The computer reboots into Microsoft Windows 95. As it reboots, it asks for a user name and password. Enter the username of **sd**, leaving the password blank, click on **OK**. The computer will then want to verify the password. Make sure both lines are blank and click on **OK** again. The computer finalizes the first part of the installation and reboots itself.

7. After the computer restarts, click on the **Close** button to close the “Welcome to Windows 95” screen.
8. Click on **Start/Settings/Control Panel**. Now double-click on **Add New Hardware**. Click on **Next**, **Next**, and **Next** again. The computer searches for new hardware. This may take about 5 to 10 minutes. When the computer finishes, click on **Finish**. When prompted to restart the computer, click on **Yes**.
9. When the computer reboots, a message asks if you want to continue to receive DHCP error messages. Click on **No**. The next window to display is the **Welcome to Windows 95** screen. Click on the by “Show this Welcome Screen” to clear the check-box. Click on the **Close** button on the Welcome screen to close it.

Note

Important! When doing step 10, If the display adapter shown is not ATI VGA Wonder, Do NOT remove it. Keep what ever display adapter is shown and skip steps 10 and 11 of this section.

10. The **Control Panel** window should still be showing. Double-click on **System**. Under the **Device Manager** tab in the System Properties window, look for **Display Adapters**. Click on the preceding **+**. Click on **ATI VGA Wonder** and click on **Remove** and **OK**. The computer prompt you to restart. Click on **Yes**.
11. As the computer reboots, it identifies the additional hardware. First is the PCI VGA Compatible Display Adapter. Put the **Signa Horizon LX PC Software** in the computer. As the New Hardware Found Wizard appears, click on **OK**, in the path edit window type “**d:\ati_drv**” and **OK** again. The computer will need to restart. Click on **Yes** to restart.
12. After the computer restarts, click on the by “Show this screen...” to clear the check-box on the ATI Desktop Help window. Click on the **X** button in the upper right corner of the ATI Desktop Help window to close it. Close the Control Panel window by clicking on the **X** button in the upper right corner of the Control Panel window.

1-4-B For Windows 95 OEM Version

1. Switch the system keyboard control to the PC subsystem. Insert the PC boot floppy into the PC's 3.5 inch floppy drive and then insert the Windows 95 CD ROM into the PC's CD ROM drive. Press the reset button on the PC. The PC boots from the floppy and stops at the PC load from cold menu.
2. The first function to be performed is option “**A - Run Fdisk**”.
Enter “**Y**” and **[Enter]** to enable large disk support
Press “**3**” and **[Enter]** to delete the partition or logical DOS drive
Press “**1**” and **[Enter]** to delete the primary DOS partition
Press “**1**” and **[Enter]** to delete partition #1
Type the volume label as it appears at the top of the screen and press **[Enter]**
Enter “**Y**” to the prompt “Are you sure...” and press **[Enter]**
Press **Esc** once
Press “**1**” and **[Enter]** to create the DOS partition or logical DOS drive
Press “**1**” and **[Enter]** to create the primary DOS partition
Enter “**Y**” and **[Enter]** to use the maximum available hard drive size

Press **Esc** to exit the fdisk utility

Press **CTRL-ALT-DELETE** to reboot the computer

3. The PC load from cold menu appears again. To perform the setup of software, choose option "**B**". The following message will appear (type **Y** to continue):

```
WARNING! This procedure will Install LX2 PC Software
```

- ANY OTHER USER SOFTWARE WILL BE LOST
- NETWORK CONFIGURATION WILL BE SET TO FACTOR DEFAULTS AND WILL NEED TO BE RESET TO SITE CONFIGURATION.

```
DO YOU WISH TO CONTINUE?
```

```
Enter: [Y/N]? Y
```

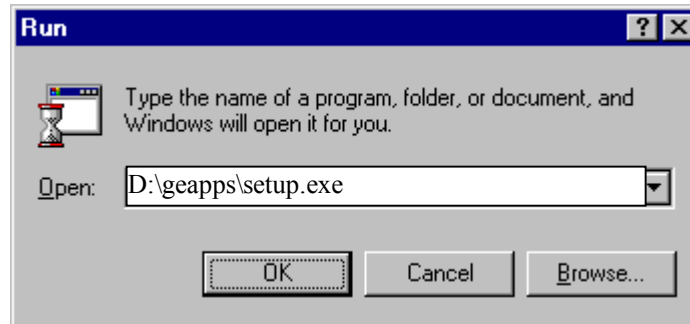
4. Type "**Y**" to the question "Proceed with format?" and press **[Enter]**.
5. The computer begins installing Windows 95. A message appears stating that the directory C:\Windows already exists. When asked if you want to continue, click on **Yes**. When the PC asks for the OEM number to be reentered, click on **Reenter** and type in **the OEM number found with the Windows 95 Certificate of Authenticity** and click on **Next**. When the load is complete the system reboots and reenters the PC load from cold menu. At this time type **X** to exit to DOS. **Remove both the CD ROM and the disk**. Store both in a safe location. Reboot the PC by pressing **CTRL-ALT-DELETE** on the keyboard.
6. The computer reboots into Microsoft Windows 95. As it reboots, the computer asks for a user name and password. Enter the username of **sdc**, leaving the password blank, click on **OK**. The computer will then want to verify the password. Make sure both lines are blank and click on **OK** again. The computer finalizes the first part of the installation and reboots itself.
7. After the computer restarts, click on the **Close** button to close the "Welcome to Windows 95" screen. Click on **Start/Settings/Control Panel**. Now double-click on **System**.
8. Under the **Device Manager** tab in the System Properties window, look for **Display Adapters**. Click on the preceding **+**. Click on **Standard PCI Graphics Adapter** and click on **Remove** and **OK**. The computer prompts you to restart. Click on **Yes**.
9. As the computer reboots, it identifies the additional hardware. First is the Standard PCI Graphics Adapter. Put the **Signa Horizon LX PC Software Cdrom** in the computer. As the Update Device Driver Wizard appears, click on **Next**. Click on **Other Locations**, type in the path of **D:\Video** and click **OK**. The computer identifies the updated driver (STB Velocity 128 (TV support)). Click on **Finish**. Next, you are prompted for a disk. Click on **OK** to acknowledge the message, enter the path **D:\Video**, click on **OK**. The computer will need to restart. Click on **Yes** to restart.
10. After the computer restarts, the first window to display is the **Welcome to Windows 95** screen. Click on the by Show this Welcome Screen to clear the check-box. Click on the **Close** button on the Welcome screen to close it. The Control Panel window should still be showing. Double-click on **System**. Under the **Device Manager** tab, click on the **+** preceding **Other Devices**. Click on **OPL3-SA3 Snd System**, click on **Remove**, and click on **OK**. Restart the computer by clicking on **Start/Shutdown/Restart the computer/Yes**.

11. As the computer restarts, it identifies the audio system. As the Update Device Driver Wizard appears, click on **Next**. Click on **Other Locations**, type in the path of **D:\Audio** and click **OK**. The Update Device Driver Wizard identifies the audio system (Yamaha OPL3-SAX) and prompts you to click on **Finish** to complete the setup. You are then prompted for disk 1. Click on **OK** to acknowledge the message, type in **D:\Audio** for the path, and click on **OK**. You are then prompted for the Windows 95 CD ROM. Click on **OK** to acknowledge the message, enter the path of **C:\WIN95**, and click on **OK**.
12. The Control Panel window should still be showing. Double-click on **System**. Under the **Device Manager** tab, click on the **+** preceding **Other Devices**. Click on **PCI Ethernet Controller**, click on **Remove**, and click on **OK**. Restart the computer by clicking on **Start/Shutdown/Restart the computer/Yes**.
13. As the computer restarts, the Update Device Driver Wizard identifies the network card. Click on **Next**. Click on **Other Locations**, type in the path of **D:\Network** and click on **OK**. The Update Device Driver Wizard identifies the network card (3Com Fast Etherlink XL 10/100Mb TX Ethernet Adapter) and prompts you to click on **Finish** to complete the setup. You are then prompted for disk 2. Leave the cdrom in and click on **OK** to acknowledge the message, enter the path **D:\Network**, and click on **OK**. The computer then asks for the Windows 95 CD ROM. Click on **OK** to acknowledge the message, enter the path **C:\WIN95**, and click on **OK**. A message will ask if you want to continue to receive future DHCP messages. Click on **No**. Close the Control Panel window by clicking on the **X** in the upper right corner of the window.

1-5 Loading Applications/Drivers on the PC

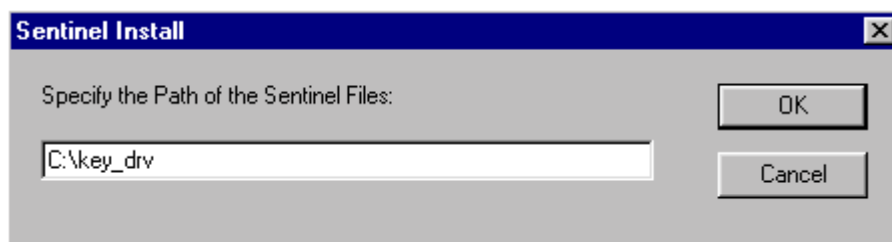
This section explains how to load Signa applications and drivers to the PC's hard drive.

With the **Signa Horizon LX PC Software CD-ROM** still in the PC, move the system cursor down to **[Start]** button and single click. Choose the **[Run]** option with a single click.



In the Open dialog box type: **D:\geapps\setup.exe** Click the **[OK]** Button to start the Install. A dialog box will appear. Chose the **[Next]** button. The entire load takes about 2 minutes to complete.

A pop-up window appears labeled: "**Sentinel Driver Setup Program**". In the left corner of the window is the **[Functions]** menu item. Use the system cursor and left mouse button to select **[Functions]** and then the **[Install Sentinel Driver]** option. Another pop-up window appears, asking for the location of the driver.




In the edit box type: **c : \key_drv** then push the **[OK]** button. The Installation takes < 1 second.

When done, the program informs you that the driver has been installed. Click **OK** to acknowledge the message. At this point, exit the program by clicking on **[Functions]** and **[Quit]**, remove the CD from the computer and reboot the computer by clicking on **Yes, I want to restart my computer now** and **Finish**.

Note

- When Windows 95 restarts at this time, WaveTime and Security Key programs will automatically start. Some errors may be noted because the PC network configurations are not set. These errors can be ignored at that time. The Service Key window appears. Push the **[Hide]** button to get the window out of the way. Minimize any windows and continue with this section. (Section 1-6 contains instructions on configuring the PC.)
- The computer may behave erratically until the Sentinel Driver is configured. Attach the Hardware Key to the computer and continue with the configuring of the Sentinel Driver. After configuring, the Key may be removed.

You must now configure the Sentinel driver. Before configuration can begin, minimize the **Scantime** window by clicking on the minimize button in the upper right corner of the **Scantime** window. (Minimize button )

Click on **Start | Run**, type **C:\Windows\System\Rnbosent\Sentw95.exe** and click on **OK**. Click on **[Functions]** and **[Configure driver]**. Select **LPT2** (physical address of 278) and click on **Edit**. Click on **[No]** to the question "Use this port?" and click on **OK**. Click on **OK** to the Sentinel driver window when it asks if the user wants to continue. Click on **OK** again. Finally click on **OK** to the message about needing to restart the computer. Quit the program by using the system cursor and left mouse button to select **[Functions]** and then the **[Quit]** option. Restart the computer by clicking on **Start | Shutdown | Restart computer | Yes**.

1-6 PC Configuration

The following configurations are necessary to make sure that the PC subsystem will be able to communicate with the Signa host computer.

1-6-1 Accessing Configuration Controls



Note: The Task bar containing the start button needs to be configured to "auto hide". Click on **START | SETTINGS | TASKBAR**. Click on the checkbox in front of **AUTO HIDE**. Click on **OK**. Once the Task bar is set to Auto hide, it can be visible by dragging (no clicking) the mouse pointer down to the bottom of the screen which will cause the system to show the Task Bar again. Moving the cursor away from the bottom of the screen will cause the Task bar to hide again.

Click on **Start | Settings | Control Panel**. The Control Panel displays icons used to access control setting.

1-6-2 Keyboard Setting

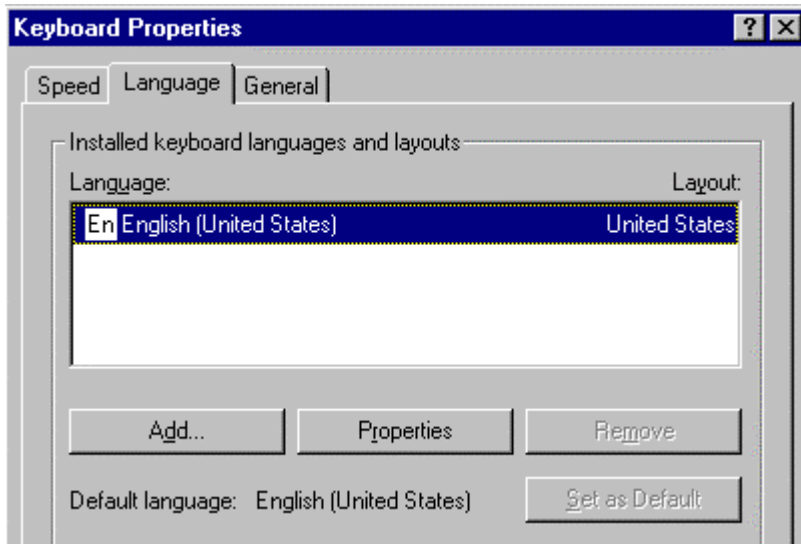
Note

The default configuration for the keyboard is English. There is no need to complete this section unless you are using a keyboard other than English.



1. Find the Icon “Keyboard”, then double click it with the left mouse button.

Keyboard



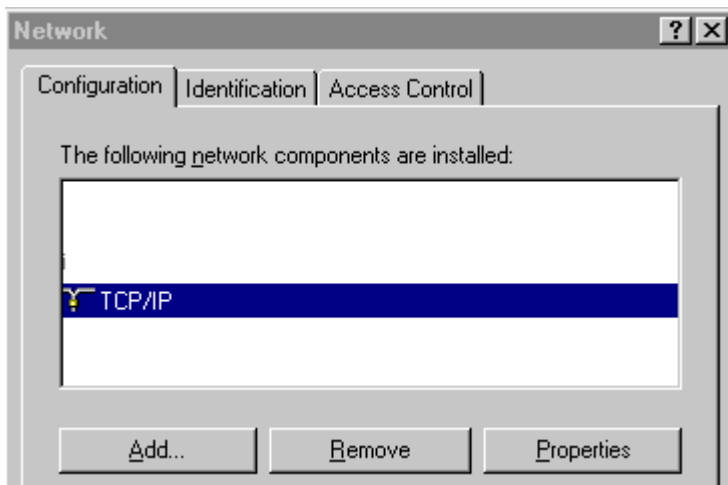
2. Choose the “Language” tab. To change the default language, select the **[Add]** button. A pop-up box will give a selection of countries to choose from. Select desired country for the keyboard being used on the system you are loading. Then select the **[OK]** button, then the **[Apply]** button at the bottom of the Properties box. Windows will need to reboot for changes to take affect.

1-6-3 Network Configuration

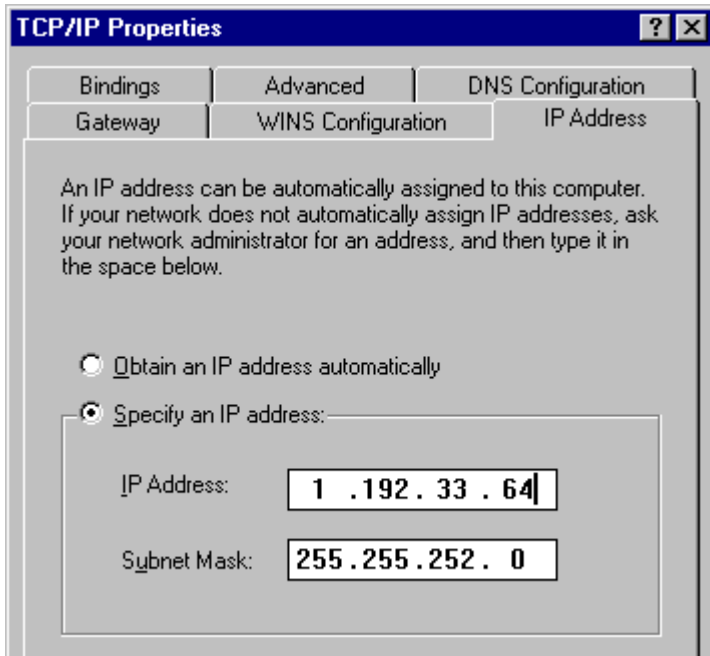


1. Locate and open the **[Network]** icon by double clicking with the left mouse button.

Network



2. At the main Network box, select the “TCP/IP - 3Com.....” entry and select the **[Properties]** button.



Note: Use the IP Address and Subnet Mask provided by your network administrator or recorded in Appendix A.

3. Select the **[IP Address]** tab. Make sure the "Specify an IP Address" is selected. Enter the IP address that will be used for the system PC. For Subnet Mask enter; **255.255.255.0** (or site Netmask) . Select the **[OK]** button at the bottom of the "Properties" page, then the **[OK]** button at the bottom of the "Network" page. Close Control Panel by clicking on the **X** in the upper right corner of the window. Select **[YES]** to reboot the PC for changes to take effect.

1-6-4 LCD Screen Resolution

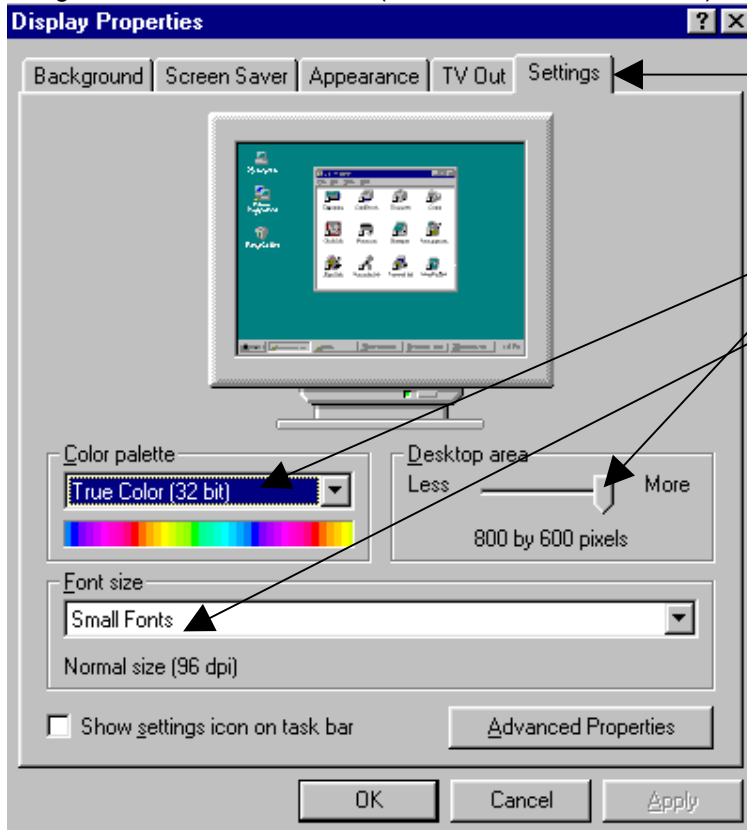
Note
Only do this procedure if the LCD PC display is a Panoview 600 model.

Two types of LCD PC display devices are currently being used. The older model is Nview and the latest model is Panoview 600. For the Nview, the default resolution of 640 by 480 is the highest possible setting. So, no resolution adjustments are made to the Nview LCD. If the system being loaded contains a Panoview 600, do the following to adjust the screen resolution:

1. Open the system Control Panel by clicking on the **[Start]** button, then **[Settings]**, then **[Control Panel]**.
1. Find the "Display" Icon and double click it.



Figure 1A: STB Video driver (new Panoview 600 monitor)



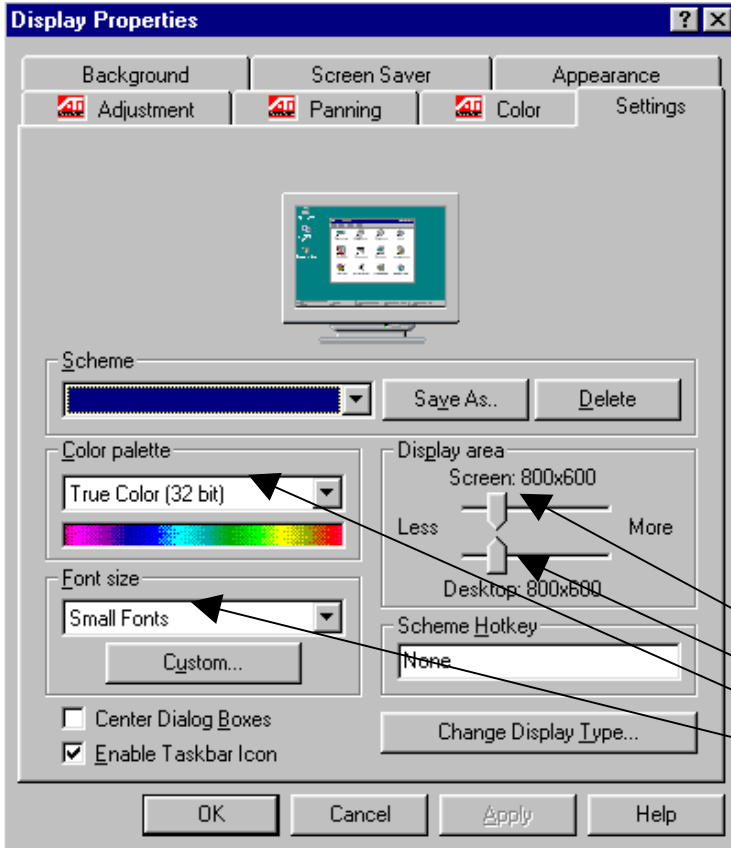
3. On the next screen, select the **[Settings]** tab. The screen will look like one of the following two screen shots. Set the following settings:

If your screen looks like the Figure 1A do the following:

- Color Palette to "True Color (32 bit)"
- Desktop Area to "800 x 600"
- Font Size to "Small Fonts"

Select the **[OK]** button at the bottom of the screen. When asked to configure the monitor, select **[YES]**. Select **[Standard Monitor Types]** on the left side of the screen and **[Super VGA 800 x 600]** on the right side of the screen. Click on **[OK]** twice. The computer tests the configuration and asks "Would you like to Restart the computer with the new settings?" Click on **[OK]**; the computer will restart. When Windows 95 restarts, you can close the control panel by clicking on the **X** in the upper right corner of the window.

Figure 1B: ATI Video driver (New Panoview 600 Monitor)



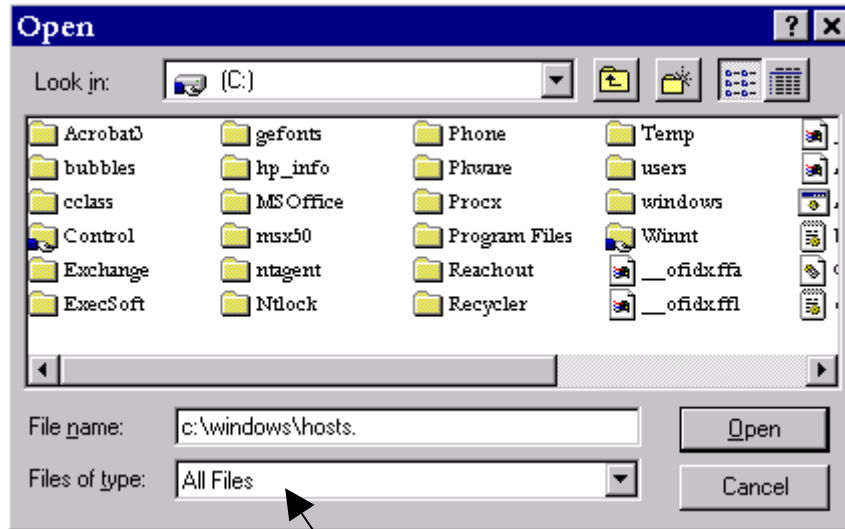
If your screen looks like the Figure 1B do the following:

Click on the **[Change Display Type]** button. Click on the **[Change]** button by Monitor Type. Select **[Standard Monitor Types]** on the left side of the screen and **[Super VGA 800 x 600]** on the right side of the screen. Click on **[OK]**. Click on **[Close]** to the Change Display Type window. Now change the Display Area to 800 x 600. Click on **[OK]** to the Display Properties window. Click on **[OK]**. The computer will test the configuration and ask the user "Do you want to keep these settings?" Click on **[YES]** and close control panel by clicking on the **X** in the upper right corner of the window.

- Screen Area to "800 x 600"
- Desktop Area to "800 x 600"
- Color Palette to "True Color (32 bit)"
- Font Size to "Small Fonts"

1-6-5 Setting PC Local Host File

To configure the local network host file select the Task Bar **[Start]** button. Move up and select **“Programs”** then **“Accessories”** then over to **“NotePad”**. The NotePad text editor will start. In NotePad, select **[File]** then **[Open]**.



Change the **“File of type”** box to **“All Files(*.*)”**.

In the **“File Name”** box type:

c:\windows\hosts.

Note: The period after c:\windows\hosts **MUST** be included in the **“File Name”** box.

The host file will now open. Add the following new entries at the bottom of the host file.

x.x.x.x	OPBOX_PC	(X's should be replaced with the IP Address of this PC)
x.x.x.x	1x-mr	(X's should be replaced with the IP Address of the SGI Host)

In NotePad, select **“File”** then **“Save”** and **“File”** then **“Exit”** Note Pad.

1-6-6 Setting Language for WaveTime and Service Key Tools.

The Wavetime tool which is used to keep track of scan times as well as patient gating information and the Service Key dialog box, are multi-language application. The Service Key application also allows messages and information to be set. The default base language for the PC tools is English. It will not be necessary to complete this task unless some other language is desired. If English is the desired language, then proceed to **“Setting Messages In Service Key Dialog Box”**

Setting Wavetime base language

1. Go to Windows 95 task bar and select the **[Start]** button.
2. Select **“Programs” then “GE Medical Systems”**, then **“Set Language”** option. The “Main Menu” program is displayed:

```

Main Menu
(L)anguage for Wavetime and Skey
(E)dit Skey Text Message
(Q)uit program
    
```

3. Type: **L <Enter>** to set the base language for the applications. The “Language Menu” is displayed:

```

Language Menu
(E)nglish
(F)rench
(G)erman
(I)talian
S(P)anish
(S)wedish
(R)eturn to Main Menu
    
```

4. Select the letter of the language desired for the system being configured.
Example: **e <Enter>** (This would set English as the primary language.)
5. The program then prompts for verification of the selection.
“You have selected <language chosen> language [Y/N]”
6. If correct type: **y <Enter>** to except the change or **n <Enter>** to return to the selection menu.

Setting Messages In Service Key Dialog Box

The Service Key dialog box contains a message field that can be set to reflect the needs of the site. If no changes are desired, this section can be skipped. Do the following to set messages:

1. If not already in the “Set Language” menu, go to Windows 95 task bar and select the **[Start]** button.
2. Select **“Programs” then “GE Medical Systems”**, then **“Set Language”** option. The “Main Menu” is displayed:

```

Main Menu
(L)anguage for Wavetime and Skey
(E)dit Skey Text Message
(Q)uit program
    
```

3. Type: **E <Enter>** to set the base language for the service key messages. The “Language Menu” is displayed:

Language Menu

- (E)nglish
- (F)rench
- (G)erman
- (I)talian
- S(P)anish
- (S)wedish
- (R)eturn to Main Menu

4. Select the letter of the language desired for the Service Key message box.
Example: **E <Enter>** (This would set English as the primary language.)
5. The program then prompts for verification of the selection:
"You have selected <language chosen> language [Y/N]"
6. If correct type: **y <Enter>** to except the change or **n <Enter>** to return to the selection menu.

Five lines of message are available at 30 characters for the Service Key Message box. All lines can be updated with a message or select lines can be updated or changed as desired. The message edit menu is presented as follows:

Message edit Menu

- (1) Edit Message Line 1
- (2) Edit Message Line 1
- (3) Edit Message Line 1
- (4) Edit Message Line 1
- (5) Edit Message Line 1
- (R) Return to Main Menu
- (S) Save and Return to Main Menu

1. To change a message line type the following on the input field: **1 <Enter>**
2. Type your message up to 30 characters including spaces and then the **<Enter>** key.
3. Repeat this process for all five lines or only the lines that need updating. When finished updating, type **S <Enter>** to save changes and return to the main menu. Or type **R <Enter>** to go to the main menu without making any changes.

4. At the main menu,

- Main Menu
- (L)anguage for Wavetime and Skey
- (E)dit Skey Text Message
- (Q)uit program

type **Q <Enter>** to exit.

5. Close the DOS window by typing, **exit <Enter>** at the DOS prompt.

2- LOADING OW PC FROM 2192746-2 GE PC BOOT FLOOPY AND SOFTWARE IMAGE CD ROM

Required material:

- 2192746-4 GE PC Boot Floppy and Software Image CD ROM.

2-1 Determine the PC type to be loaded.

It will first be necessary to determine what vintage PC is being used by the system to be loaded. Open the Operator work space cabinet. The PC is on the left side of cabinet.



When starting the software load process this PC would represent, **LX1PC**.

When Starting the software load process,
This PC would represent, **LX2PC**.





When Starting the software load process,
This PC would represent, **LXPC3**.



When Starting the software load process,
This PC would represent, **LXPC4**.
This PC starting in second half 2000 does not
Use a CD/floppy set to reload software. But instead
Only uses 2284297-2 boot floppy. The software for
Reloading is mirrored on the hard drive.
Refer to section 2-2-2.

2-2 Loading Software

2-2-1 Software load on LXPC 1,2 and 3

1. Switch the system keyboard to the PC subsystem. See section 1-3 of this document for information on switching the keyboard.
2. Put the 2192746-4 Boot Floppy into the floppy drive and the CD into the CD ROM drive.
3. Reboot the PC by either pushing the **[Reset]** button on the front of the PC or cycling power to the PC.
4. The system will boot to the following menu.

```
A - Load Base Software {Load form Cold}  
X - Exit
```

Push **[A]** on the Keyboard to continue or **[X]** if you wish to abort the software load

5. A warning message will appear that all previously loaded software on the PC will be lost. Select **[Y]** to continue the software load.
6. The next thing seen will be Microsoft License agreement. When the first half of the agreement displays on the screen, **press any key...** to view the second half. Then press the **[Y]** key to accept the agreement and continue to load the software. Pressing **[N]** will terminate the software load.
7. The following menu will appear:

```
Chose Base Software You Wish To Install  
A  LX1PC  
B  LX2PC  
C  LX3PC  
X  EXIT
```

Chose the PC as per section 2-1 of this document. Or chose **[X]** to exit. This is the last opportunity to abort loading software.

8. The software load itself will begin. It will take approximately 2 minutes to load. When finished, remove the Boot Floppy and CD ROM and reset or power cycle the PC.

Note

If the PC boots to Windows 95 and reports that drivers need to be loaded or that drivers are loading, then the wrong PC was chosen for the load. Restart the load process and chose the right PC.

2-2-2 Loading the LX4PC

1. Switch the system keyboard to the PC subsystem. See section 1-3 of this document for information on switching the keyboard.
2. Put the 2284297-2 Boot Floppy into the floppy drive and the CD into the CD ROM drive.
3. Reboot the PC by either pushing the **[Reset]** button on the front of the PC or cycling power to the PC.
4. The system will boot to the following message:

GE Medical Systems
Signa PC Subsystem Software Load Floppy
2284297-2 - 9/29/00

WARNING! THIS PROCEDURE WILL RESTORE THE PC HARD DRIVE DATA TO ITS ORIGINAL CONDITION AS SHIPPED.

This disk is ONLY intended for PC 2284297.

- ANY OTHER USER LOADED SOFTWARE WILL BE LOST
- NETWORK CONFIGURATION WILL NEED TO BE RESET TO SITE CONFIGURATION

Do You Wish To Continue?

5. Select **Y** to continue.
6. Press any key to continue.
7. Select **Y** to agree to the license agreement.

The primary partition will be reloaded as it was configured when shipped, this should take about 5 minutes. If you are unable to reload, verify that the boot floppy is good by attempting to read it on another PC. If it is apparent that the hard drive is corrupted or defective, then the PC must be replaced.

2-3 PC Configuration

The following configurations are necessary to make sure that the PC subsystem will be able to communicate with the Signa host computer.

2-3-1 Accessing Configuration Controls



Note: The Task bar is set to Auto hide, it can be visible by dragging (no clicking) the mouse pointer down to the bottom of the screen which will cause the system to show the Task Bar again. Moving the cursor away from the bottom of the screen will cause the Task bar to hide again.

Click on **Start | Settings | Control Panel**. The Control Panel displays icons used to access control setting.

2-3-2 Keyboard Setting

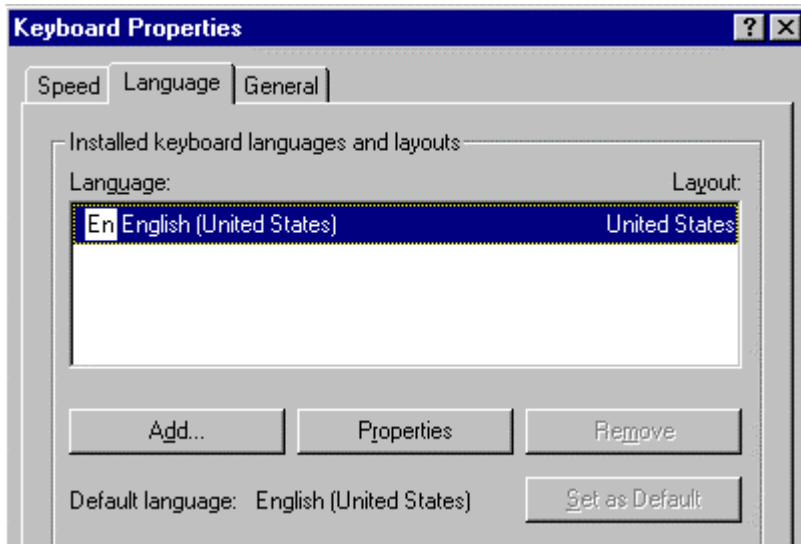
Caution

The default configuration for the keyboard is English. There is no need to complete this section unless you are using a keyboard other than English.



1. Find the Icon “Keyboard”, then double click it with the left mouse button.

Keyboard



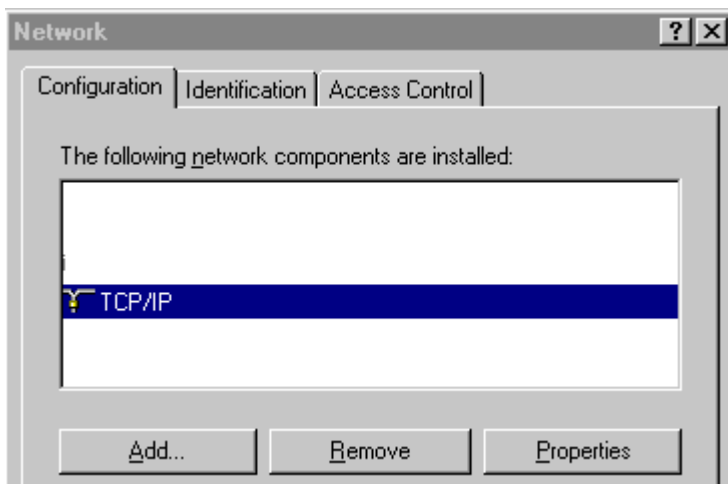
2. Choose the “Language” tab. To change the default language, select the **[Add]** button. A pop-up box will give a selection of countries to choose from. Select desired country for the keyboard being used on the system you are loading. Then select the **[OK]** button, then the **[Apply]** button at the bottom of the Properties box. Windows will need to reboot for changes to take affect.

2-3-3 Network Configuration

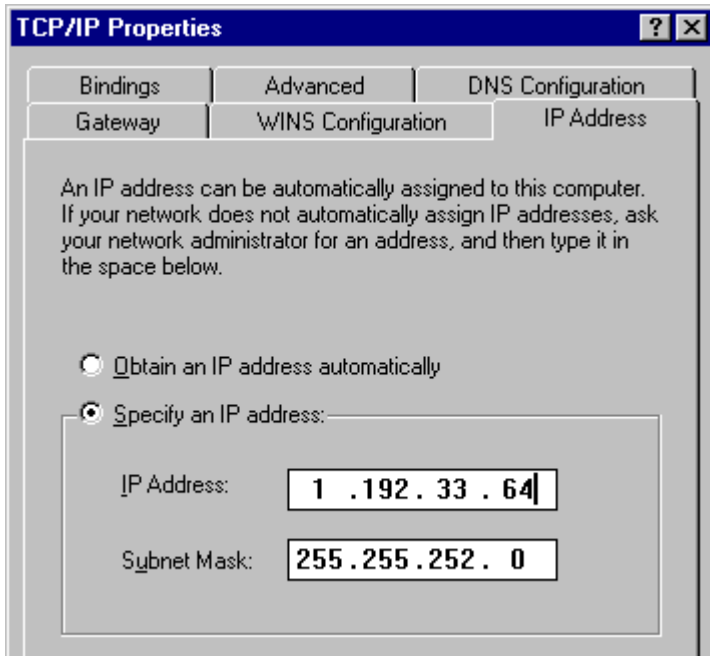


1. Locate and open the **[Network]** icon by double clicking with the left mouse button.

Network



2. At the main Network box, select the “**TCP/IP - 3Com.....**” entry and select the **[Properties]** button.



Note: Use the IP Address and Subnet Mask provided by your network administrator or recorded in Appendix A.

3. Select the **[IP Address]** tab. Make sure the "Specify an IP Address" is selected. Enter the IP address that will be used for the system PC. For Subnet Mask enter; **255.255.255.0** (or site Netmask) . Select the **[OK]** button at the bottom of the "Properties" page, then the **[OK]** button at the bottom of the "Network" page. Close Control Panel by clicking on the **X** in the upper right corner of the window. Select **[YES]** to reboot the PC for changes to take effect.

2-3-4 LCD Screen Resolution

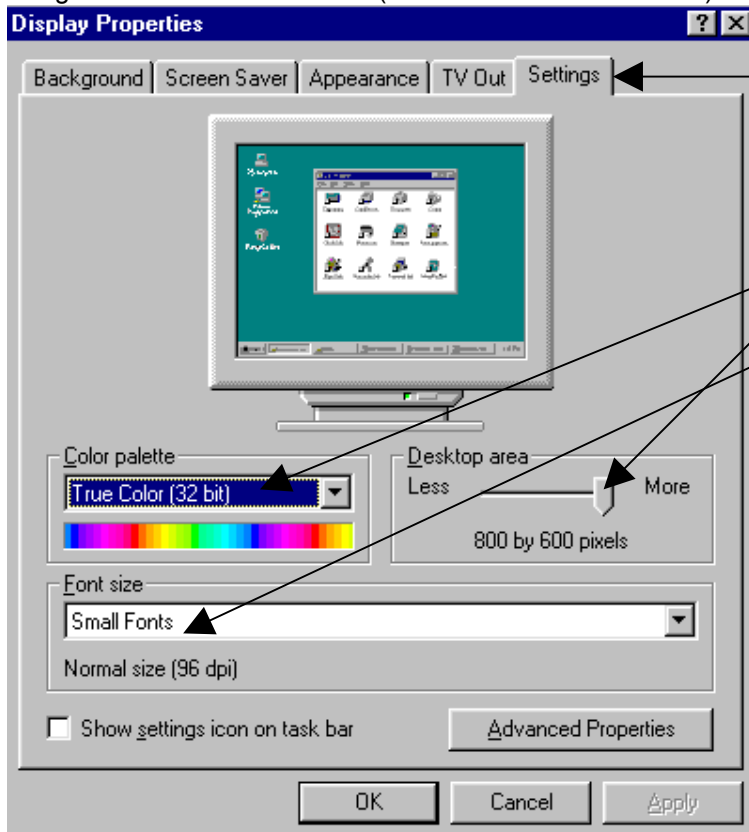
Note
Only do this procedure if the LCD PC display is a Panoview 600 model.

Two types of LCD PC display devices are currently being used. The older model is Nview and the latest model is Panoview 600. For the Nview, the default resolution of 640 by 480 is the highest possible setting. So, no resolution adjustments are made to the Nview LCD. If the system being loaded contains a Panoview 600, do the following to adjust the screen resolution:

1. Open the system Control Panel by clicking on the **[Start]** button, then **[Settings]**, then **[Control Panel]**.
1. Find the "Display" Icon and double click it.



Figure 1A: STB Video driver (new Panoview 600 monitor)



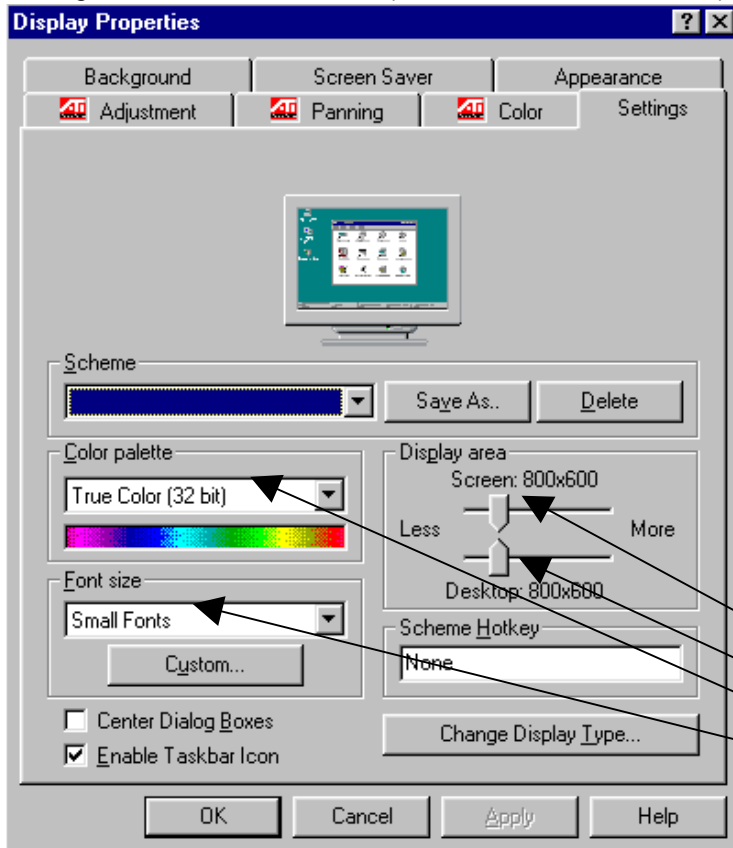
3. On the next screen, select the **[Settings]** tab. The screen will look like one of the following two screen shots. Set the following settings:

If your screen looks like the Figure 1A do the following:

- Color Palette to "True Color (32 bit)"
- Desktop Area to "800 x 600"
- Font Size to "Small Fonts"

Select the **[OK]** button at the bottom of the screen. When asked to configure the monitor, select **[YES]**. Select **[Standard Monitor Types]** on the left side of the screen and **[Super VGA 800 x 600]** on the right side of the screen. Click on **[OK]** twice. The computer tests the configuration and asks "Would you like to Restart the computer with the new settings?" Click on **[OK]**; the computer will restart. When Windows 95 restarts, you can close the control panel by clicking on the **X** in the upper right corner of the window.

Figure 1B: ATI Video driver (New Panoview 600 Monitor)



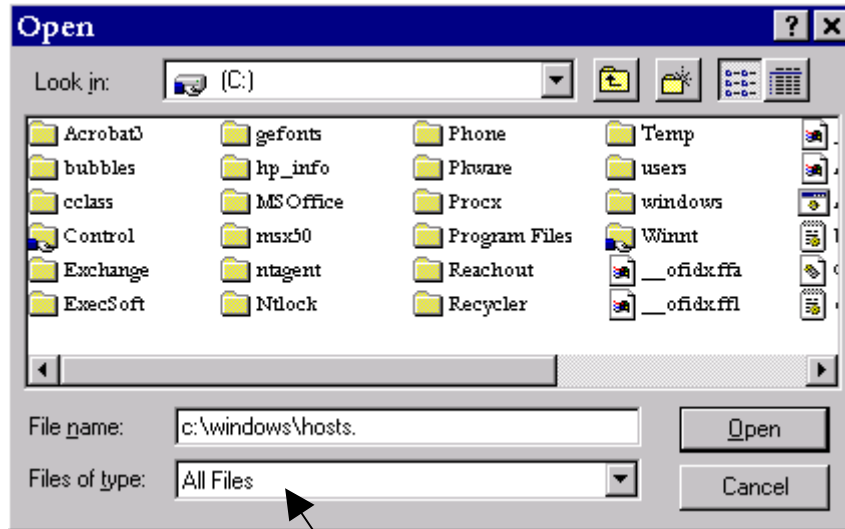
If your screen looks like the Figure 1B do the following:

Click on the **[Change Display Type]** button. Click on the **[Change]** button by Monitor Type. Select **[Standard Monitor Types]** on the left side of the screen and **[Super VGA 800 x 600]** on the right side of the screen. Click on **[OK]**. Click on **[Close]** to the Change Display Type window. Now change the Display Area to 800 x 600. Click on **[OK]** to the Display Properties window. Click on **[OK]**. The computer will test the configuration and ask the user "Do you want to keep these settings?" Click on **[YES]** and close control panel by clicking on the **X** in the upper right corner of the window.

- Screen Area to "800 x 600"
- Desktop Area to "800 x 600"
- Color Palette to "True Color (32 bit)"
- Font Size to "Small Fonts"

2-3-5 Setting PC Local Host File

To configure the local network host file select the Task Bar **[Start]** button. Move up and select **“Programs”** then **“Accessories”** then over to **“NotePad”**. The NotePad text editor will start. In NotePad, select **[File]** then **[Open]**.



Change the **“File of type”** box to **“All Files(*.*)”**.

In the **“File Name”** box type:

c:\windows\hosts.

Note: The period after c:\windows\hosts **MUST** be included in the **“File Name”** box.

The host file will now open. Add the following new entries at the bottom of the host file.

x.x.x.x	OPBOX_PC	(X's should be replaced with the IP Address of this PC)
x.x.x.x	lx-mr	(X's should be replaced with the IP Address of the SGI Host)

In NotePad, select **“File”** then **“Save”** and **“File”** then **“Exit”** Note Pad.

2-3-6 Setting Language for WaveTime and Service Key Tools.

The Wavetime tool which is used to keep track of scan times as well as patient gating information and the Service Key dialog box, are multi-language application. The Service Key application also allows messages and information to be set. The default base language for the PC tools is English. It will not be necessary to complete this task unless some other language is desired. If English is the desired language, then proceed to **“Setting Messages In Service Key Dialog Box”**

Setting Wavetime base language

1. Go to Windows 95 task bar and select the **[Start]** button.
2. Select **“Programs” then “GE Medical Systems”**, then **“Set Language”** option. The “Main Menu” program is displayed:

```

Main Menu
(L)anguage for Wavetime and Skey
(E)dit Skey Text Message
(Q)uit program
    
```

3. Type: **L <Enter>** to set the base language for the applications. The “Language Menu” is displayed:

```

Language Menu
(E)nglish
(F)rench
(G)erman
(I)talian
S(P)anish
(S)wedish
(R)eturn to Main Menu
    
```

4. Select the letter of the language desired for the system being configured.
Example: **e <Enter>** (This would set English as the primary language.)
5. The program then prompts for verification of the selection.
“You have selected <language chosen> language [Y/N]”
6. If correct type: **y <Enter>** to except the change or **n <Enter>** to return to the selection menu.

Setting Messages In Service Key Dialog Box

The Service Key dialog box contains a message field that can be set to reflect the needs of the site. If no changes are desired, this section can be skipped. Do the following to set messages:

1. If not already in the “Set Language” menu, go to Windows 95 task bar and select the **[Start]** button.
2. Select **“Programs” then “GE Medical Systems”**, then **“Set Language”** option. The “Main Menu” is displayed:

```

Main Menu
(L)anguage for Wavetime and Skey
(E)dit Skey Text Message
(Q)uit program
    
```

3. Type: **E <Enter>** to set the base language for the service key messages. The “Language Menu” is displayed:

Language Menu

- (E)nglish
- (F)rench
- (G)erman
- (I)talian
- S(P)anish
- (S)wedish
- (R)eturn to Main Menu

4. Select the letter of the language desired for the Service Key message box.
Example: **E <Enter>** (This would set English as the primary language.)
5. The program then prompts for verification of the selection:
"You have selected <language chosen> language [Y/N]"
6. If correct type: **y <Enter>** to except the change or **n <Enter>** to return to the selection menu.

Five lines of message are available at 30 characters for the Service Key Message box. All lines can be updated with a message or select lines can be updated or changed as desired. The message edit menu is presented as follows:

Message edit Menu

- (1) Edit Message Line 1
- (2) Edit Message Line 1
- (3) Edit Message Line 1
- (4) Edit Message Line 1
- (5) Edit Message Line 1
- (R) Return to Main Menu
- (S) Save and Return to Main Menu

1. To change a message line type the following on the input field: **1 <Enter>**
2. Type your message up to 30 characters including spaces and then the **<Enter>** key.
3. Repeat this process for all five lines or only the lines that need updating. When finished updating, type **S <Enter>** to save changes and return to the main menu. Or type **R <Enter>** to go to the main menu without making any changes.

4. At the main menu,

- Main Menu
- (L)anguage for Wavetime and Skey
- (E)dit Skey Text Message
- (Q)uit program

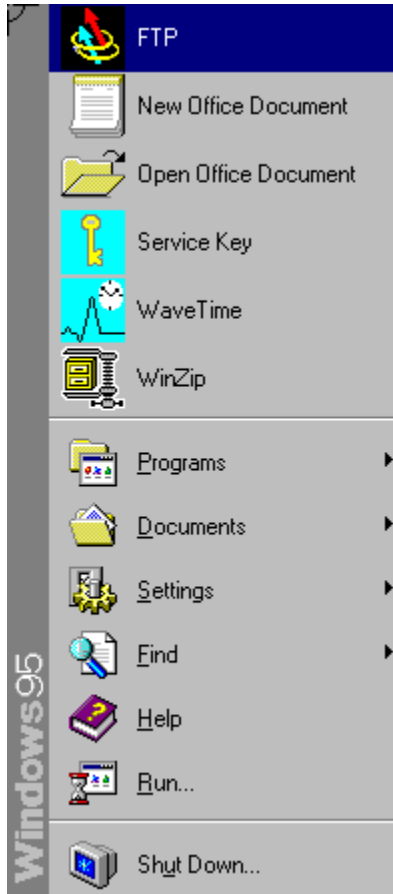
type **Q <Enter>** to exit.

Close the DOS window by typing, **exit <Enter>** at the DOS prompt.

2-4 WS-FTP95 PRO (FTP Tool)

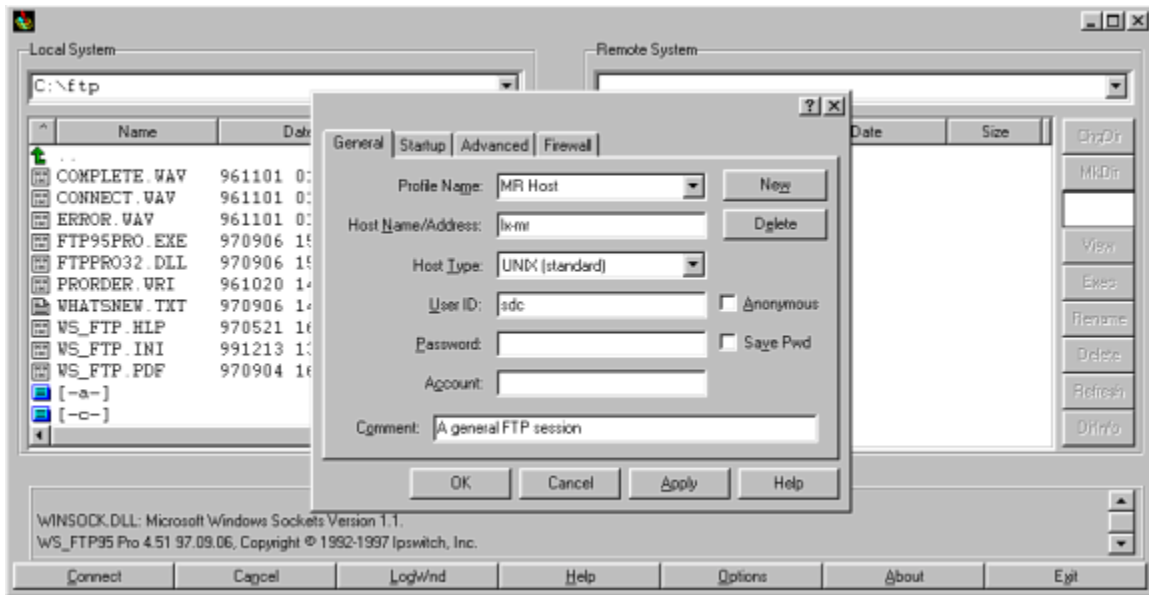
The standard PC load comes configured with a FTP tool to make file transfers between the system PC and the host computer easier to do. The tool can be used to transfer images, raw data, test files or any other text or binary files to or from either computer.

To start the tool, select on the task bar, the [Start] button then scroll to ftp. See Illustration 2-4-1.



STARTING THE FTP TOOL
ILLUSTRATION 2-4-1

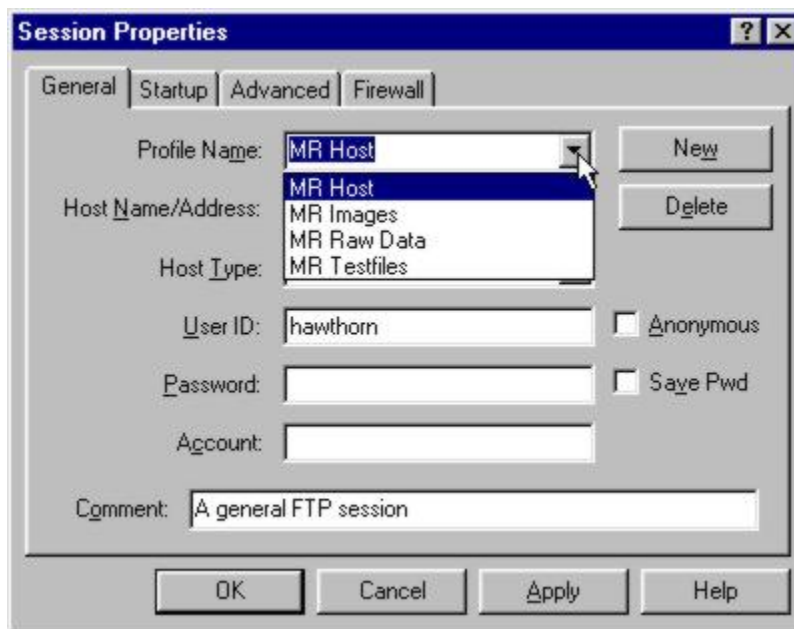
The tool comes pre-configured for usual transfers made between the computers. See Illustration 2-4-2.



INITIAL STARTUP OF THE FTP TOOL
ILLUSTRATION 2-4-2

Use of this tool as configured assumes the PC's host file has been updated with the host IP address. Refer to section 2-3-5 of this document for updating the host file if needed.

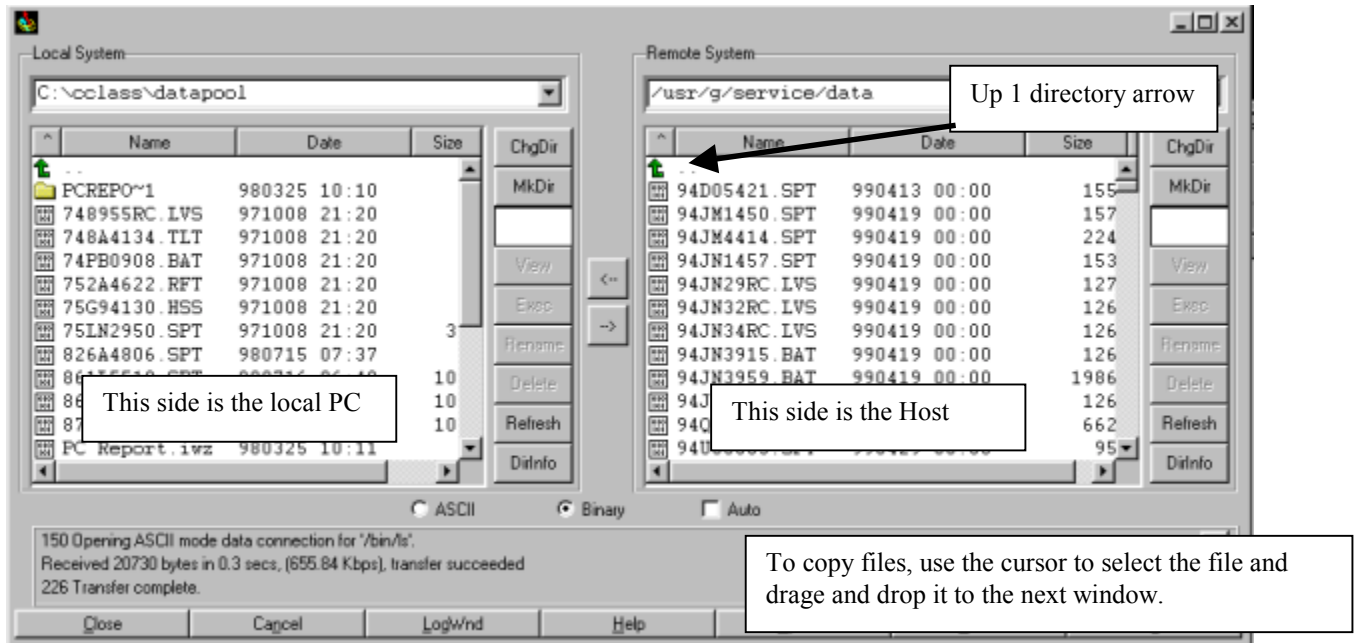
Several locations have been pre-loaded into the FTP tool. See illustration 2-4-3.



SESSION SELECTION
ILLUSTRATION 2-4-3

To transfer files from the host to the PC;

1. Select a session that would put you closest to the desired data.
2. Enter a User Name. The Default would be [sdc]. This is case sensitive, user lower case.
3. Enter the systems password. Signa default for sdc would be **adw2.0 <Enter>**.



THE FTP USER INTERFACE
ILLUSTRATION 2-4-4

For further discussion on the FTP tool itself and the how to's of using the tool, press the **[Help]** button at the bottom of the interface.

REVISION HISTORY

REV	DATE	AUTHOR	PRIMARY REASONS FOR CHANGE
0	July 8, 1998	Kebab	Initial version (removed from Host software install procedure).
1	Nov 17, 1998	R Hawthorne	Added 2192746-2 Install instructions
2	Dec. 10, 1998	S. Davis	Corrected errors in 1-4A.
3	Dec. 14, 1999	R. Hawthorne	Added sub-section 2-4 to explain the use of the FTP tool loaded with the LFC and getting started information.
4	October 2000	Hawthorne	Added section 2-2-2 reloading the LX4PC.