

# TABLE OF CONTENTS

Table of Contents .....	1
1.Overview .....	2
2.Preparation .....	2
3.Procedure.....	3
4.Restoration .....	7



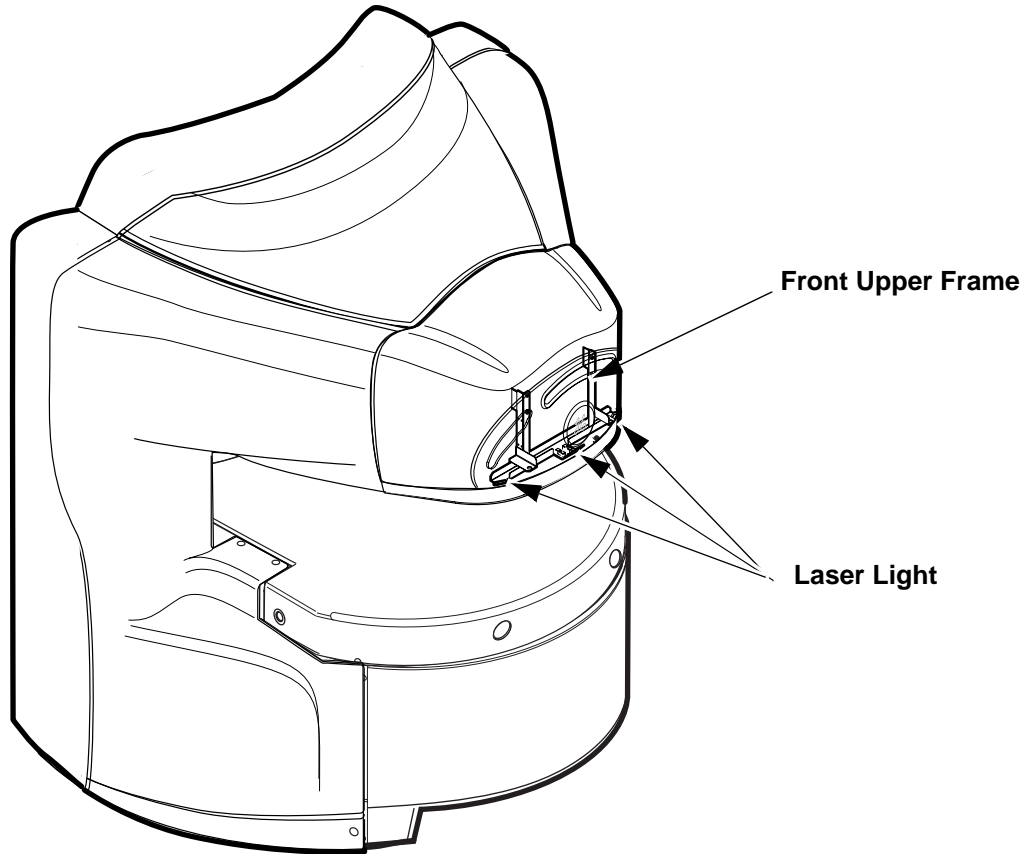
**FERROUS MATERIAL HAZARD! THE CRIMP TOOL, AND OTHER TOOLS AND PARTS REQUIRED FOR THIS INSTALLATION CONTAIN FERROUS MATERIAL AND WILL BE STRONGLY ATTRACTED TO MAGNET AND MAY BECOME DANGEROUS PROJECTILES. IF MAGNET IS AT FULL FIELD – KEEP ALL FERROUS TOOLS AT LEAST 10 FEET AWAY FROM THE MAGNET.**

Rev 2

**1. Overview**

This document describes Laser Light replacement located on front upper frame. After laser light installation, adjust laser light position.

**Laser Light Location:**



**2. Preparation**

Turn SSM Breaker OFF at Power Cabinet PDU.

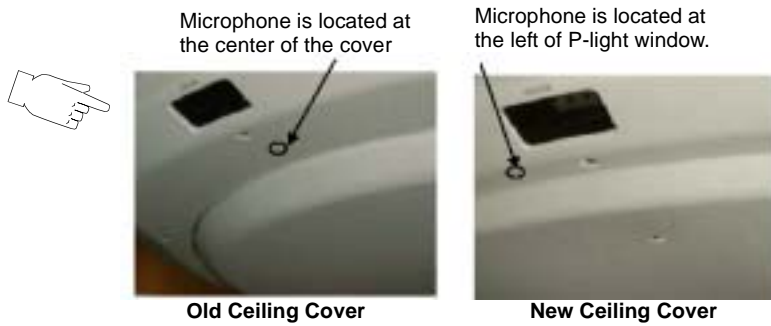
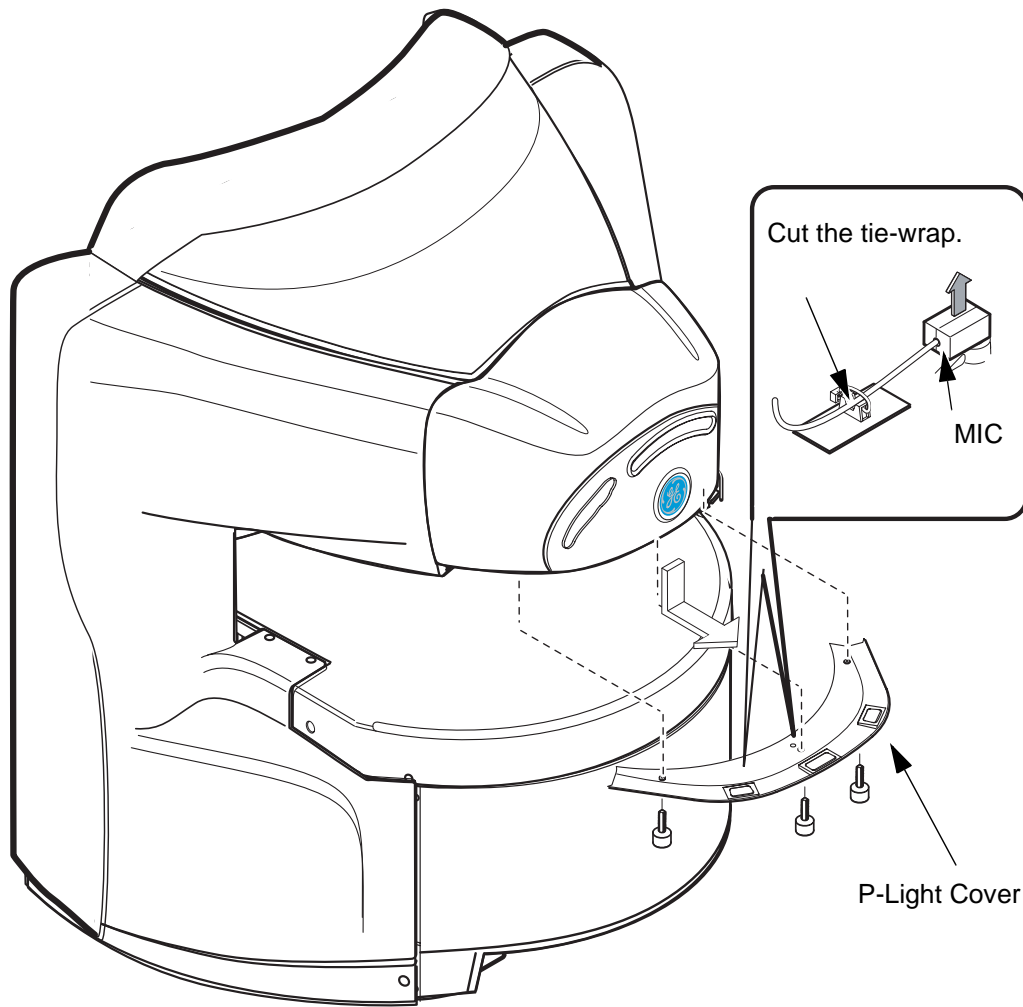
**Required Tool:**

Items	Qty	Type/Parts Number	Part
Laser Light Adjustment Jig	1	Non ferrous	Laser Light Position Adjustment
Metric Allen Wrench Set	1	Non ferrous	Covers
Nipper	1	Non ferrous	MIC of P-Light Cover
Tie-Wrap			MIC of P-Light Cover

Rev 2

**3. Procedure**

1. Remove P-light cover by removing 3 screws.
2. Cut the tie-wrap and remove the MIC from P-light cover.

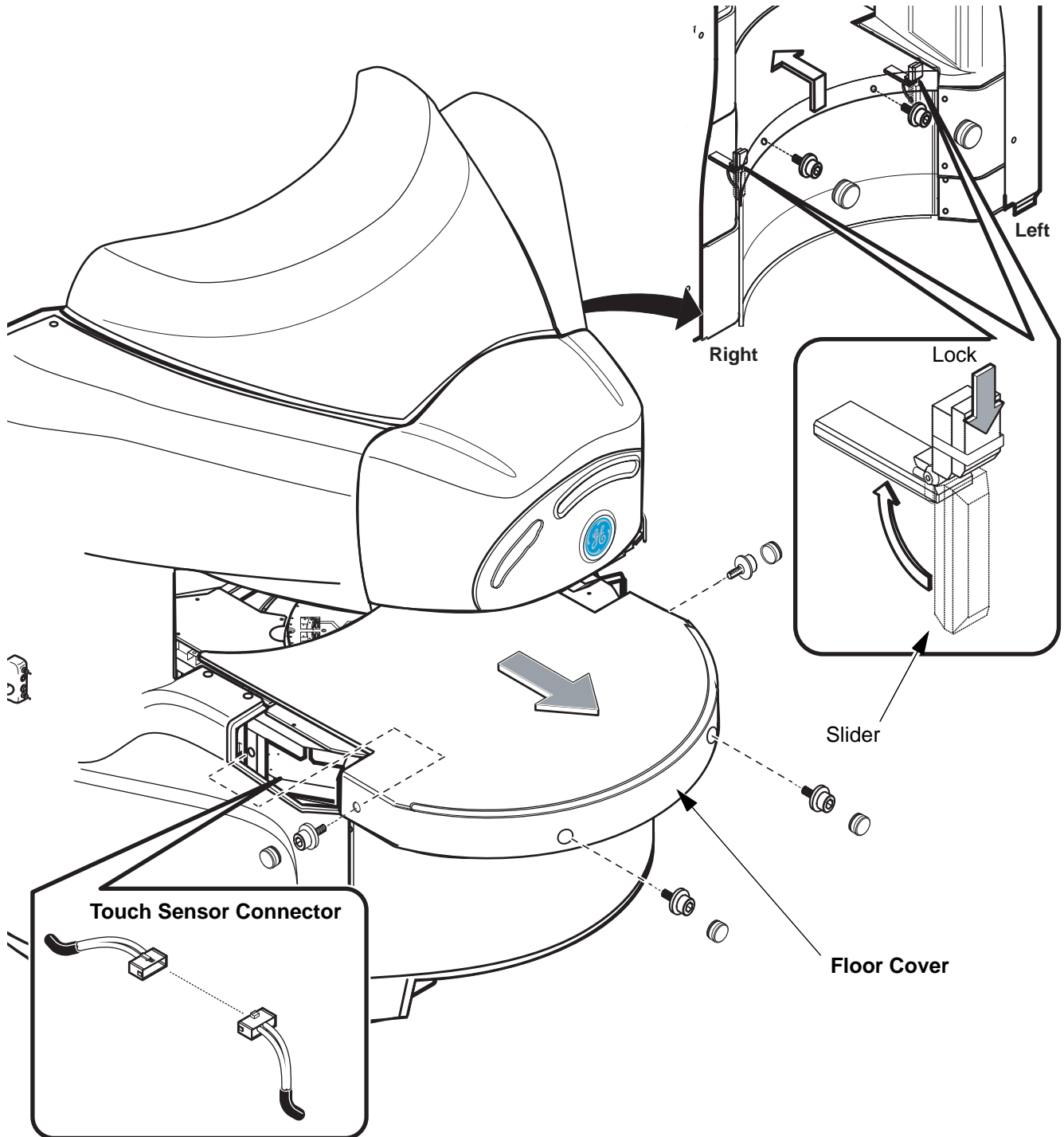


**LASER LIGHT REPLACEMENT  
ILLUSTRATION 1**

Rev 2

**3. Procedure(Continued)**

3. Remove 6 screws(U0438AA)/washers(2290515) and rubber caps.
4. Retract the slider of rear inner side of floor cover, and lock the slider for each side.
5. Slide floor cover to front side until touch sensor connector of front left side.
6. Disconnect the connector of touch sensor.
7. Remove floor cover.

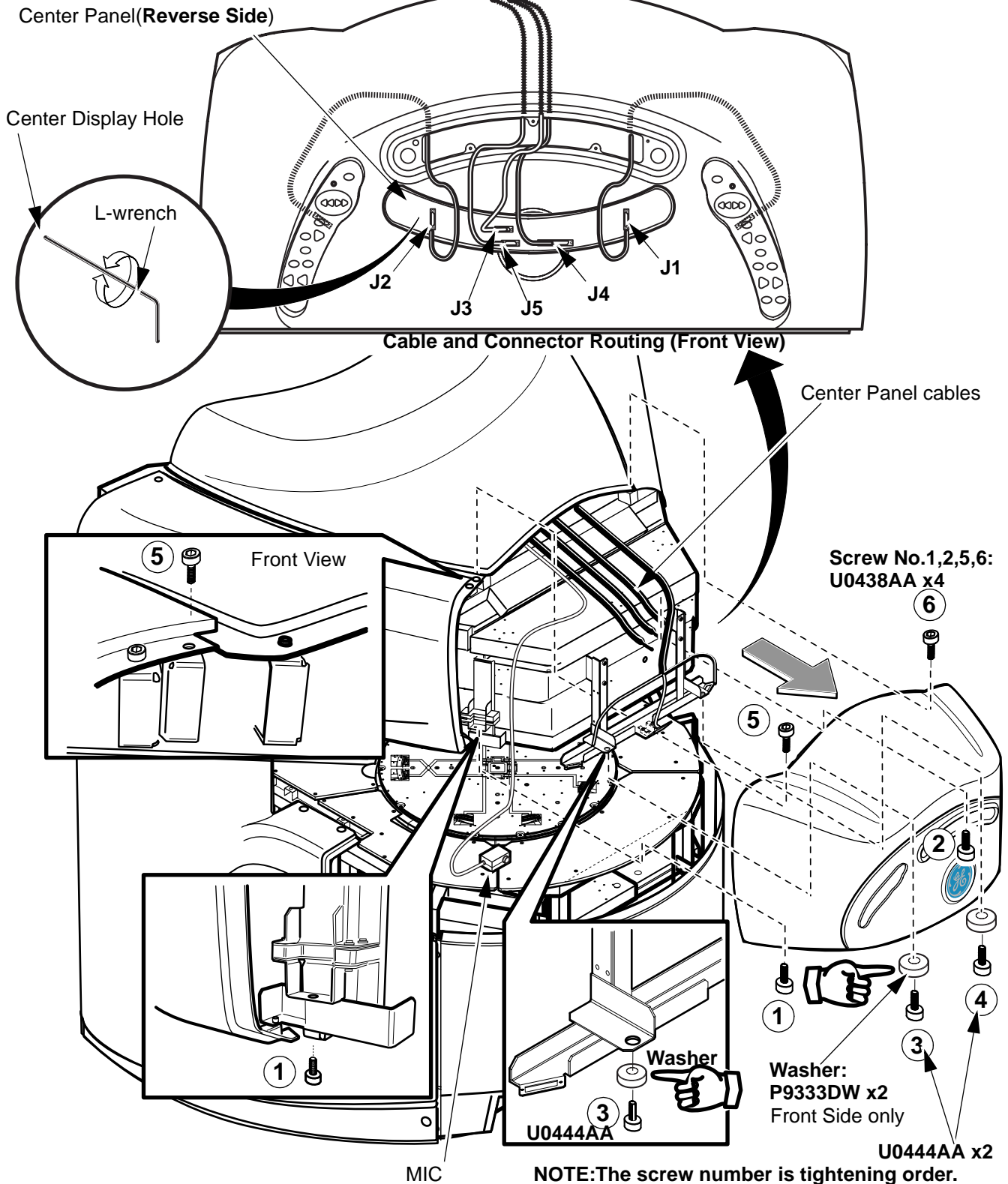


**LASER LIGHT REPLACEMENT  
ILLUSTRATION 2**

Rev 2

3. Procedure(Continued)

- 8. Remove center display from front cover using 3 mm L-wrench.
- 9. Disconnect all connectors from back panel of center display.
- 10. Remove front cover by removing 6 screws(U0438AA/U0444AA) and 2 washers(P9333DW).

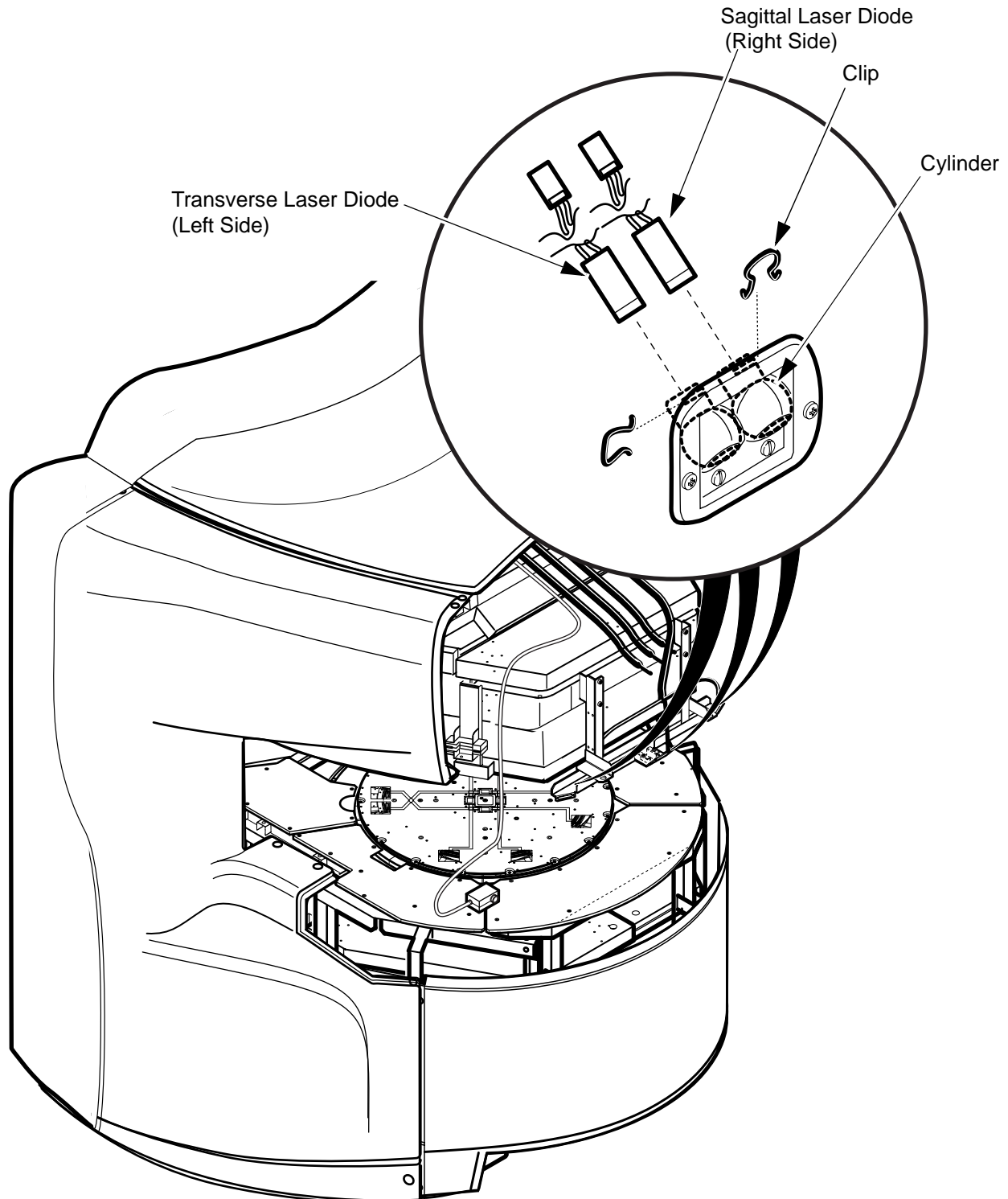


LASER LIGHT REPLACEMENT ILLUSTRATION 3

Rev 2

**3. Procedure(Continued)**

11. Disconnect connector of laser light.
12. Remove laser light by removing clip from laser light cylinder.
13. Install new laser light with clip.
14. After installed laser light, adjust laser light position. refer to alignment light adjustment in 7th and 8th day of installation flow.



**LASER LIGHT REPLACEMENT  
ILLUSTRATION 4**

Rev 2

#### **4. Restoration**

1. After laser light position adjustment, restore covers to reverse order of removal.

**Revision History**

<b>Rev</b>	<b>Date</b>	<b>Author</b>	<b>Primary Reasons For Change</b>
0	Oct. 03, 2001	K.Tsumagari	Initial Version
1	Jan 08, 2002	K.Tsumagari	Page 5: Washers are added to fixing screws of front cover.
2	Dec 07, 2002	Y.Masumo	Page 3: Added new ceiling cover information