

TABLE OF CONTENTS

Table of Contents 1
1.Overview 2
2.Preparation 2
3.Procedure..... 3
4.Restoration 5



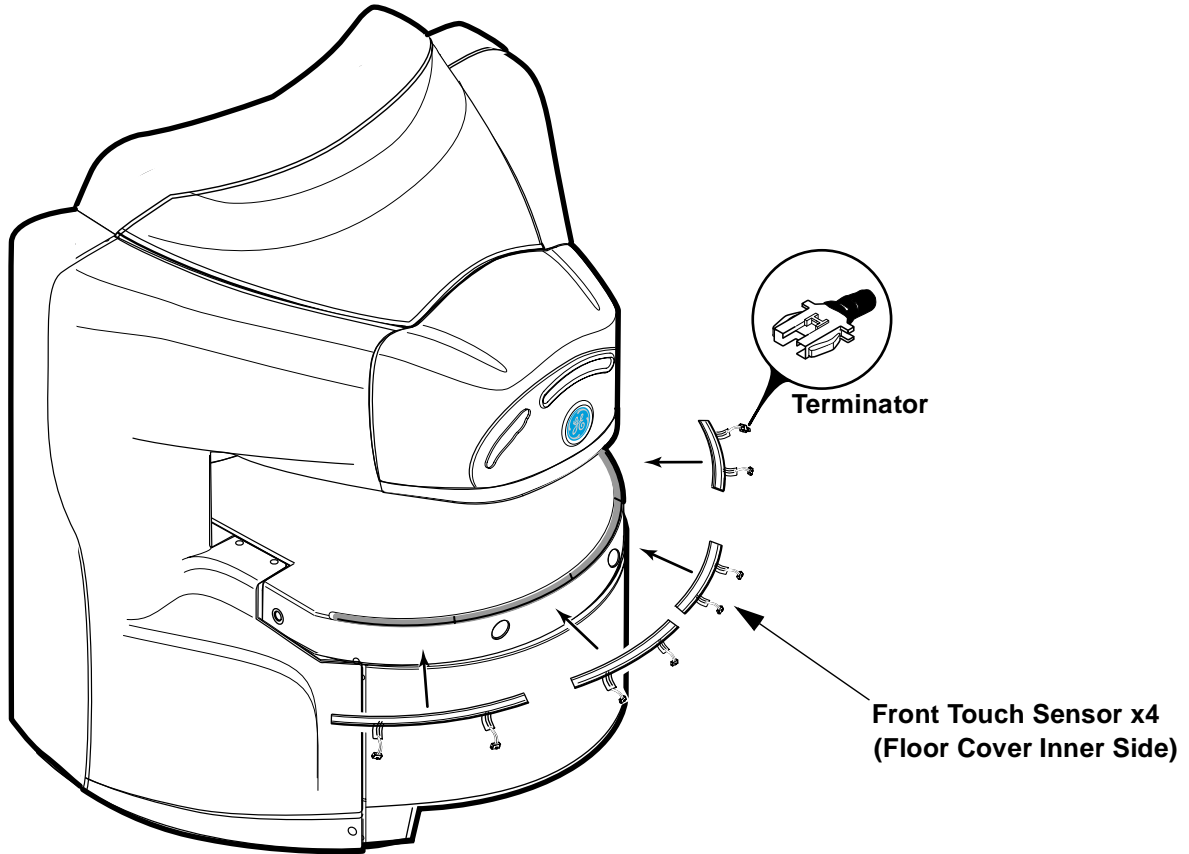
FERROUS MATERIAL HAZARD! THE CRIMP TOOL, AND OTHER TOOLS AND PARTS REQUIRED FOR THIS INSTALLATION CONTAIN FERROUS MATERIAL AND WILL BE STRONGLY ATTRACTED TO MAGNET AND MAY BECOME DANGEROUS PROJECTILES. IF MAGNET IS AT FULL FIELD – KEEP ALL FERROUS TOOLS AT LEAST 10 FEET AWAY FROM THE MAGNET.

Rev 0

1. Overview

This document describes front touch sensor replacement located in floor cover. Before replacing front touch sensor, perform troubleshooting of touch sensor.

Location:



2. Preparation

Turn SSM Breaker OFF at Power Cabinet PDU.

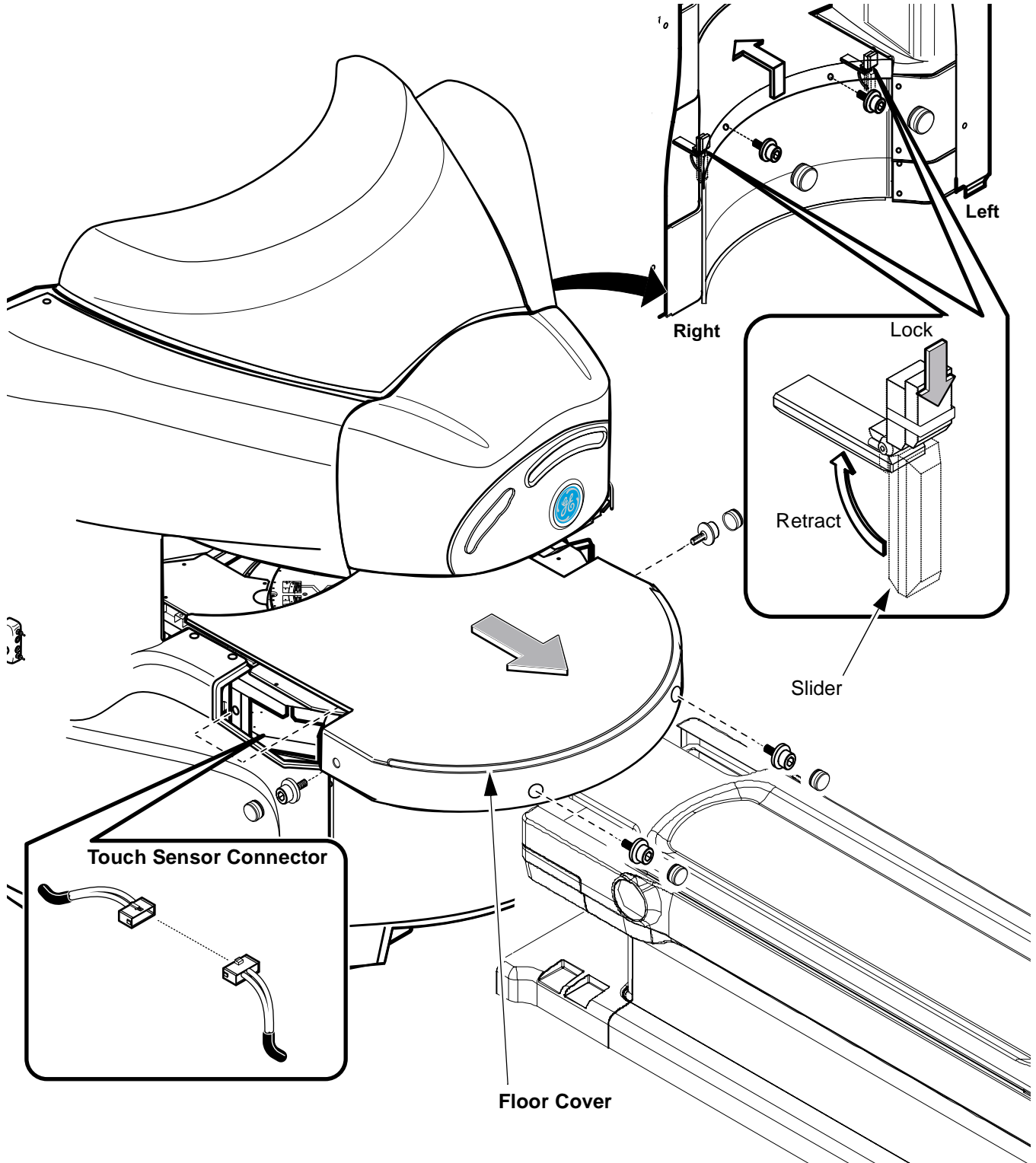
Required Tool:

| Items | Qty | Type/Parts Number | Part |
|-------------------------|-----|-------------------|--------------|
| Metric Allen Wrench Set | 1 | Non ferrous | Floor Cover |
| Nipper | 1 | Non ferrous | Touch Sensor |
| Tie-Wrap | | Small Size | Touch Sensor |

Rev 0

3. Procedure

1. Remove 6 screws(washers(2290515) and rubber caps.
2. Retract the slider of rear inner side of floor cover, and lock the slider for each side.
3. Slide floor cover to front side until touch sensor connector of front left side.
4. Disconnect the connector of touch sensor.
5. Remove floor cover.



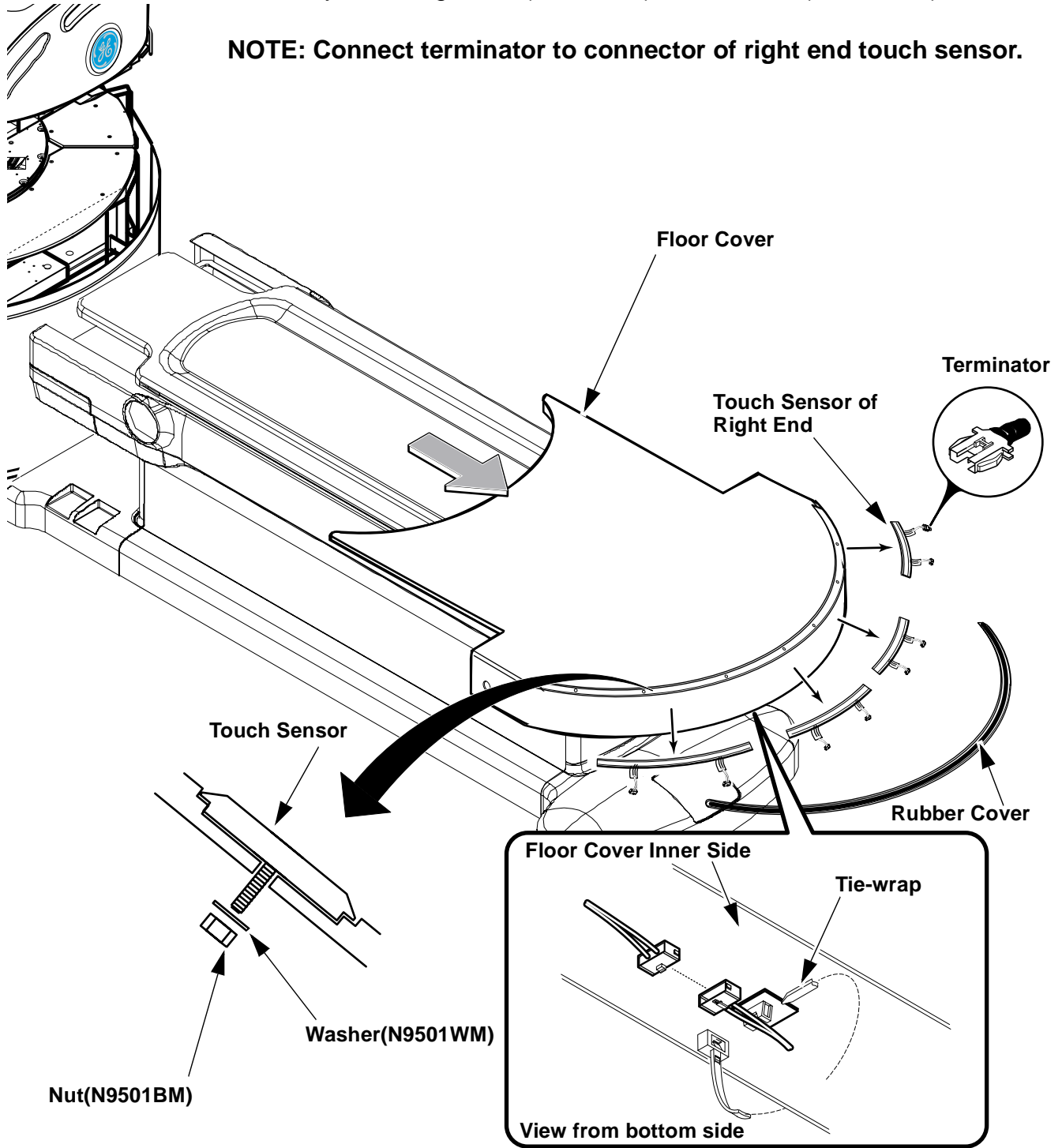
**FRONT TOUCH SENSOR REPLACEMENT
ILLUSTRATION 1**

Rev 0

3. Procedure(Continued)

- 6. Put floor cover to table end as illustration.
- 7. Peel rubber cover from floor cover.
- 8. Cut tie-wrap fixing touch sensor cable to inner side of floor cover.
- 9. Disconnect touch sensor connectors.
- 10. Remove touch sensor by removing 4 nuts(N9501BM) and washers(N9501WM).

NOTE: Connect terminator to connector of right end touch sensor.



**FRONT TOUCH SENSOR REPLACEMENT
ILLUSTRATION 2**

Rev 0

4. Restoration

1. Restore floor cover to reverse order of removal.
2. Turn SSM Breaker ON at Power Cabinet PDU.
3. Check that front touch sensor function is OK.

Rev 0

Revision History

| Rev | Date | Author | Primary Reasons For Change |
|------------|---------------|---------------|-----------------------------------|
| 0 | Oct. 03, 2001 | K.Tsumagari | Initial Version |
| | | | |