

# TABLE OF CONTENTS

<b>TABLE OF CONTENTS .....</b>	<b>1</b>
<b>DESCRIPTION.....</b>	<b>2</b>
<b>1- ACCESSING THE INTERCOM BOARD.....</b>	<b>2</b>
<b>2- KEYBOARD SPEAKER VOLUME.....</b>	<b>3</b>
2-1 Maximum Keyboard Speaker Volume.....	3
2-2 Minimum Keyboard Speaker Volume.....	4
<b>3- PATIENT SPEAKER VOLUME.....</b>	<b>4</b>
3-1 Minimum Patient Speaker Adjustment.....	4
<b>4- SYSTEM RESTORATION.....</b>	<b>5</b>
<b>REVISION HISTORY .....</b>	<b>6</b>

## DESCRIPTION

There are three volume adjustments for the Operator Workspace Keyboard Assembly: The intercom board provides additional volume adjustments:

- Keyboard speaker maximum volume
- Keyboard speaker minimum volume
- Patient speaker minimum volume



One of two models of the console intercom boards can be found in the system. 2117167-4 or 2204382. The model number can be found printed on the board itself. Insure you know what board you have before making adjustments.

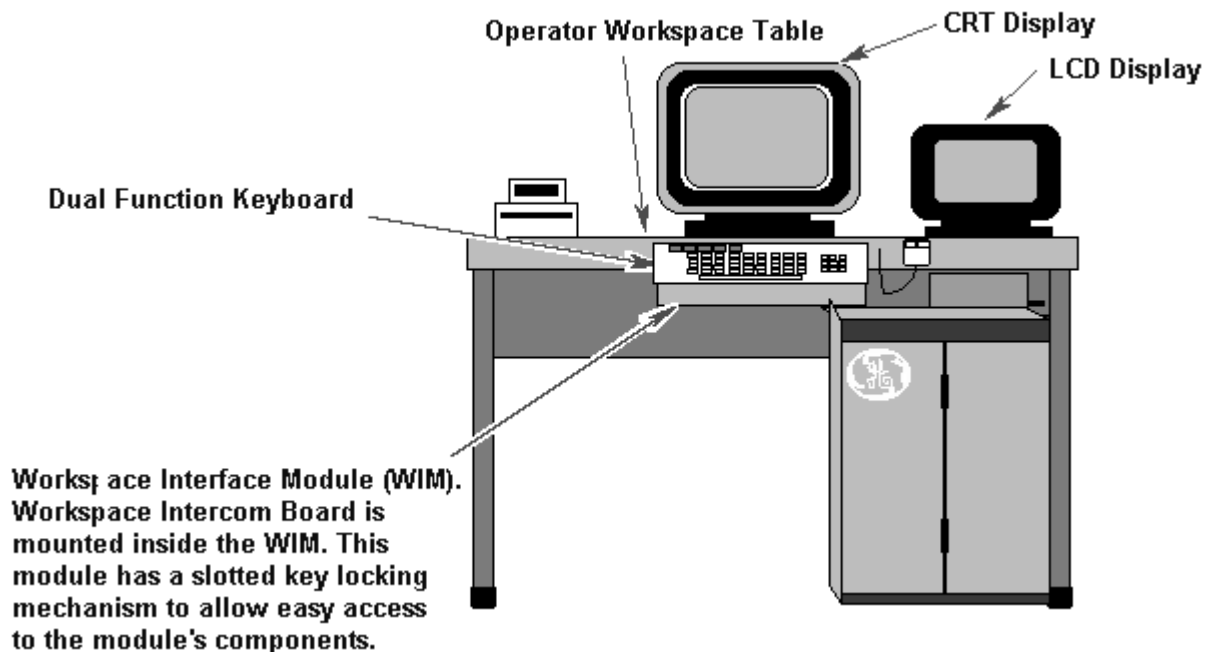


One of two models of the remote intercom can be found in the system. 46-264758g1 or 2204384. The model number can be found printed on the board itself. Insure you know what board you have before making adjustments.

(These procedures require two people to perform them.)

### 1- ACCESSING THE INTERCOM BOARD

Access the Intercom Board per Illustration 1-1.



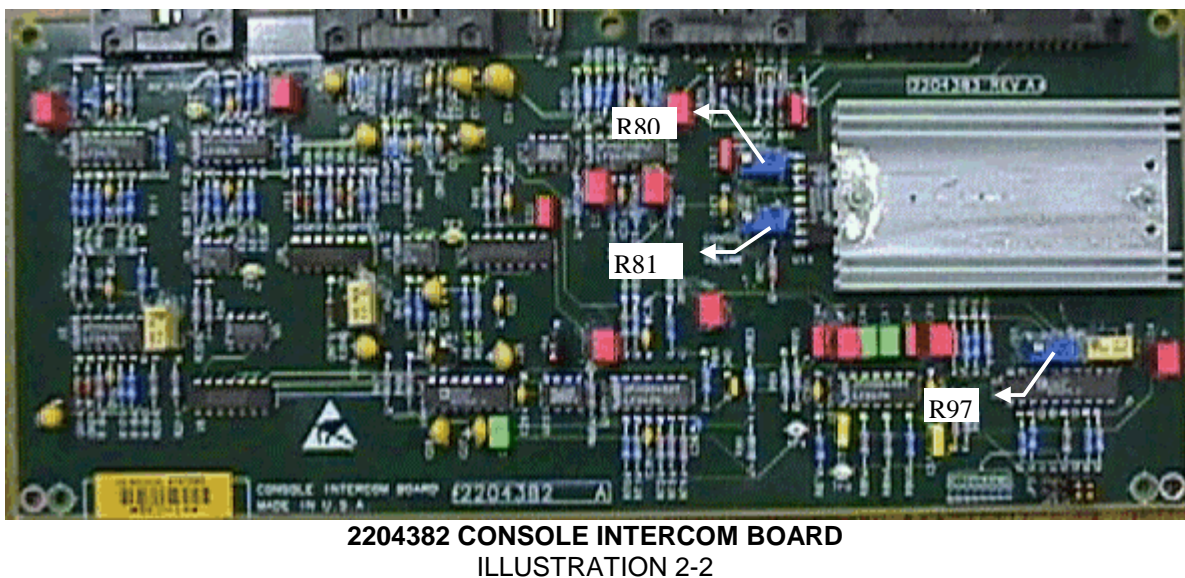
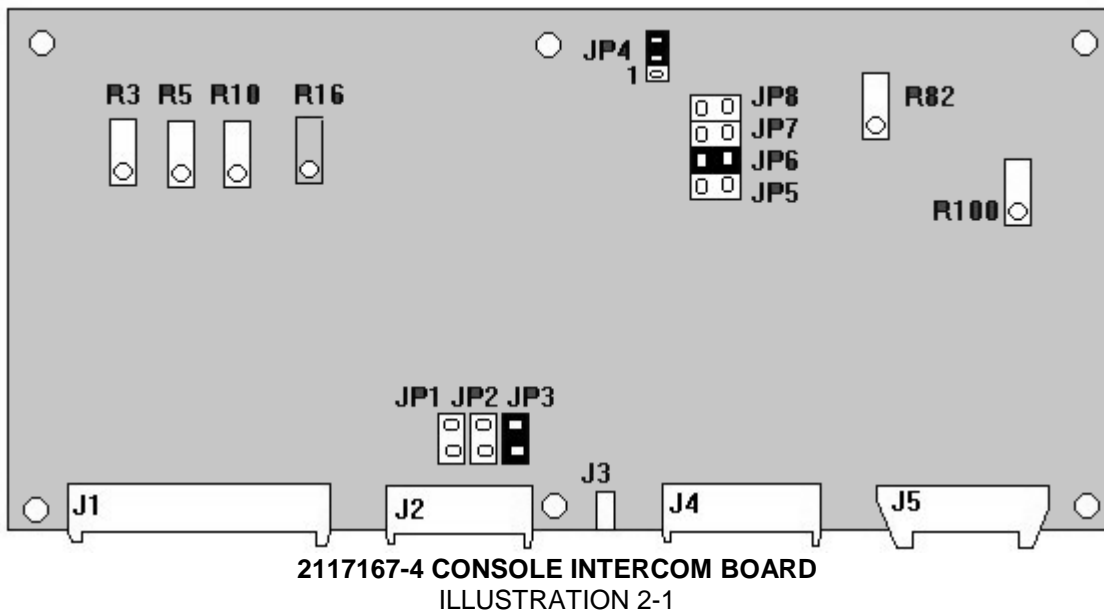
ACCESS THE INTERCOM BOARD  
ILLUSTRATION 1-1

## 2- KEYBOARD SPEAKER VOLUME

If the keyboard speaker volume control does not provide sufficient volume to enable patients to be adequately heard during scanning, increase the keyboard speaker volume.

### 2-1 Maximum Keyboard Speaker Volume

1. At the Operator Workspace Keyboard, set the keyboard speaker volume control at maximum by rotating the patient speaker volume knob clockwise.
2. One person talks into the patient microphone in the magnet bore. The second person adjusts R3 or R80 on the Intercom Board for the desired maximum volume at the keyboard speaker. See Illustration 2-1 for R3 location on 2117167-4; see Illustration 2-2 for R80 location on 2204382. (See Notes for direction to turn potentiometer.) Adjust R10 or R97 clockwise to increase maximum volume at the patient speaker.



**Note**

On the 2117167-4 console intercom board, R3 (keyboard speaker maximum volume) is factory set at approximately 11.5 turns clockwise. Turning R3 clockwise increases the maximum volume. (While turning the potentiometer, you will hear a faint clicking sound when it reaches the maximum or minimum limit.)

**Note**

On the 2204382 console intercom board, R80 (keyboard speaker maximum volume) is factory set at approximately 7.5 turns clockwise. Turning R80 clockwise increases the maximum volume. (While turning the potentiometer, you will hear a faint clicking sound when it reaches the maximum or minimum limit.)

**2-2 Minimum Keyboard Speaker Volume**

1. At the Operator Workspace Keyboard, set the keyboard speaker volume control at minimum by rotating the keyboard speaker volume knob counterclockwise. (This knob is located at the center side of the workspace keyboard.)
2. One person listens at the keyboard speaker. The other person talks into the patient microphone in the magnet bore and adjusts R10 or R97 on the Intercom Board for the desired minimum volume at the keyboard speaker. See Illustration 2-1 for R10 location on 2117167-4 or Illustration 2-2 for R97 location on 2204382 Adjust R10 or R97 counterclockwise to increase minimum volume at the keyboard speaker.

**Note**

On the 2117167-4 Console Intercom Board, R10 (keyboard speaker minimum volume) is factory set at approximately ten turns clockwise. Turning R10 counterclockwise increases the minimum volume. (While turning the potentiometer, you will hear a faint clicking sound when it reaches either the maximum or minimum limit.)

**Note**

On the 2204382 Console Intercom Board, R97 (keyboard speaker maximum volume) is factory set at approximately 5.5 turns counter clockwise. Turning R97 counter clockwise increases the minimum volume. (While turning the potentiometer, you will hear a faint clicking sound when it reaches either the maximum or minimum limit.)

**3- PATIENT SPEAKER VOLUME**

If the patient speaker volume control does not provide sufficient volume for patients to hear the operator during scanning, increase the patient speaker minimum volume.

**3-1 Minimum Patient Speaker Adjustment**

1. At the Operator Workspace Keyboard, set the patient speaker volume control at minimum by rotating the patient speaker volume knob counterclockwise. (This knob is located on the far side of the Operator Workspace keyboard.)

2. One person listens at the patient speaker. The other person talks into the keyboard microphone and adjusts R5 or R81 on the Intercom Board for the desired minimum volume at the patient speaker. You might notice that adjusting R5 or R81 **may** have some affect on the maximum volume at the patient speaker.

**Note**

On the 46-264758G1 Remote Intercom Board, R5 (patient speaker minimum volume) is factory set at approximately four turns clockwise. Turning R5 clockwise increases the minimum volume. (While turning the potentiometer, you will hear a faint clicking sound when it reaches the maximum or minimum limit.)

**Note**

On the 2204382 Console Intercom Board, R81 (patient speaker minimum volume) is factory set at approximately 7.5 turns clockwise. Turning R81 clockwise decreases the minimum volume. (While turning the potentiometer, you will hear a faint clicking sound when it reaches the maximum or minimum limit.)

#### **4- SYSTEM RESTORATION**

1. Close the Workspace Interface Module. Be sure that the module is completely sealed.
2. Perform a head and body scan to ensure system functionality.

### REVISION HISTORY

REV	DATE	AUTHOR	PRIMARY REASONS FOR CHANGE
A	August 8, 2000	R. Liu	Taken from 8x version