

Date: May 12,2003
To: Holders of DIRECTION 2275665
Subject: **DIRECTION 2275665**
Enclosed are the REV 6 update pages.

SUMMARY OF CHANGES

- P2-12: Added Note about YD Magnet Minimum hallway. P2-31: Added New Power cabinet minimum ceiling height.

UPDATE INSTRUCTIONS(This revision can only be inserted in Rev 5 manual);
To properly update your manual, perform the update instructions on the list below.

TAB	REMOVED PAGES	INSERTED PAGES
—	Title Page A to B	Title Page A to B
2	2-11 to 2-12 2-31 to 2-32	2-11 to 2-12 2-31 to 2-32

Yutaka Masumo

GEYMS TP GROUP-MR



GE Medical Systems

Technical Publications

Direction 2275665

Revision 6

Signa[®] Ovation Pre-Installation

Architectural/Installation Planning Use Only

Copyright 2000–2003 by General Electric Company

Operating Documentation



DAMAGE IN TRANSPORTATION

All packages should be closely examined at time of delivery. If damage is apparent, have notation of "bad order" placed by the delivering driver on all copies of freight or express bill. If damage is of a concealed nature, notify transportation agent as soon as possible to make an "inspection report of damage" but in any event not later than 15 days after delivery. A transportation company usually will not pay a claim for concealed damage if an inspection is not requested within this 15 day period. Complete instructions regarding claim procedure are found in section "S" of the Policy & Procedure Bulletins.

If shipment was handled by moving van service – uncrate – call Traffic – Milwaukee immediately when any damage is found. Do not attempt to call any local agent. At this time be ready to describe type of damage, type of equipment, serial numbers and if possible the order number.

The above paragraph is in regard to equipment requiring installation only, and does not apply to supply items. The F.O.B point for these items is as shown in the Price Book.



GE Medical Systems

GE Medical Systems: Telex 3797371
P.O. Box 414, Milwaukee, Wisconsin 53201 U.S.A.
(Asia, Pacific, Latin America, North America)

GE Medical Systems — Europe: Telex 698626
283, rue de la Minere, B.P.34, 78533 Buc Cedex
France

REVISION HISTORY

REV	DATE	PRIMARY REASON FOR CHANGE
0	Oct 11, 2000	Initial release
1	Dec 28, 2000	Product Name was changed to Signa Ovation. Added Cooling Cabinet Information. Miscellaneous Correction.
2	May 18, 2001	Update the Magnet Load Pattern. Miscellaneous Correction.
3	Oct 26, 2001	Added the Swing Table Style B ware plate location in Sec 2. Added MDP Document in Sec 11. Miscellaneous Correction.
4	Jan 18, 2002	Cable Interconnect List and Raceway description was updated according to the regulation.
5	Oct 28, 2002	Added YD Magnet (MFO3 M4 Magnet) Information. Miscellaneous Correction.
6	May 12, 2003	P2-12: Added Note about YD Magnet Minimum hallway. P2-31: Added New Power cabinet minimum ceiling height.

LIST OF EFFECTIVE PAGES

PAGE	REV	PAGE	REV	PAGE	REV	PAGE	REV	PAGE	REV
Title page	6	2-3 to 2-5	1	3-2	blank	6-2	blank	8-6 to 8-7	1
GE Logo page	-	2-6 to 2-8	5	3-3 to 3-4	1	6-3 to 6-6	1	8-8 to 8-17	5
Direction 15214	5	2-9 to 2-11	1	3-5 to 3-16	5	6-7	4	8-18	blank
a to b	1	2-12	6			6-8 to 6-9	1		
c	4	2-13	4			6-10 to 6-17	4		
d	blank	2-14	1			6-18	1		
A	6	2-15	5	SITE ENVIRON- MENT Tab 4				PREINSTALLA- TION CHECKLIST / TOOLS AND TEST EQUIPME- NT Tab 9	
B	blank	2-16 to 2-17	1	4-1 to 4-6	1				
i	1	2-18	5	4-7	5	RF SHIELD ROOM Tab 7			
ii	3	2-19	1	4-8 to 4-13	1	7-1	1	9-1	1
iii	1	2-20	2	4-14	4	7-2	blank	9-2	blank
iv	3	2-21	5	4-15	1	7-3 to 7-14	1	9-3 to 9-10	1
v to viii	1	2-22	3	4-16	5	7-15 to 7-16	5		
		2-23	5	4-17 to 4-22	1	7-17	1		
		2-24	3			7-18	5	SAFETY CON- SIDERATIONS Tab 10	
SYSTEM CONFIGURATION Tab 1		2-25 to 2-26	5	POWER RE- QUIREMENTS Tab 5		7-19	3	10-1	1
1-1	1	2-27 to 2-30	3	5-1	3	7-20	5	10-2	blank
1-2	blank	2-31	6	5-2	blank	7-21 to 7-30	1	10-3 to 10-5	1
1-3 to 1-7	1	2-32 to 2-36	3	5-3	1	7-31	5	10-6	blank
1-8 to 1-10	5	2-37	5	5-4 to 5-5	5	7-32 to 7-34	1		
1-11	1	2-38	3	5-6 to 5-8	1				
1-12	blank	2-39	5	5-9 to 5-18	3	SHIPPING AND DELIVERY DATA Tab 8		MAIN DISCON- NECT PANEL Tab 11	
		2-40 to 2-43	3			8-1	5	11-1	3
		2-44	5	INTERCONNECT DATA Tab 6		8-2	blank	11-2	blank
ROOM LAYOUTS Tab 2				6-1	1	8-3 to 8-4	1	11-3 to 11-28	3
2-1	1	MAGNETIC FIELD CONSIDER- ATIONS Tab 3				8-5	5		
2-2	blank	3-1	1						

2-5 MINIMUM DOOR/HALLWAY SIZES

Table 2-3 lists minimum actual clearance opening dimensions for doors and hallways required by Signa equipment. Installation or replacement of components listed in Table 2-4 must be taken into consideration when determining hallway and door dimensions. Clearance for maneuvering around corners or turns must also be taken into consideration. Refer to SECTION 8, SHIPPING AND DELIVERY DATA, for Signa Component shipping dimensions.

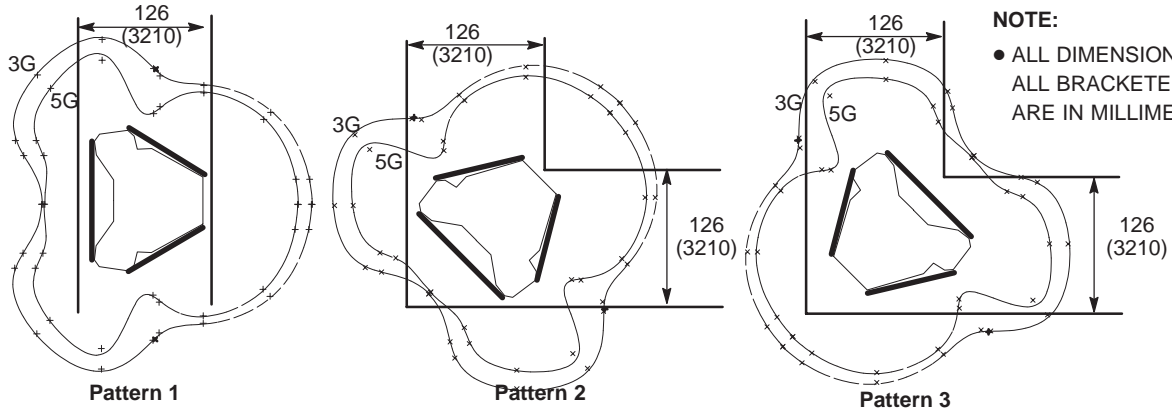
TABLE 2-3
MINIMUM HALLWAY/DOOR DIMENSIONS

COMPONENT	MINIMUM HALLWAY/ DOOR WIDTH* in. (mm)	MINIMUM HALLWAY/ DOOR HEIGHT* in. (mm)	COMMENTS
Operator Workspace Table	32 (813)	80 (2032)	
Equipment Cabinets	36 (914)	80 (2032)	
Magnet	Refer to Note 1	Refer to Note 2	Refer to Table 2-4 for uncrated magnet dimensions.
RF Room Door	Refer to Section 7, RF SHIELDED ROOM	Refer to Section 7, RF SHIELDED ROOM	
<p>Note * Minimum hallway and door dimensions are actual clearance openings. Width and height of rigging equipment is not included in above dimension.</p> <p>1 Minimum width depends on access route to removable panels of RF shielded room wall. For straight path (i.e. no bends or turns). It is recommended to allow 6 in. (153 mm) on both sides of magnet. Appropriate calculations must be performed if turns exist along proposed magnet delivery route. Illustration 2-6 shows dimensions for 90° turn.</p> <p>2 Absolute minimum height clearance is 87.54 in. (2222 mm). Final dimension is dependent on rigger equipment used, refer to SECTION 8, SHIPPING AND DELIVERY DATA.</p>			

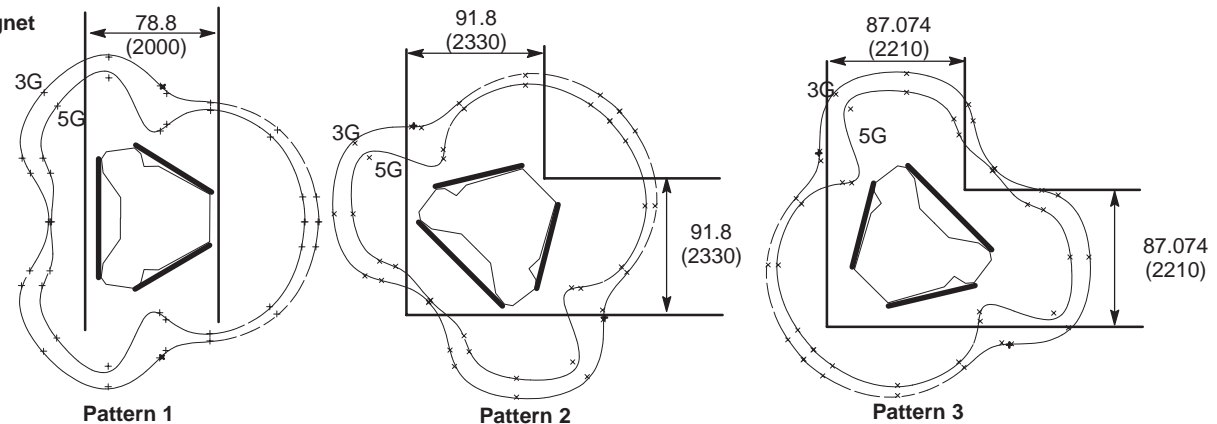
2-5 MINIMUM DOOR/HALLWAY SIZES (continued)

YD Magnet

NOTE: After the YD magnet has been jacked up, put on roller dollies and the jacks removed, same hallway size as a YC magnet (2000mm wide) may be used.



YC Magnet



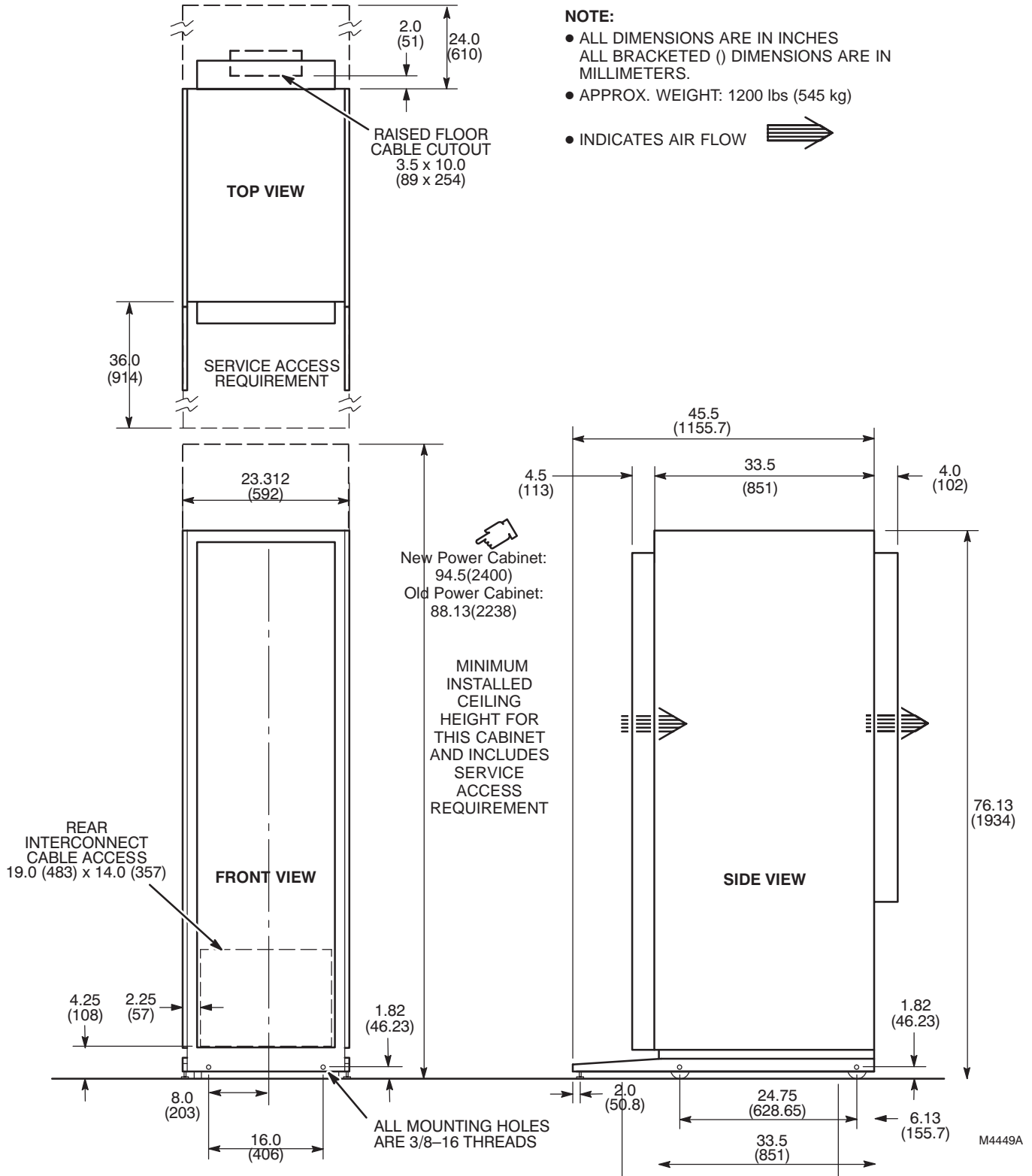
MAGNET MINIMUM DOOR/HALLWAY DIMENSIONS 90° TURN
ILLUSTRATION 2-6

Note

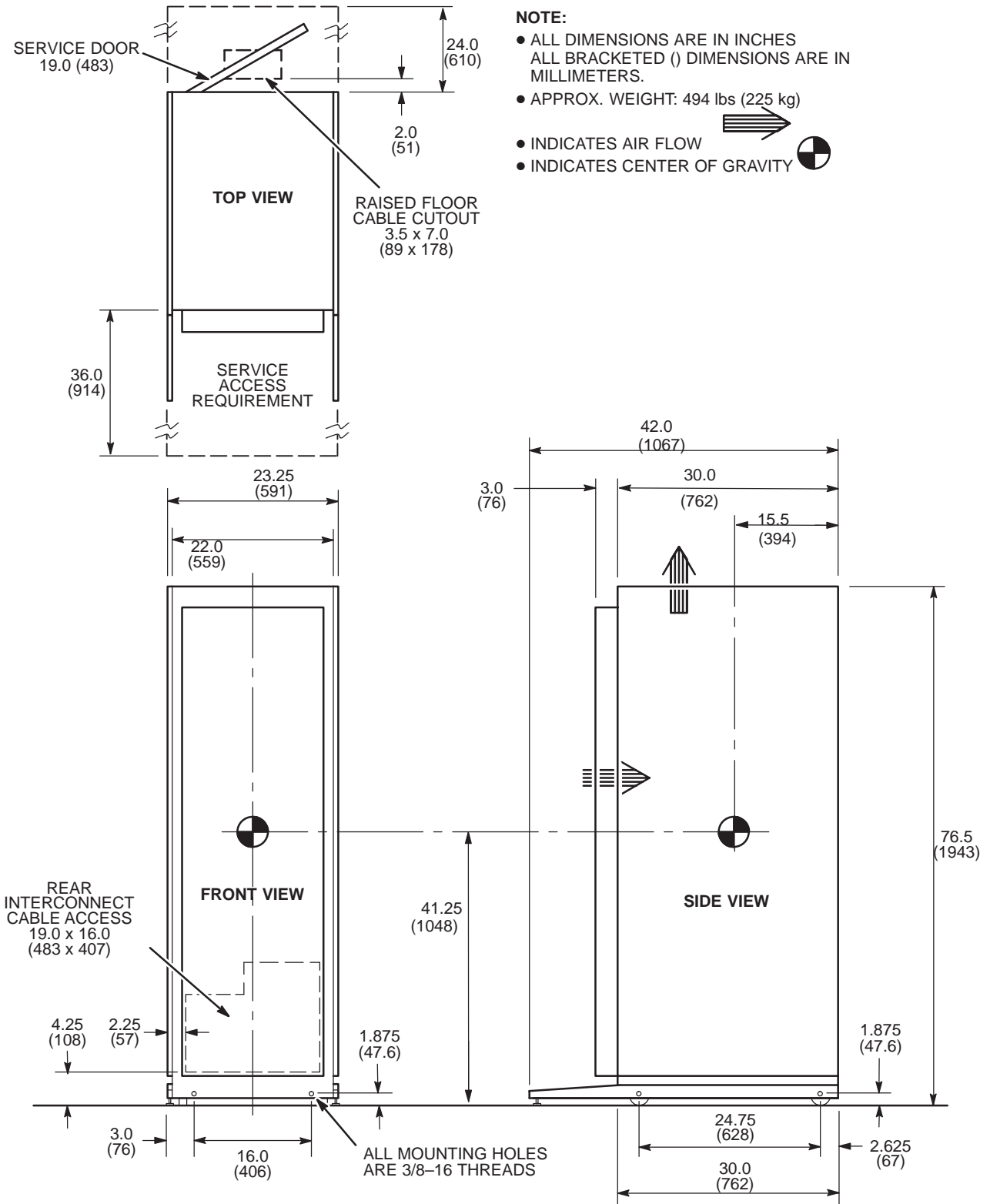
Since 5 Gauss line is out of the hallway, special care must be considered concerning the equipment near the hallway. Refer to Page 2-4 "TABLE 2-1 PROXIMITY LIMITS".

TABLE 2-4
COMPONENT DIMENSIONS FOR INSTALLATION/REPLACEMENT

COMPONENT	APPROXIMATE WEIGHT lbs (kg)	OVERALL DIMENSIONS Inches (mm)	COMMENTS
Magnet (uncrated)	Refer to comments.	Refer to comments.	Refer to Section 8, SHIPPING AND DELIVERY DATA, for dimensions, illustrations and weights.
Tx Coil	29.8 (13.5)	38.6(Φ980)	The RF Coil (upper & lower) are shipped separate from the magnet and installed at site.



POWER CABINET (MR1)
ILLUSTRATION 2-18



SYSTEM CABINET (MR2)

ILLUSTRATION 2-19