

# TABLE OF CONTENTS

TABLE OF CONTENTS.....	1
1-Overview .....	2
2- Procedure .....	2

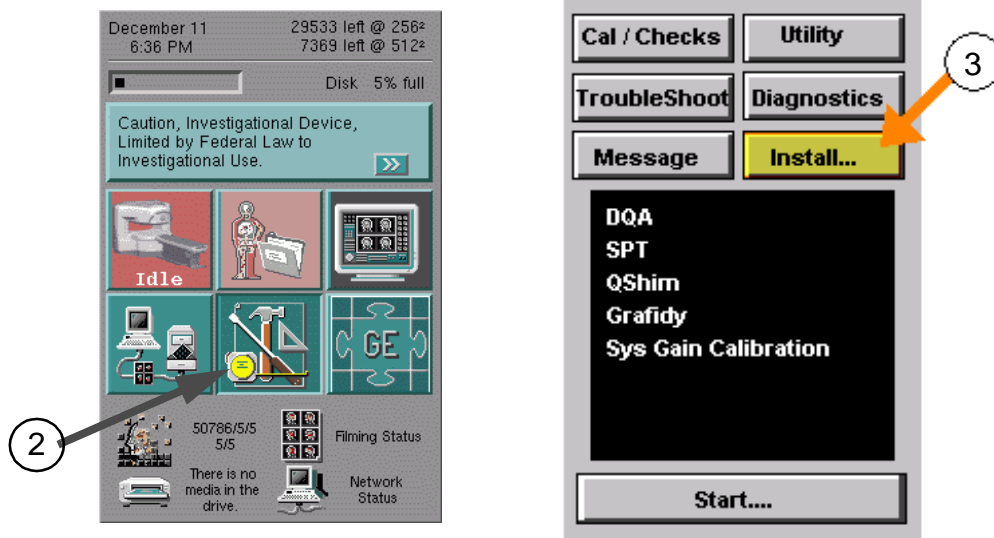
Rev 0

### 1. Overview

TCU setting definition file is not updated for Signa Ovation when installing the application software. Because of this reason, it is necessary to update the file.

### 2. Procedure

1. Verify that system is rebooted after Software Installation.
2. Select [**Service Desktop**] Icon.
3. Select [**Install...**].



**SERVICE DESKTOP**  
ILLUSTRATION 1

4. Type "**operator**" after Password and hit [**Return**] key.



**PASSWORD**  
ILLUSTRATION 2

Rev 0

**2. Procedure (continued)**

5. The following Screen is displayed. Click "Hardware Configure".

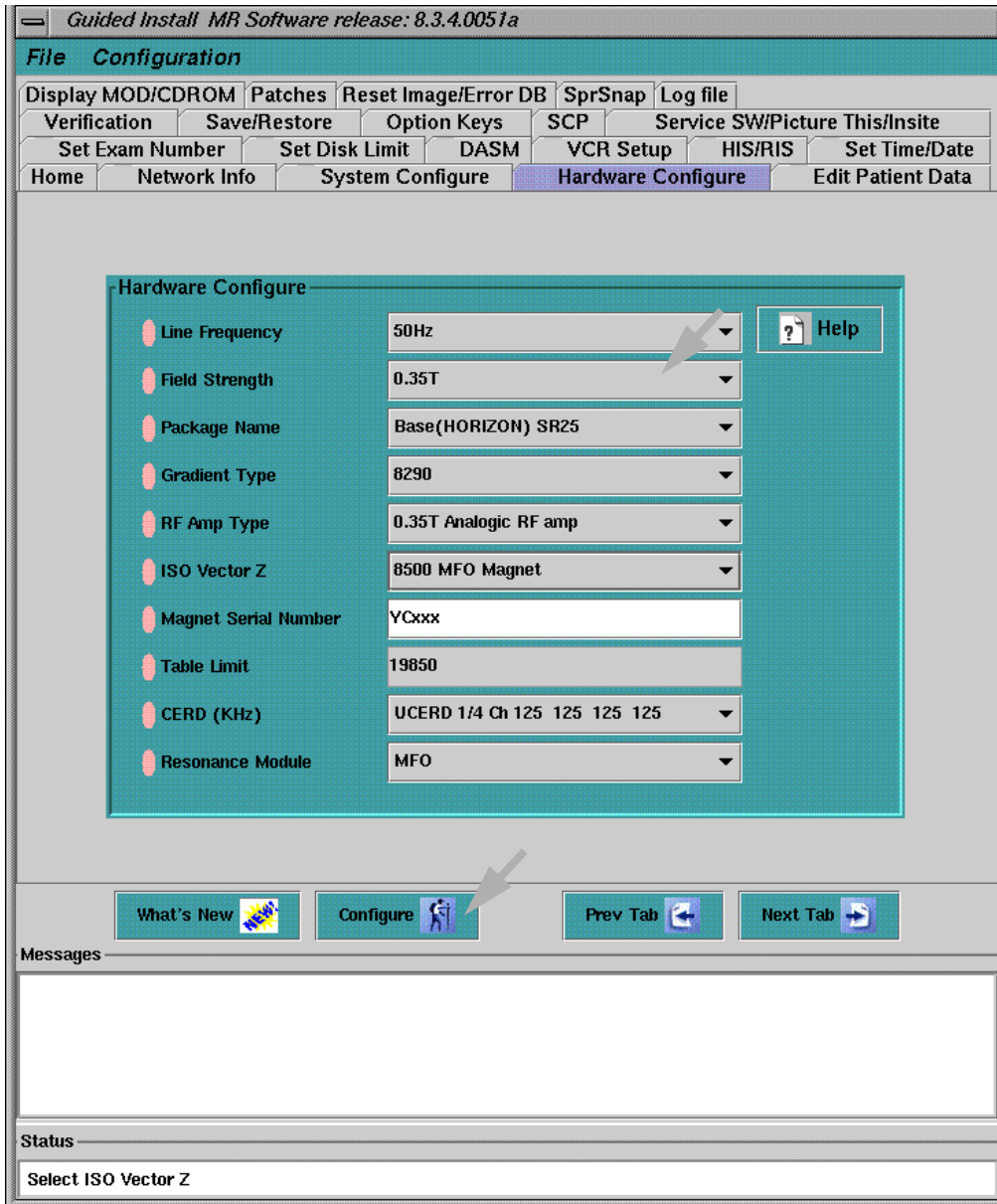


**INSTALL GUI  
ILLUSTRATION 3**

Rev 0

2. Procedure (continued)

- 6. Set the Field Strength to any value except 0.35T (e.g. 1.5T).
- 7. Click [Configure] button.

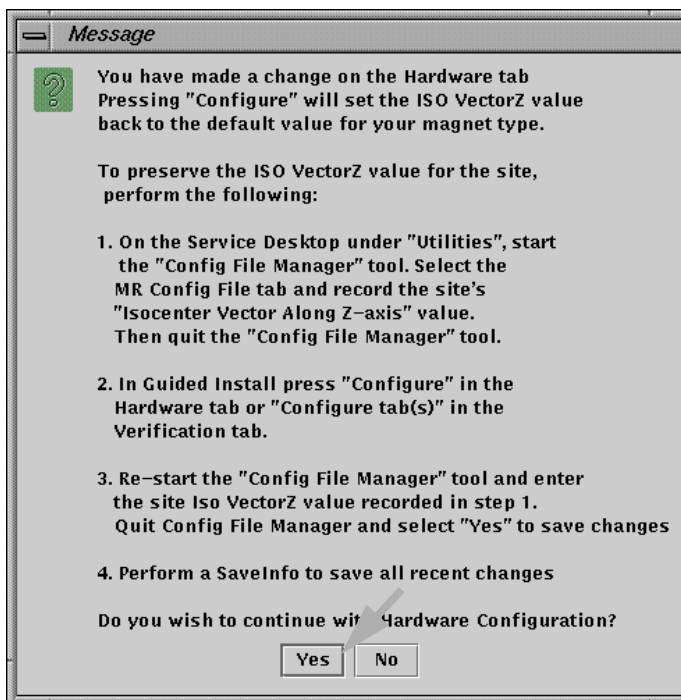


HARDWARE CONFIGURE  
ILLUSTRATION 4

Rev 0

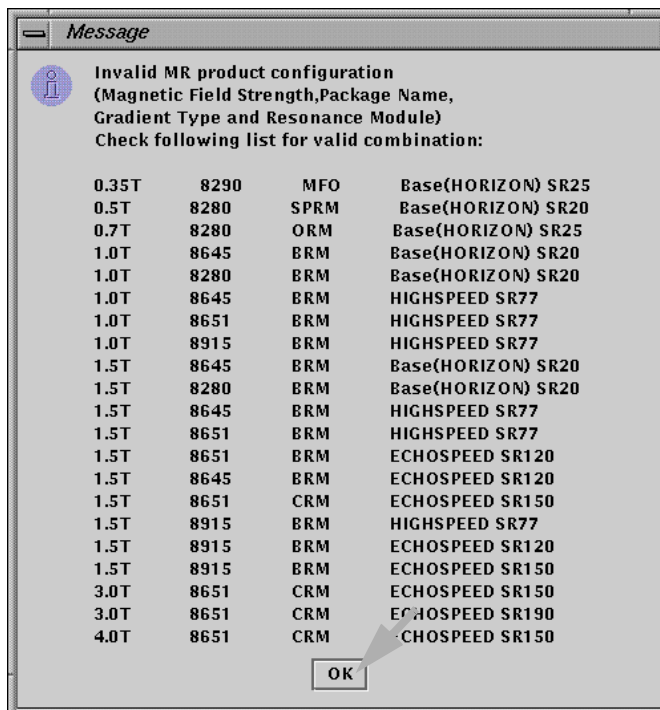
2. Procedure (continued)

8. The following message comes up. Click [Yes].



MESSAGE(1)  
ILLUSTRATION 5

9. The following message(Invalid MR Product Configuration) comes up. Click [OK].

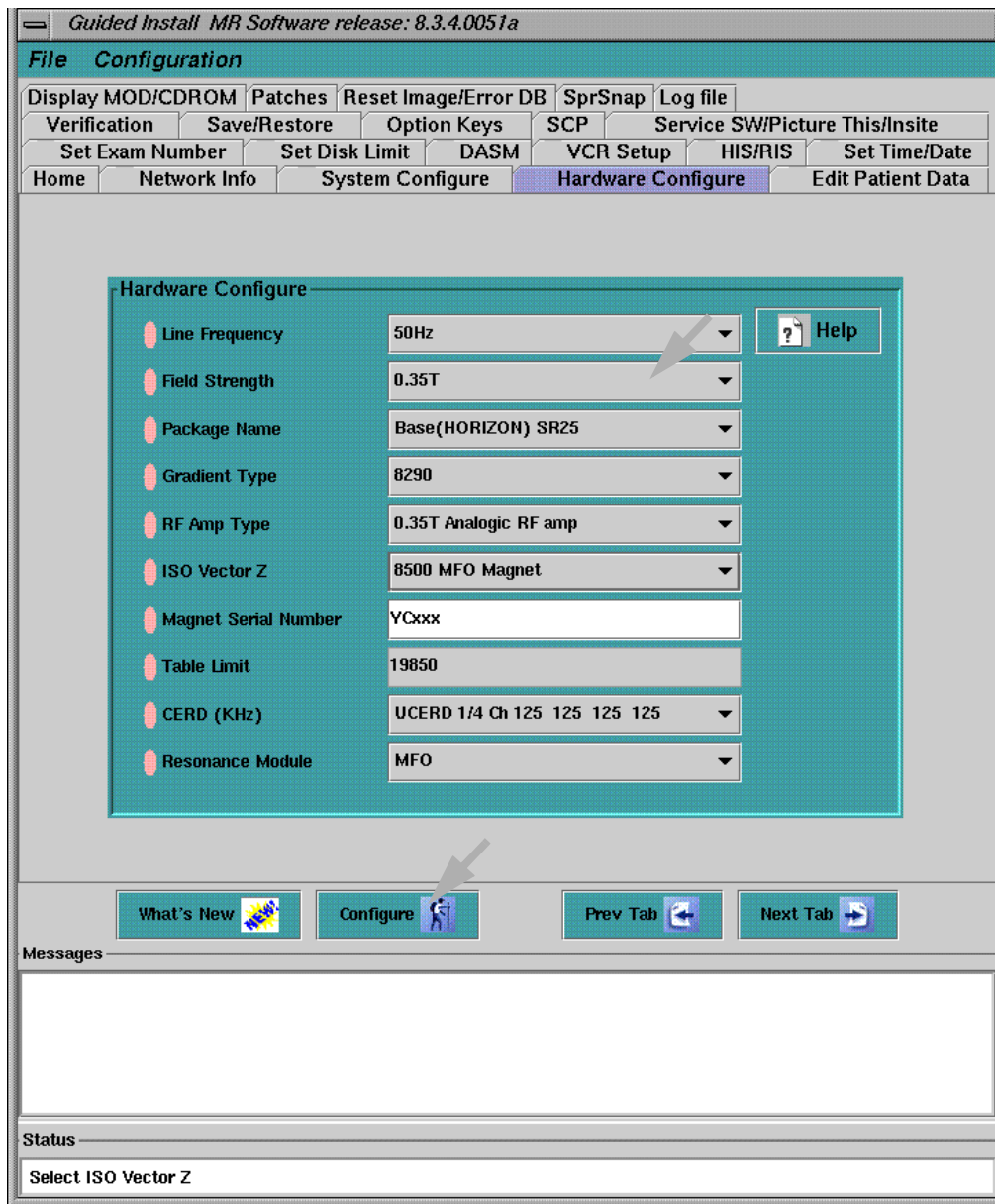


MESSAGE(2)  
ILLUSTRATION 6

Rev 0

## 2. Procedure (continued)

- 10. Set the Field Strength to 0.35T.
- 11. Click [Configure] button.

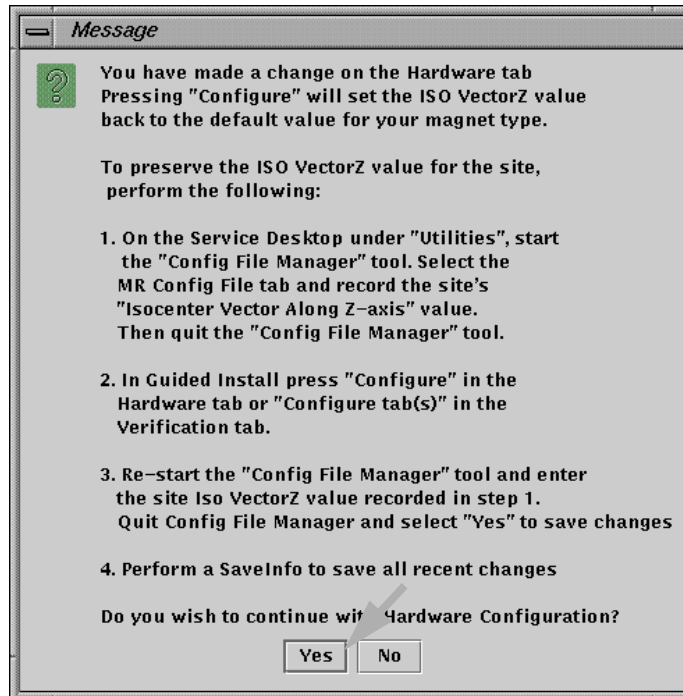


**HARDWARE CONFIGURE**  
ILLUSTRATION 7

Rev 0

**2. Procedure (continued)**

12. The following message comes up. Click [Yes].



**MESSAGE(1)**  
ILLUSTRATION 8

13. Select "File/Quit" to exit the "Guided Install MR Software".

14. It is necessary to reboot the system to update the file.

Rev 0

**Revision History**

<b>Rev</b>	<b>Date</b>	<b>Author</b>	<b>Primary Reasons For Change</b>
0	Jan 23, 2001	Y. Masumo	Initial Release