

# TABLE OF CONTENTS

<b>TABLE OF CONTENTS</b> .....	<b>1</b>
<b>1- Overview</b> .....	<b>2</b>
<b>2- Penetration Panel</b> .....	<b>3</b>
2-1 Remove Blank Panel/ Prepare Screen Room Opening Surface .....	3
2-2 Install Penetration Panel .....	3
<b>3- Power Cabinet</b> .....	<b>4</b>
<b>4- System Cabinet</b> .....	<b>5</b>
<b>5- Operator WorkSpace</b> .....	<b>6</b>
5-1 Operator Workspace Table Anchor Installation .....	6
5-2 Securing Operator Workspace Table To Floor .....	7
5-3 Locating OW Components .....	7
5-4 Warning Label Attachment .....	8
<b>6- Cooling Cabinet</b> .....	<b>8</b>

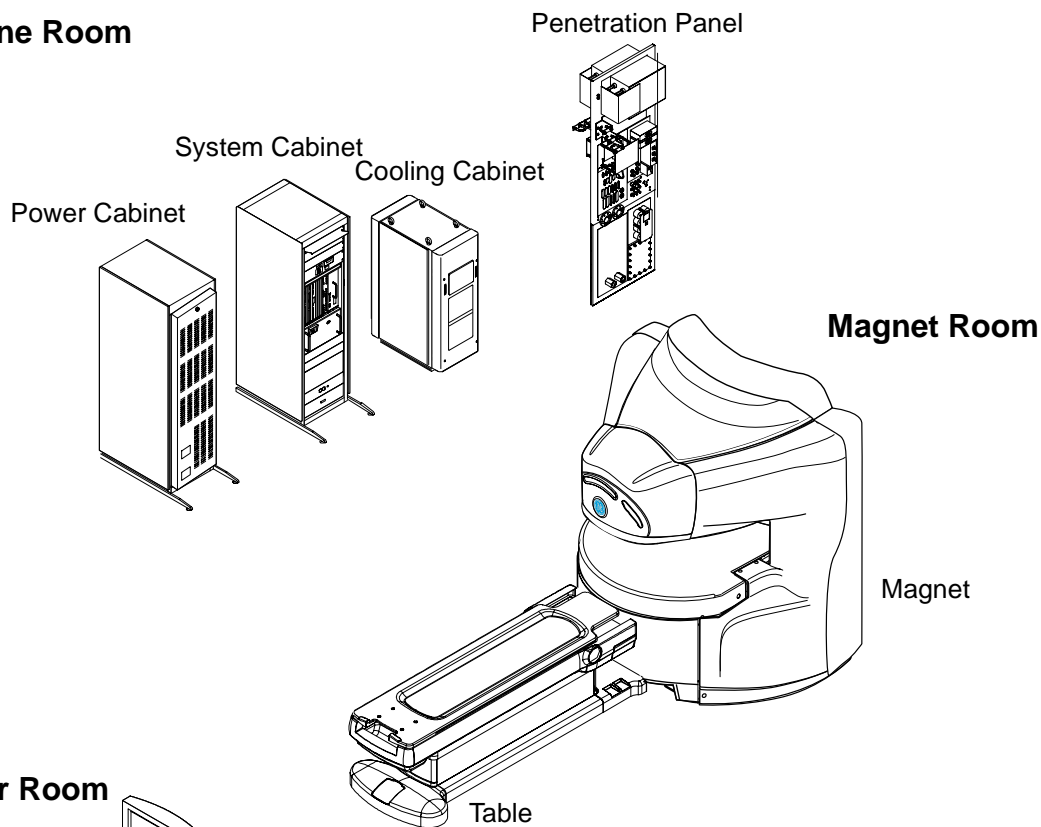
Rev 0

### 1. Overview

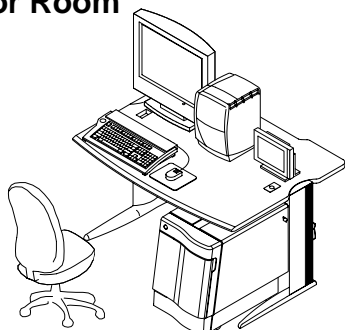
This document describes how to set the following cabinets to the proper location.

- Penetration Panel
- Power Cabinet
- System Cabinet
- Operator WorkSpace
- Cooling Cabinet

#### Machine Room



#### Operator Room



Operator WorkSpace

#### Note

It is not necessary to locate the Table in front of the magnet before 7th day "Table Installation".  
 Locate the Table so that it does not disturb the installation procedure

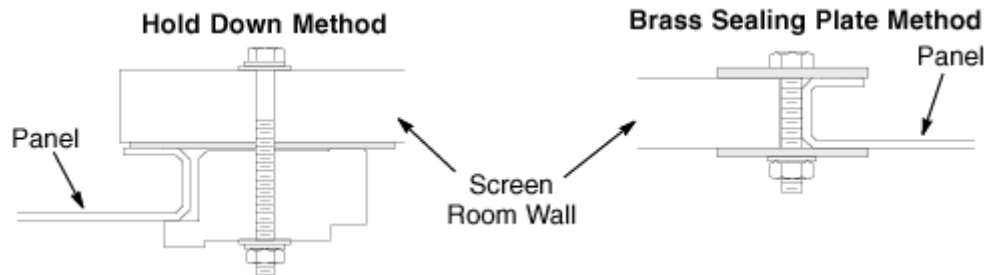
**SUB SYSTEM SETTING OVERVIEW**  
 ILLUSTRATION 1

Rev 0

## 2. Penetration Panel

### 2-1 Remove Blank Panel/ Prepare Screen Room Opening Surface

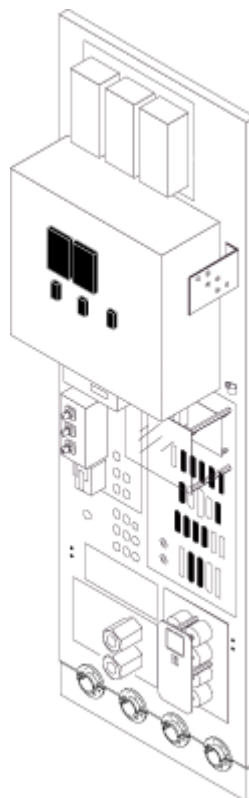
1. If still in place, remove vendor supplied blank panel. Save mounting hardware of either method shown below for installation of Penetration Panel.
2. Grade 8 bolts with black oxide coating should be used as mounting hardware. Tighten to torque of 20 lb– ft (1.5 to 2 turns after lock washer flattens).
3. To insure good conductivity, use a fine sandpaper or scouring pad to clean surface of screen room wall which will be in contact with Penetration Panel. **Do not sand surface of Penetration Panel as it is coated.**



**REMOVE BRANK PANEL**  
ILLUSTRATION 2

### 2-2 Install Penetration Panel

1. Install Penetration Panel using same method and hardware for mounting of blank panel above.
2. Seal all joints with copper foil tape with a conductive adhesive (3M #1181) for RF– tight integrity.



**INSTALL PENETRATION PANEL**  
ILLUSTRATION 3

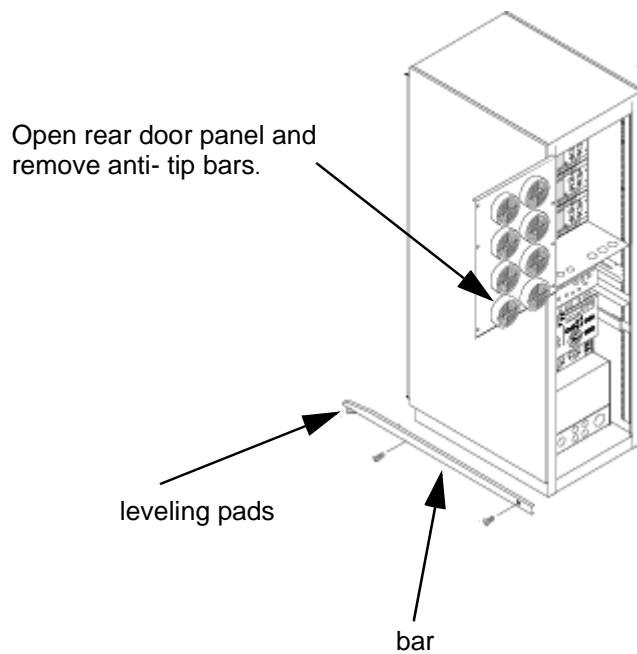
Rev 0

### 3. Power Cabinet

1. Move Power Cabinet to final position.
2. Open rear door panel.
3. Remove anti-tip bars from inside of cabinet.
4. Attach bars to cabinet.
5. Adjust leveling pads to level cabinet.

#### Note

Comply with UL requirements by either installing anti tip legs or securing the cabinet to the floor with local supplied brackets and floor anchors. If anchoring is required by local seismic code, secure to floor using floor anchors. Refer to local codes for seismic installation details.



**POWER CABINET SETTING  
ILLUSTRATION 4**

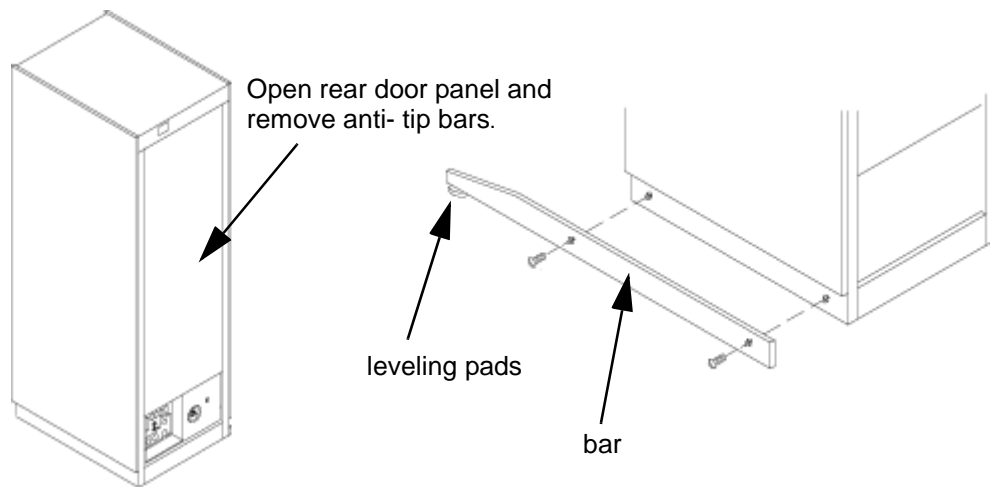
Rev 0

#### 4. System Cabinet

1. Move System Cabinet to final position.
2. Open rear door panel.
3. Remove anti- tip bars from inside of cabinet.
4. Attach bars to cabinet.
5. Adjust leveling pads to level cabinet.

#### Note

Comply with UL requirements by either installing anti tip legs or securing the cabinet to the floor with local supplied brackets and floor anchors. If anchoring is required by local seismic code, secure to floor using floor anchors. Refer to local codes for seismic installation details



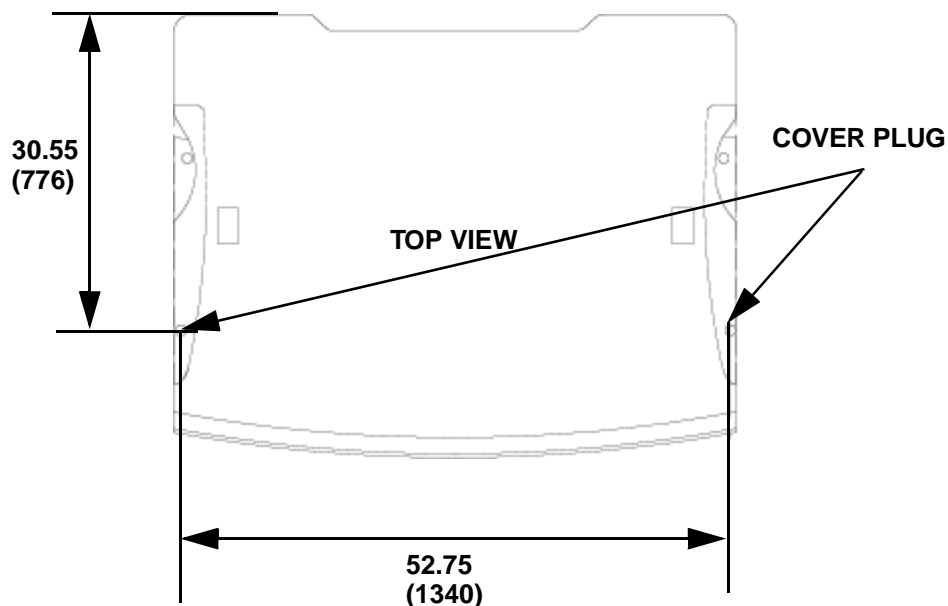
**SYSTEM CABINET**  
ILLUSTRATION 5

Rev 0

## 5. Operator WorkSpace

### 5-1 Operator Workspace Table Anchor Installation

1. Refer to room layout plan and consult with Site customer for exact location of Operator Workspace Table (2135998- 2).
2. Remove and discard the two (2) cover plugs. Locate and mark on floor the two hole locations at the front of the table legs.
3. Move table to prepare for installing the floor anchors in Steps 4 and 5.
4. At each hole marked in Step 2, drill a .38 inch hole and insert 1/ 4- 20 x .375 diameter anchor (2168253).
5. Secure anchor in place with supplied SettingTool (2168781).

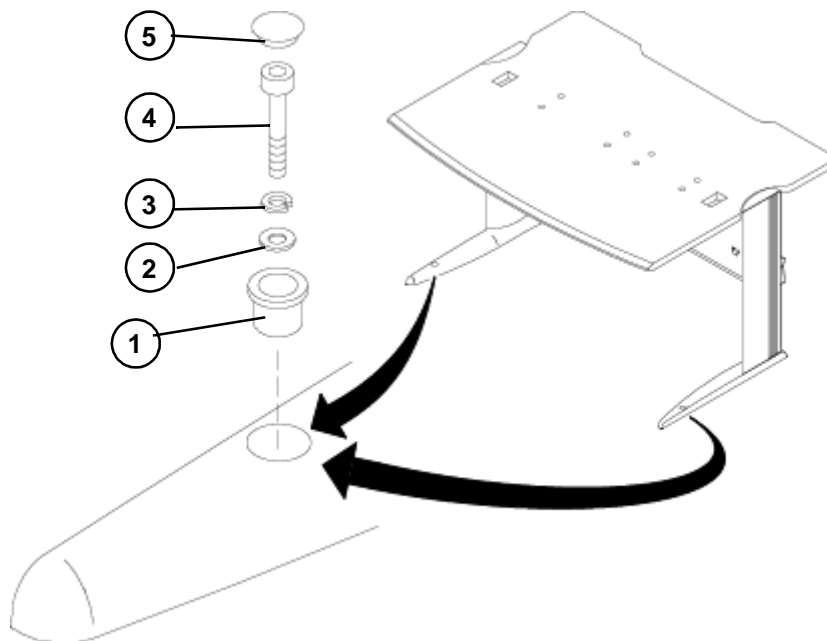


**OW TABLE ANCHOR INSTALLATION  
ILLUSTRATION 6**

Rev 0

### 5-2 Securing Operator Workspace Table To Floor

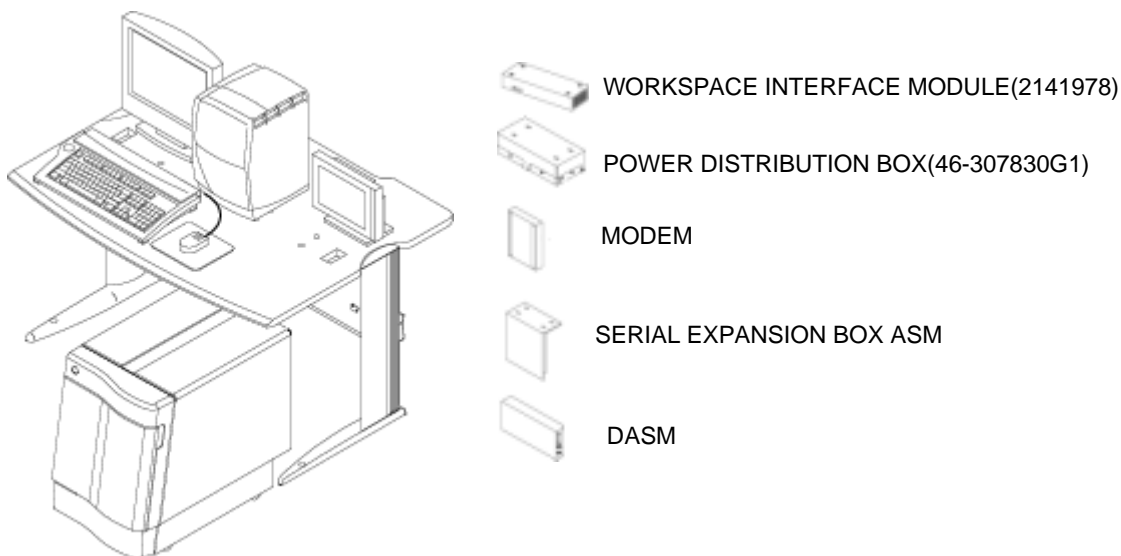
1. Insert Bushing (2151454) in table leg hole.
2. Insert as many Flat Washers (2168251) as required (3 provided for each leg) for securing table to floor.
3. Insert one Lock Washer (2168252) on top of Flat Washer( s).
4. Depending upon depth of previously installed anchor, install either the 1- 3/ 4 inch long or the 2 inch long 1/ 4 x 20 Hex Socket Cap Screw.
5. Install black nylon Plug (2168254).
6. Repeat anchoring process below for other leg.



**SECURING OPERATOR WORKSPACE**  
ILLUSTRATION 7

### 5-3 Locating OW Components

1. Locate the OW components.

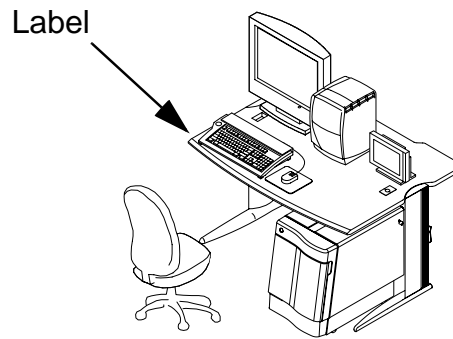


**LOCATING OW COMPONENTS**  
ILLUSTRATION 8

Rev 0

### 5-4 Warning Label Attachment

1. Select the label written in local language from caution label assy(2152854) and attach the label at the corner of OW.



**LABEL**  
ILLUSTRATION 9

### 6. Cooling Cabinet

1. Locate the Cooling Cabinet to final position.



**COOLING CABINET**  
ILLUSTRATION 10

Rev 0

**Revision History**

<b>Rev</b>	<b>Date</b>	<b>Author</b>	<b>Primary Reasons For Change</b>
0	Feb 20, 2001	Y. Masumo	Initial Version