

# TABLE OF CONTENTS

TABLE OF CONTENTS.....	1
1- Scan Parameter Setting .....	2
2- Phantom Setting .....	4
3- Scan .....	5
4- Data Analysis .....	7

Rev 0

### 1. Scan Parameter Setting

1. Click **[New Pt]**.
2. Input the following data in "patient information".
  - Patient Data: geservice
  - Weight: 50(Kg)

*PATIENT INFORMATION*

Accession Number

Patient ID

Patient Name

Birth Date  Age  Sex

Weight  (Lb)  (Kg)

Rad  Refer

Req Number  Stastus

Description

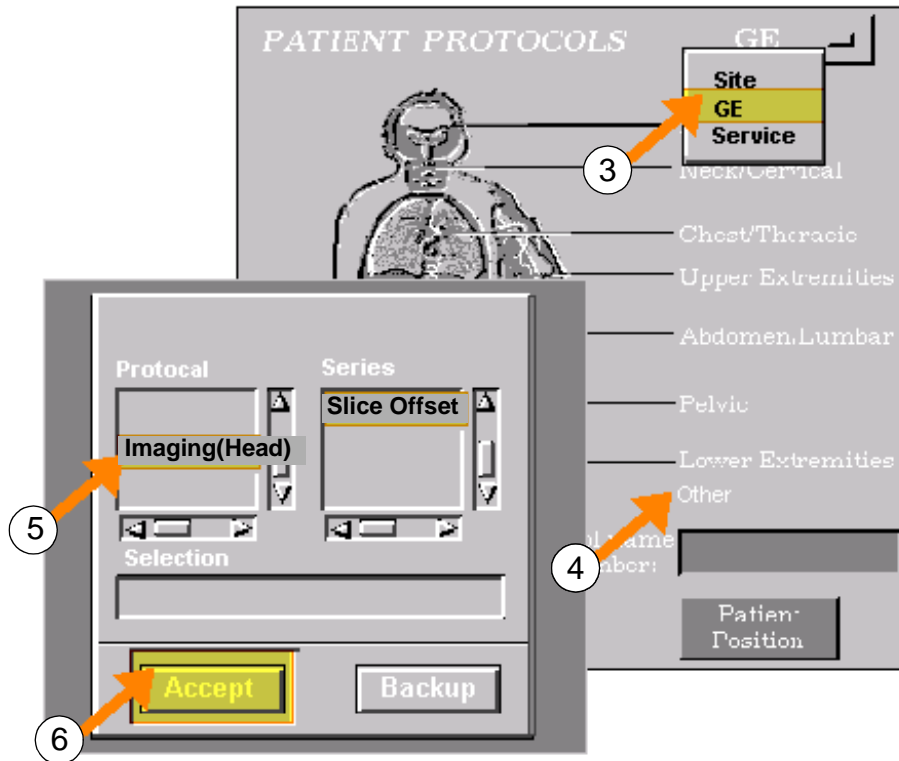
History

**PATIENT INFORMATION**  
ILLUSTRATION 1

Rev 0

1. Scan Parameter Setting(continued)

- 3. Choose GE.
- 4. Click **Other**. Protocol window comes Up.
- 5. Select [**Imaging(Head)**] from protocol.  
Select [**Sllice Offset**] from series.
- 6. Select [**Accept**]. )



PATIENT INFORMATION  
ILLUSTRATION 2

- 7. Select Save Series.

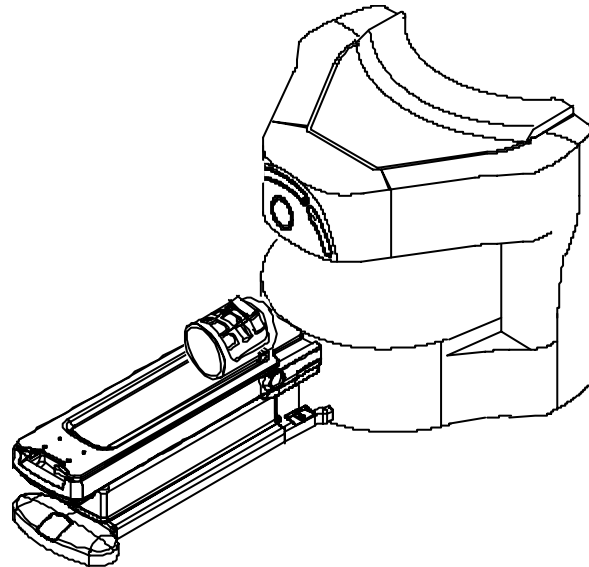


SAVE SERIES  
ILLUSTRATION 3

Rev 0

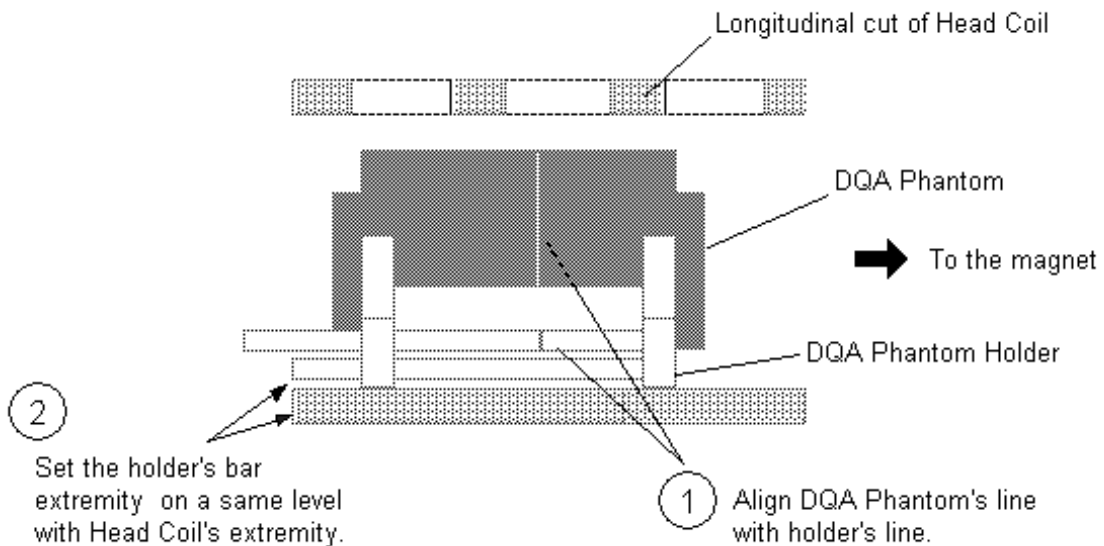
## 2. Phantom Setting

1. Set the Head Coil on the Cradle.



**HEAD COIL POSITIONING**  
ILLUSTRATION 4

2. Set the DQA phantom and phantom holder according to the following illustration.

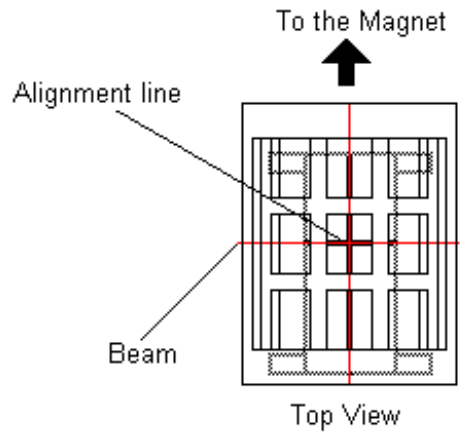


**DQA PHANTOM SETTING**  
ILLUSTRATION 5

Rev 0

**2. Phantom Setting (continued)**

3. Landmark in the sagittal and axial planes.



**ALIGNMENT LIGHT**  
ILLUSTRATION 6

4. At front enclosure on scanner, press LANDMARK, then MOVE TO SCAN.

**3. Scan**

5. Select [Auto Prescan].



**AUTO PRESCAN**  
ILLUSTRATION 7

Rev 0

3. Scan (continued)

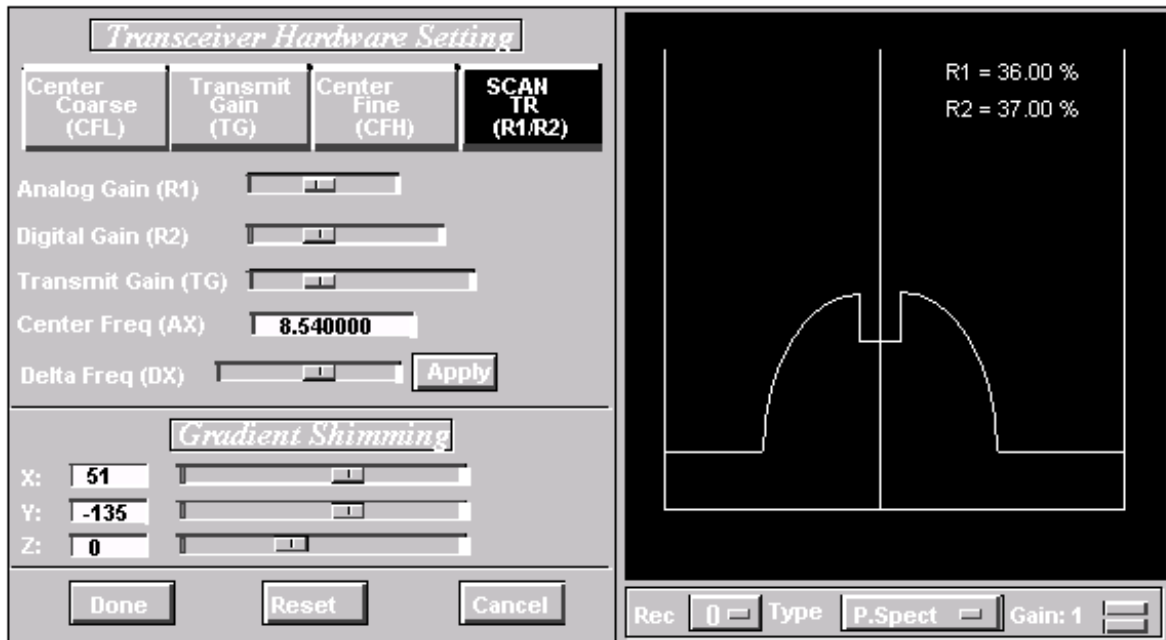
6. Select [Manual Prescan].



MANUAL PRESCAN  
ILLUSTRATION 8

7. Click on "SCAN TR" and see that the projection comes out.

8. Click on "Done".



SCAN TR  
ILLUSTRATION 9

9. Select [Scan]..



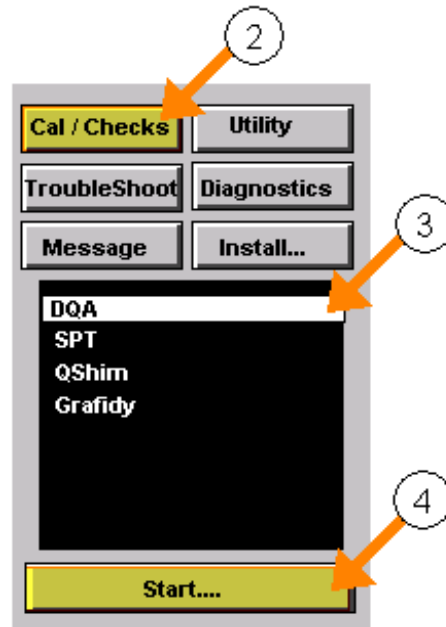
SCAN  
ILLUSTRATION 10

10. Verify that scanning has been started.

Rev 0

#### 4. Data Analysis

1. Select [**Service Desktop**] Icon.
2. Select [**Cal/Checks**].
3. Select [**DQA**].
4. Select [**Start...**].



**CAL/CHECKS**  
ILLUSTRATION 11

Rev 0

**4. Data Analysis (continued)**

5. Enter as follows to check the Offset Slice position.

Repeat the procedure till "**No adjustment required**" is displayed..

Output/Prompts	Input/Comments
<pre> ***** **      Welcome to Automated DQA calibration tool      ** ***** !!!!!!! Please perform [Phantom Position] test scan !!!!!       Press Return when &lt;Proper Phantom Position&gt; is obtained  MESSAGE from Process   960&gt;&gt; Fri Jun 28 15:49:40 1996 [Client]&gt; The request manager has been started  Press Return when the desired scan(s) is completed [Y]:  Accessing information from last run number...  Last Exam is:  ===== Exam   Description:  dqa isoz cal Exam   number:      50103 Series number:      1 Image  number:      2 =====  Accept the Default: (Y,N) [Y] :  If [N] is entered at the "Accept the Default:" prompt, {Exam number}, {Series number} and {Image number} might be entered manually.                     </pre>	<p>[Enter]</p> <p>[Enter]</p> <p>when it is the 1st Series input "1".</p> <p>Y: Accept (N: Change)</p>





Rev 0

**Revision History**

<b>Rev</b>	<b>Date</b>	<b>Auther</b>	<b>Primary Reasons For Change</b>
0	Jan 26, 2001	Y. Masumo	Initial Release