

TABLE OF CONTENTS

TABLE OF CONTENTS	1
1- Overview	2
2- Save Info Back Up Procedure	2
2-1 Host Computer Side	2
2-2 PC Side	2
3- Restoration procedure of Save Info Back Up file	3
3-1 PC Side	3
3-2 Host Computer Side	3
4- WS_FTP Pro Setup For Windows 98	4

Rev 0

1. Overview

Although Save Info data is saved by Save Info procedure performed before the software version up procedure, Save Info file might not be restored by Restore Info procedure performed after Restore Info procedure. To avoid the risk to lose the Save Info file, this procedure describes how to create of Save Info backup files. (site calibration files, configuration files, and site protocols)

Also, this procedure describes how to restore the Save Info backup file.

Save Info Back Up Procedure must be performed before software version up.

2. Save Info Back Up Procedure

2-1 Host Computer Side

1. Open Comand window.
2. Change the directory to "/usr/g/protocols"
[] `cd /usr/g/protocols` [Return]
3. Create site protocol compress file using the following command.
[] `tar -cvf site.tar site` [Return]

2-2 PC Side

Note

Refer to Section 4 WS-FTP Setup
if Host Computer is not connected using FTP tool.
If it is necessary to set PC network setting, refer to
"OW/ Setup & Cal/Software Install OW PC Release 8.x"

1. Connect the Host Computer using FTP tool.
Refer to "SOFTWARE INSTALL OW PC (RELEASE 8.X)(OW2SCA9.DOC)" about FTP Tool. (Directory: "OC/Setup and Calibration/SOFTWARE INSTALL OW PC")
2. Create a directory named "site protcols" under the C drive.
Also, create a directory named "save info data" under the C drive.]
3. Fetch the "site.tar" file under "/usr/g/protocols"of Host Computer to directory "c:/site protocols" of PC using FTP Tool. Use ASCII mode to transfer the files.
4. Fetch the following files of Host Computer to directory "c:/save info data" of PC.using FTP Tool. Use ASCII mode to transfer the files.

•/usr/g/caldir/ecccoeff.dat	--> grafidy compensation file
•/usr/g/caldir/shim_loc.gemech_YC***.plot	--> shimming cal result file
•/usr/g/caldir/ssm_mech_history.dat	--> mech shim history file
•/usr/g/caldir/ssm_shim_history.dat	--> passive shim history file
•/w/config/MRconfig.cfg	
•/w/config/CoilConfig.cfg	
•/w/config/GradientConfig.cfg	
•/w/config/Host.cfg	
•/w/config/Suite.cfg	
•/w/state/SaveDiagExamNum	
•/w/state/SaveExamNum	

Rev 0

3. Restoration procedure of Save Info Back Up file

If restore info is not performed properly after the software version up , perform the following procedure.

3-1 PC Side

1. Connect the Host Computer from PC using FTP tool.
2. Send "site.tar" file of PC to the directory "/usr/g/protocol" of Host Computer.
3. Send the other save info files to the proper directory of Host Computer.
 - /usr/g/caldir/ecccoeff.dat
 - /usr/g/caldir/shim_loc.gemech_YC***.plot
 - /usr/g/caldir/ssm_mech_history.dat
 - /usr/g/caldir/ssm_shim_history.dat
 - /w/config/MRconfig.cfg
 - /w/config/CoilConfig.cfg
 - /w/config/GradientConfig.cfg
 - /w/config/Host.cfg
 - /w/config/Suite.cfg
 - /w/state/SaveDiagExamNum
 - /w/state/SaveExamNum

3-2 Host Computer Side

1. Open Comand window.
2. Change the directory to "/usr/g/protocols".
[] `cd /usr/g/protocols` [Return]
3. Decompress the site.tar file using the following command.
[] `tar -xvf site.tar .` [Return]

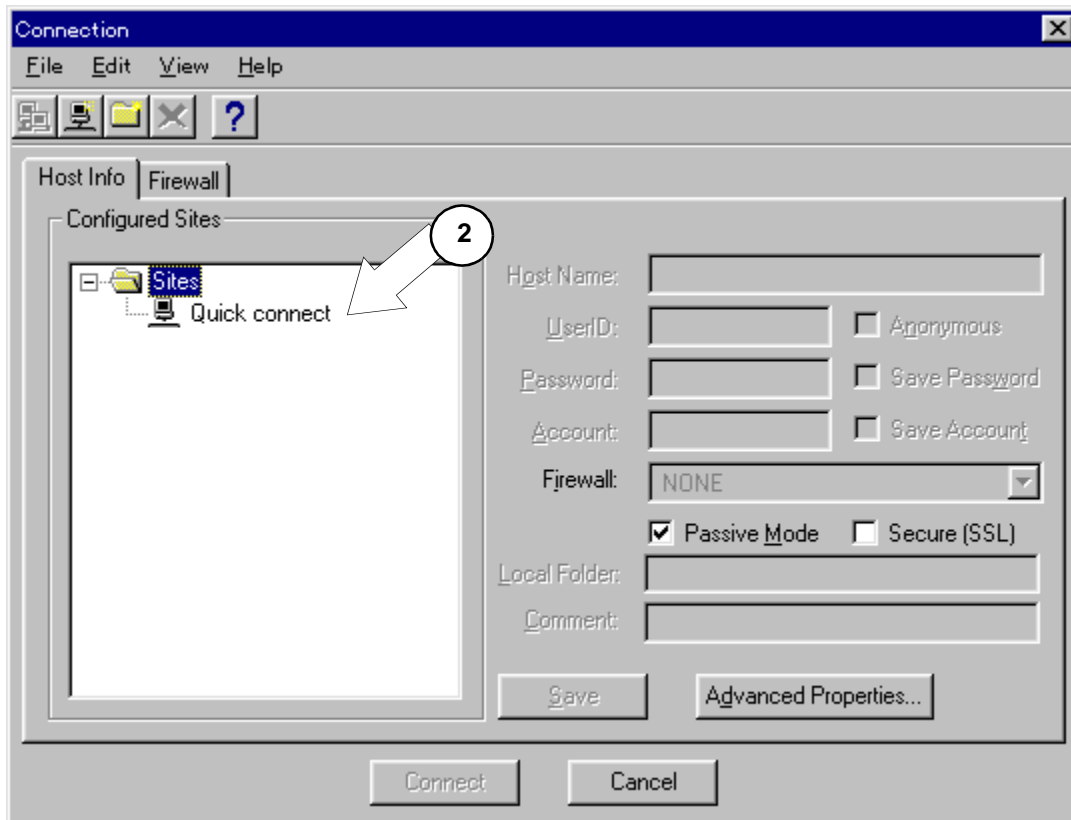
4. WS_FTP Pro Setup For Windows 98

1. Double click WS_FTP Pro icon or select WS_FTP Pro from startup menu.



WS_FTP PRO ICON
ILLUSTRATION 1

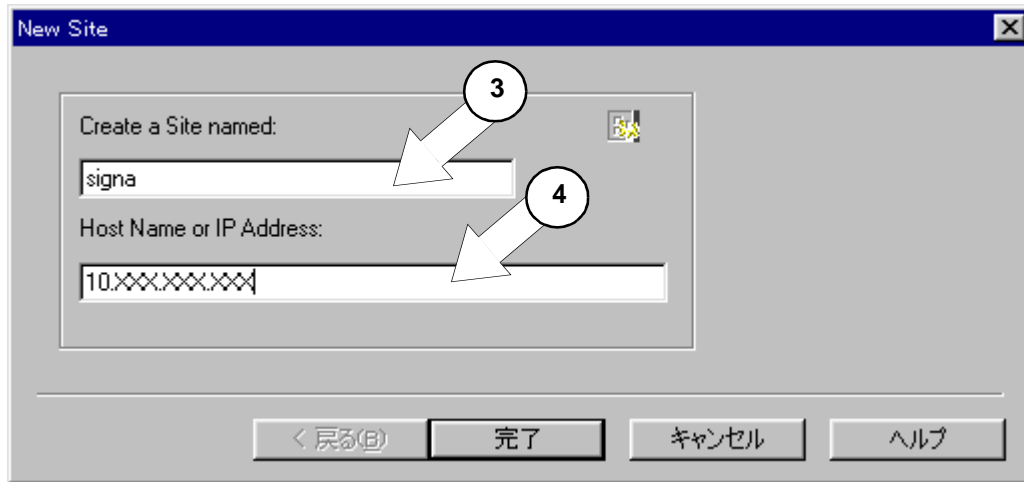
2. Select New Site from Host Info. .



CONNECTION GUI
ILLUSTRATION 2

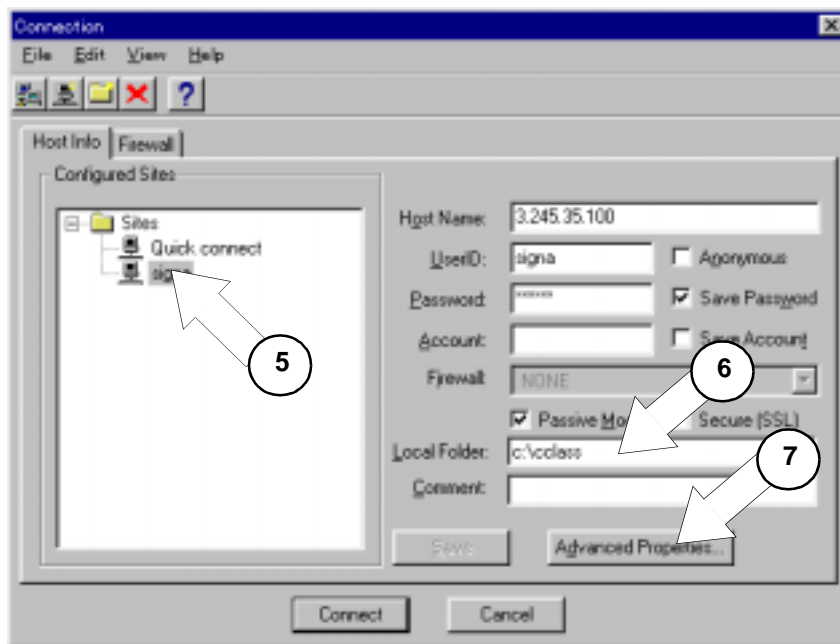
4. WS_FTP Pro Setup For Windows 98 (continued)

- 3. Enter Site Name. (e.g. signa)
- 4. Enter IP Address which is assigned for PC.



NEW SITE
ILLUSTRATION 3

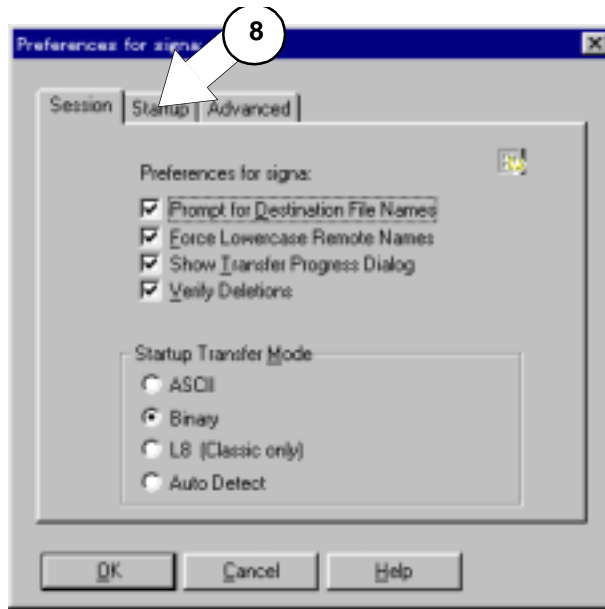
- 5. Check that the new icon is created in configure site.
- 6. Enter the directory of PC. (e.g. c:\cclass)
- 7. Click [Advanced Properties]



CONNECTION GUI
ILLUSTRATION 4

4. WS_FTP Pro Setup For Windows 98 (continued)

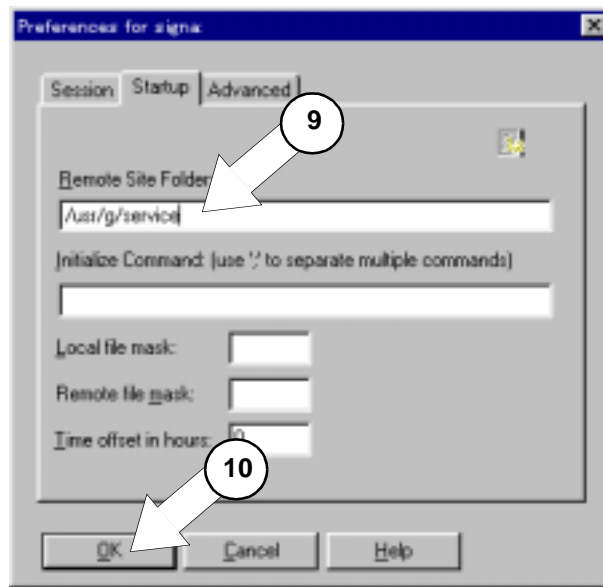
8. Click "Setup" Tab.



PREFERENCE ILLUSTRATION 5

9. Enter the directory of Host Computer. (e.g. usr/g/service)

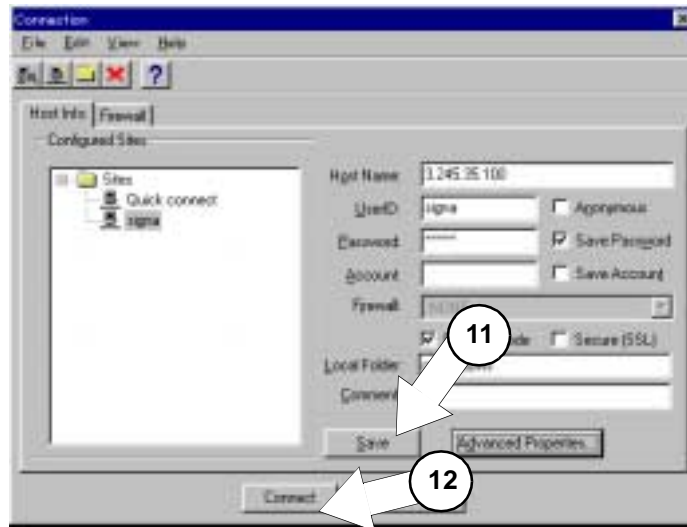
10. Click [OK]



PREFERENCE ILLUSTRATION 6

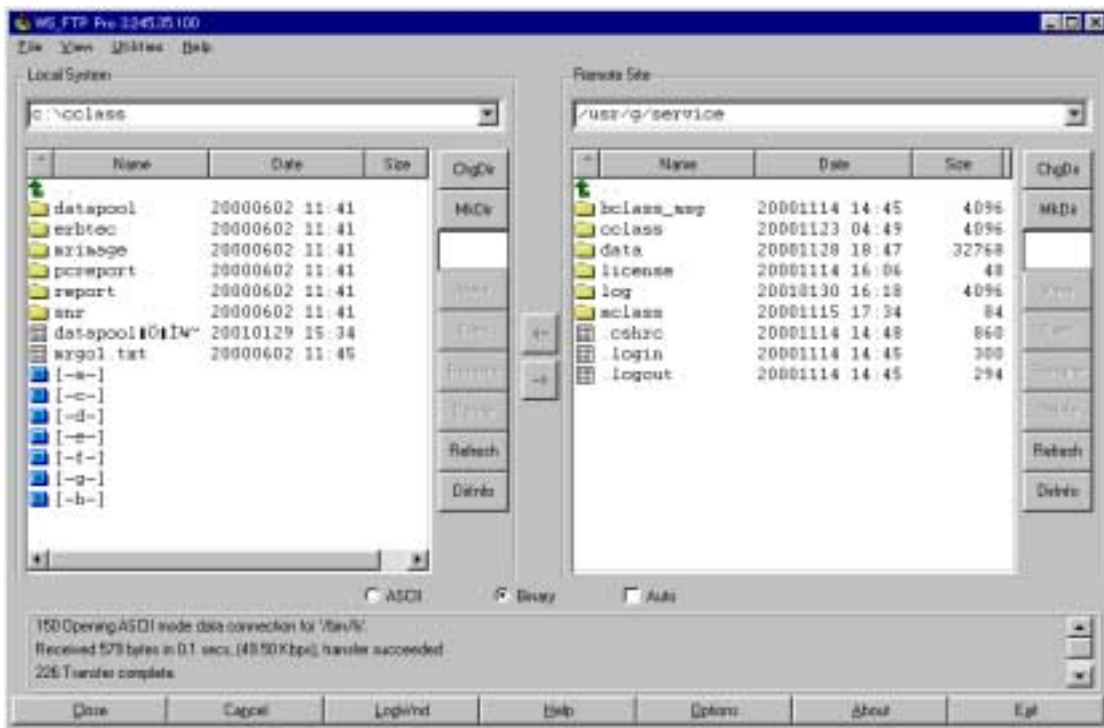
4. WS_FTP Pro Setup For Windows 98 (continued)

- 11.Click [Save].
- 12.Click [Connect].



**CONNECT GUI
ILLUSTRATION 7**

- 13.Verify Host computer is connected as following illustration.



**WS_FTP GUI
ILLUSTRATION 8**

Revision History

Rev	Date	Author	Primary Reasons For Change
0	Feb 9, 2001	Y. Masumo	Initial Release