

Rev 1

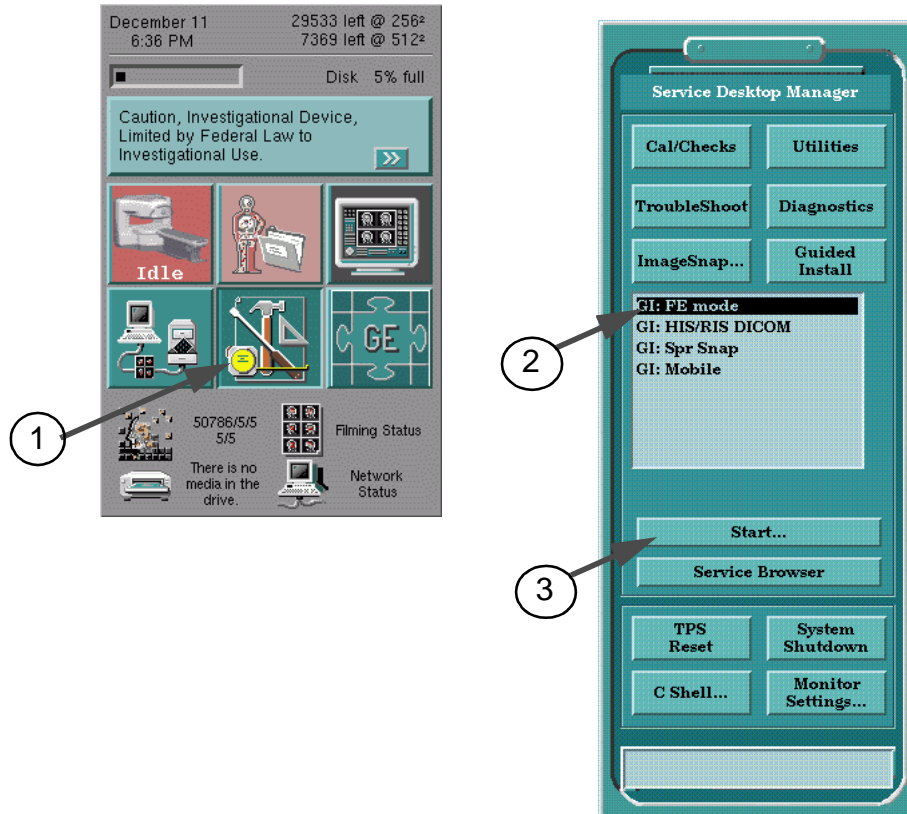
# TABLE OF CONTENTS

TABLE OF CONTENTS.....	1
1- Save Info. ....	2

Rev 1

**1. Save Info.**

1. Set the backup MOD media into MOD Drive.
2. Select [**Service Desktop**] Icon.
3. Select “**GI: FE mode**”.
4. Click [**Start**].



**SERVICE DESKTOP**  
ILLUSTRATION 1

5. Enter “operator” and hit [Return] key.  
Password: operator [Return]

Rev 0

1. Save Info (continued)

6. The following Screen is displayed. Click "Save/Restore".



INSTALL GUI  
ILLUSTRATION 2

Rev 0

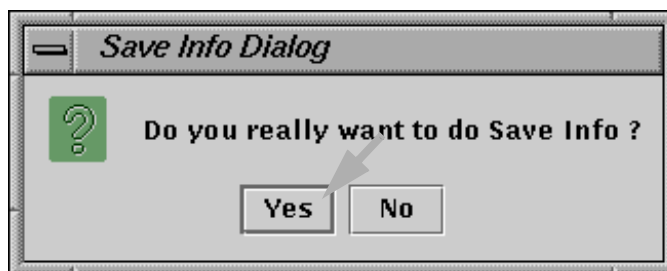
1. Save Info (continued)

7. Click "Save Information". .



SAVE/RESTORE GUI  
ILLUSTRATION 3

8. Click [Yes] for the Save Info Dialog.



INSTALL GUI  
ILLUSTRATION 4

9. Remove the MOD media from the MOD Drive.

10. Select [Quit Install]. installation gui

Rev 1

**Revision History**

<b>Rev</b>	<b>Date</b>	<b>Auther</b>	<b>Primary Reasons For Change</b>
0	Jan 26, 2001	Y. Masumo	Initial Version
1	Jul 3, 2002	Y. Masumo	P2: Updated illustration