

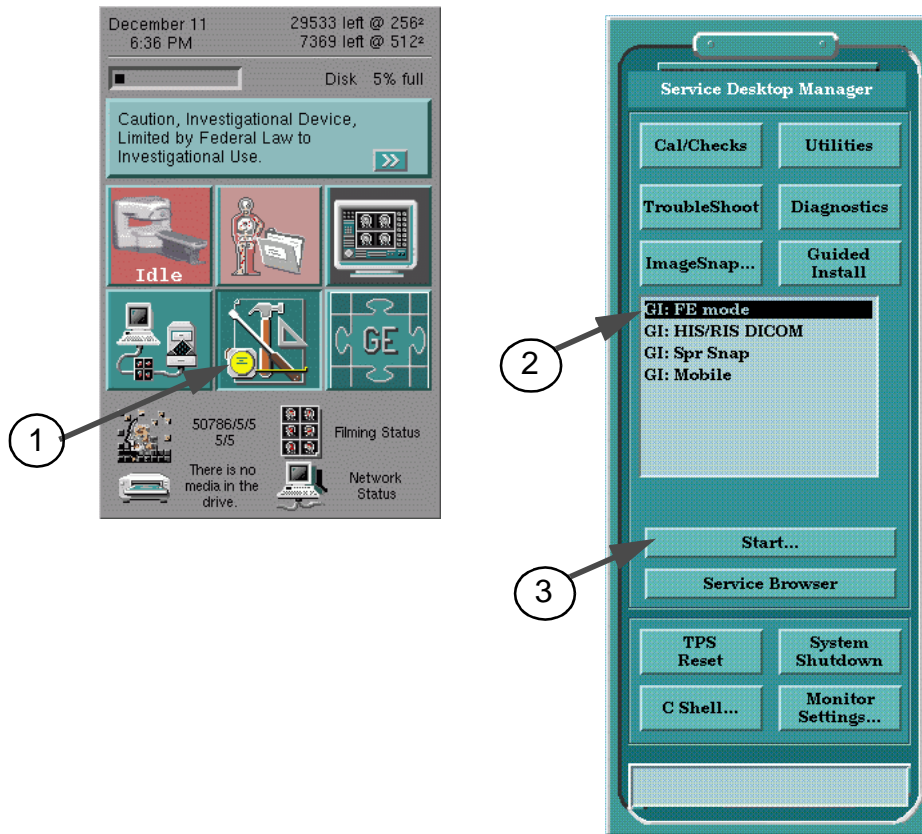
TABLE OF CONTENTS

TABLE OF CONTENTS.....	1
1- PATCH SOFTWARE LOAD PROCEDURE	2

Rev 0

1. PATCH SOFTWARE LOAD PROCEDURE

- 1. Select [Service Desktop] Icon.
- 2. Select "GI: FE mode".
- 3. Click [Start].



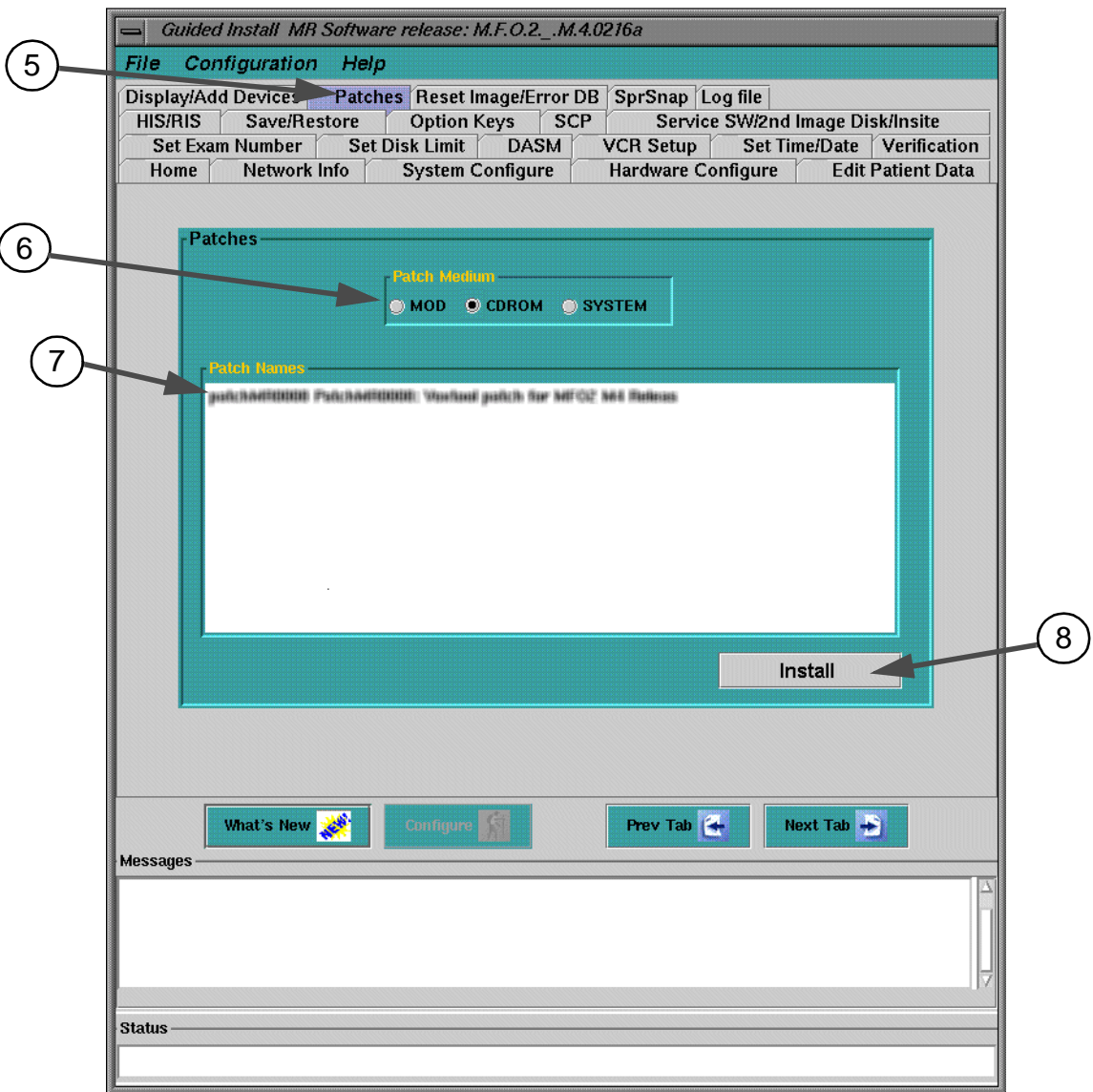
SERVICE DESKTOP ILLUSTRATION 1

- 4. Enter "operator" and hit [Return] key.
Password: **operator** [Return]

Rev 0

1. PATCH SOFTWARE LOAD PROCEDURE (continued)

- 5. Guided Install Screen comes up. Click [Patch] tab.
- 6. Select Patch Medium (MOD or CD-ROM).
- 7. Select Patch Name.
- 8. Click [Install]. Patch Software will be installed.



GUIDED INSTALL SCREEN
ILLUSTRATION 2

- 9. Select "System" from patch medium.
Verify that installed patch name is displayed in the patch name area.
- 10.Reboot the System.

Rev 0

Revision History

Rev	Date	Author	Primary Reasons For Change
0	Jun 20, 2002	Y. Masumo	Initial Version