

MAGNET SIDE COVER INSTALLATION

TABLE OF CONTENTS

Table of Contents	1
1.Preparation	2
2.Side Cover.....	3



FERROUS MATERIAL HAZARD! THE CRIMP TOOL, AND OTHER TOOLS AND PARTS REQUIRED FOR THIS INSTALLATION CONTAIN FERROUS MATERIAL AND WILL BE STRONGLY ATTRACTED TO MAGNET AND MAY BECOME DANGEROUS PROJECTILES. IF MAGNET IS AT FULL FIELD – KEEP ALL FERROUS TOOLS AT LEAST 10 FEET AWAY FROM THE MAGNET.

Rev 1

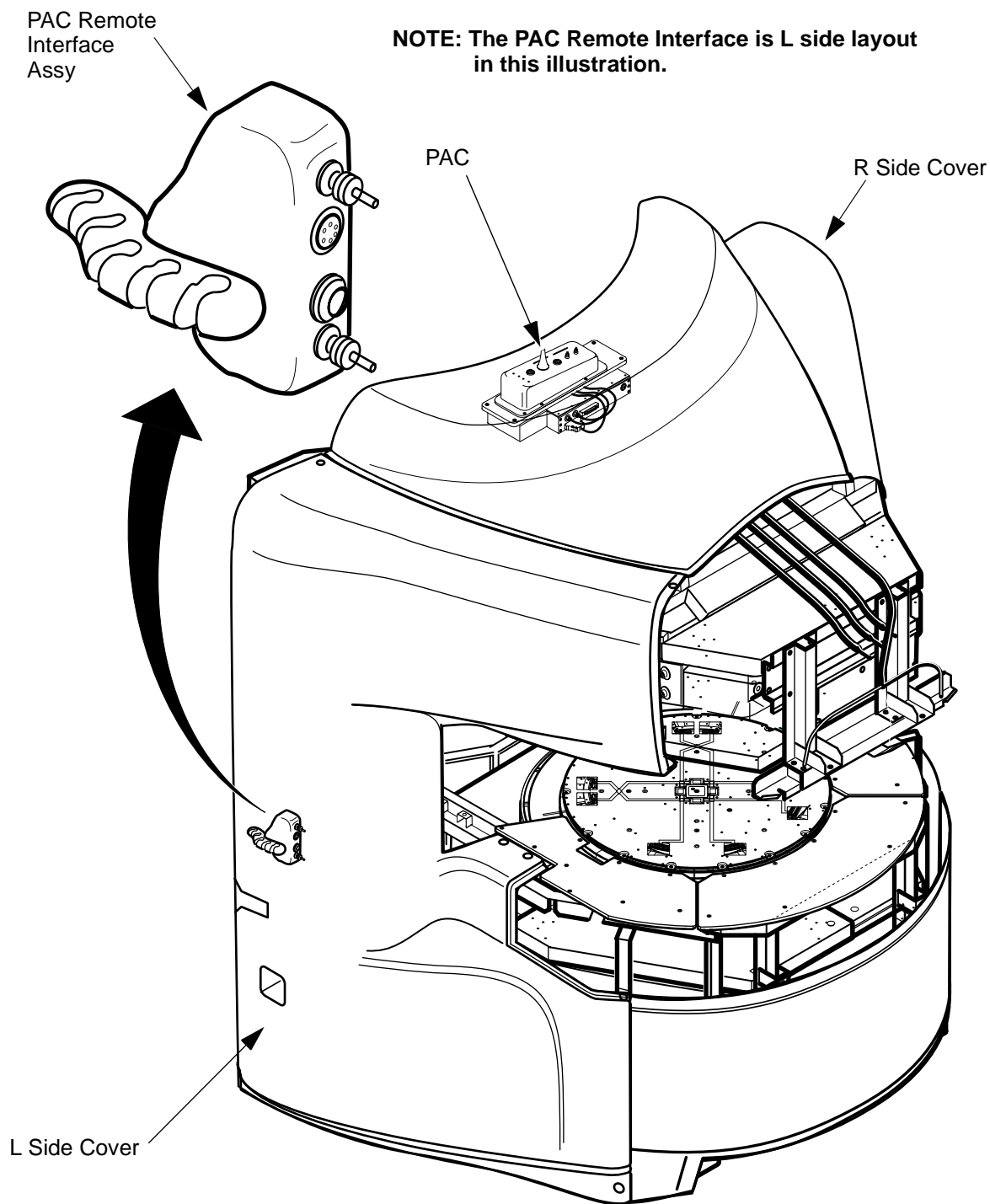
1. Preparation**Required Tool:**

Items	Qty	Type/Parts Number	Part
Metric Allen Wrench Set	1	Non ferrous	
Step Ladder	1	Non ferrous	
1m Ruler	1	Non ferrous	

Rev 1

2. Side Cover

1. Consult with customer to determine which side of magnet PAC Remote Interface Assy should be located.



**DETERMINE PAC REMOTE INTERFACE LOCATION
ILLUSTRATION 2-1**

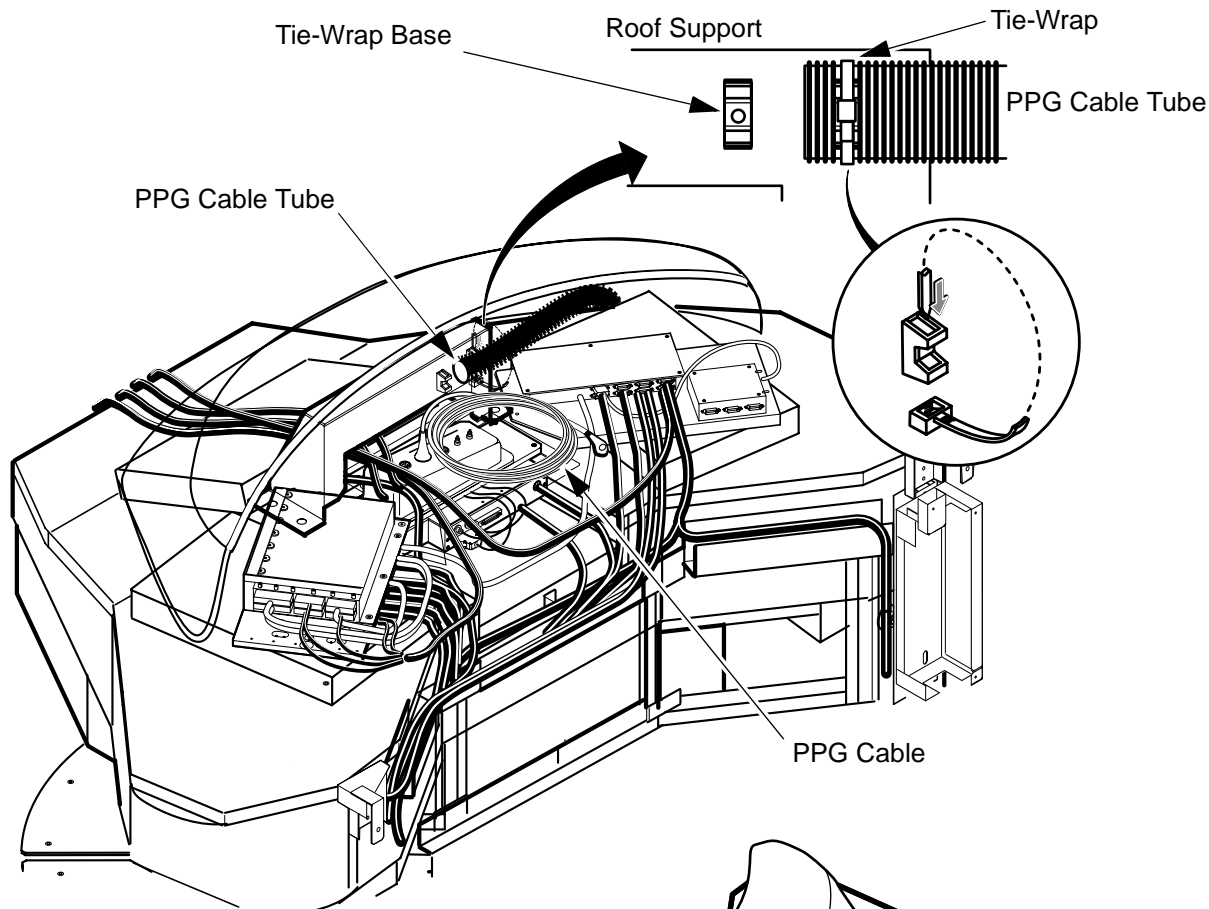
Rev 1

2. Side Cover(Continued)

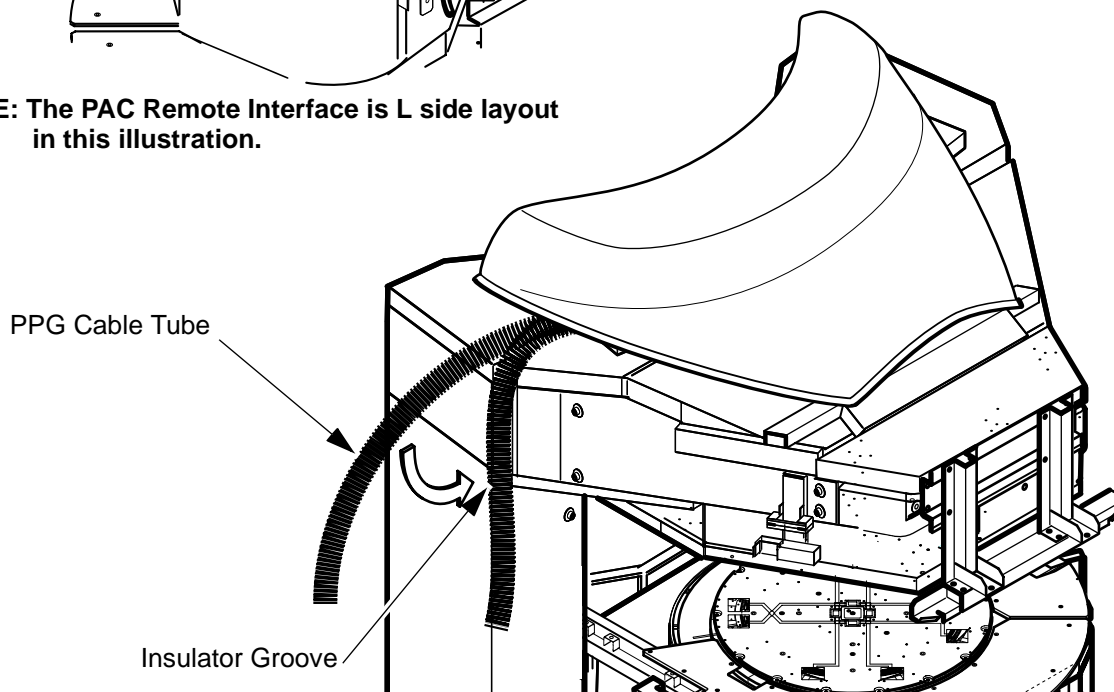
CAUTION

At least two people are required to install the Side Covers.

1. Install PPG Cable Tube to roof support with tie-wrap.
2. Route PPG Cable Tube to insulator groove of PAC remote interface side.



NOTE: The PAC Remote Interface is L side layout in this illustration.



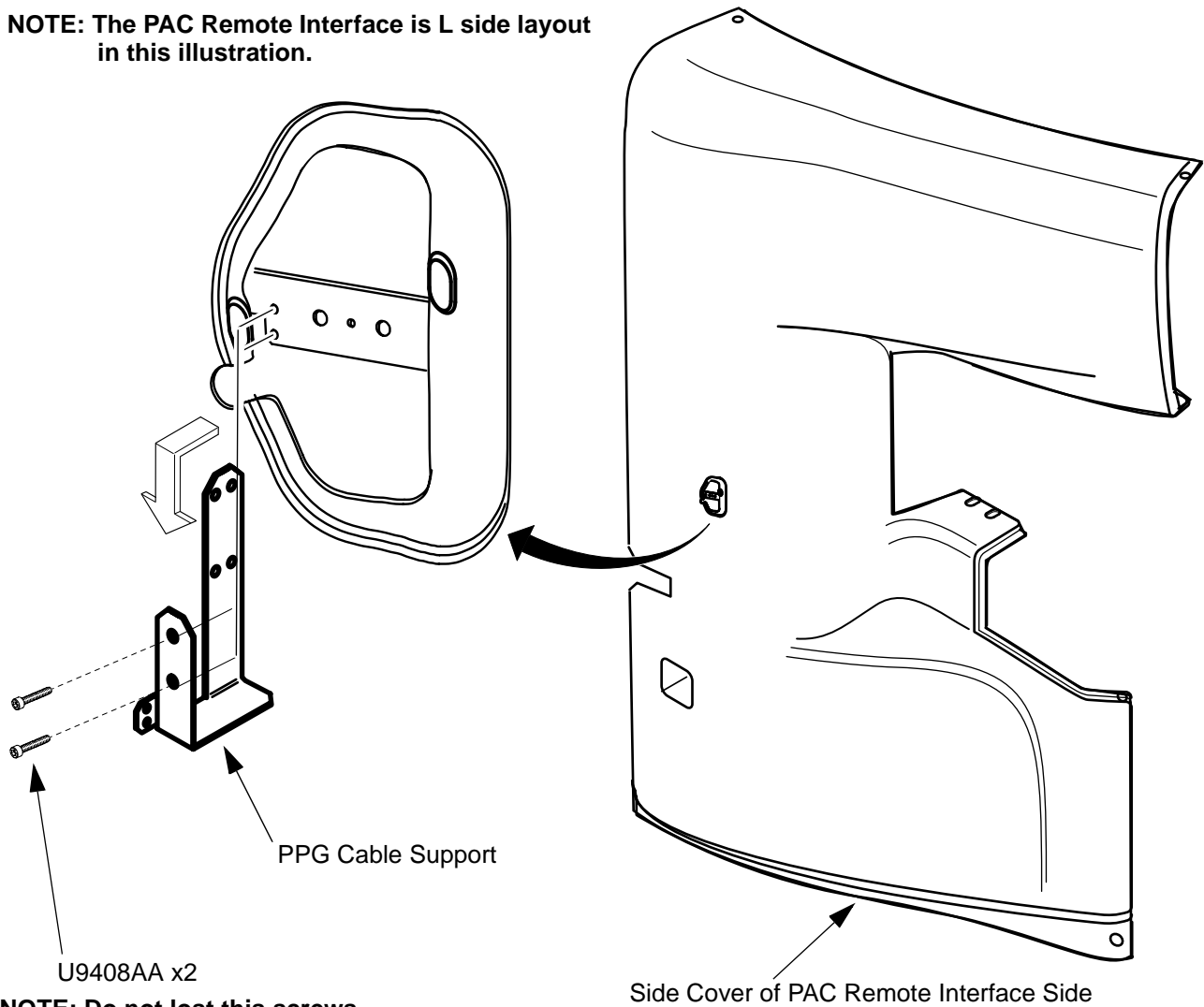
**SIDE COVER INSTALLATION
ILLUSTRATION 2-1**

Rev 1

2. Side Cover(Continued)

- 3. Remove PPG Cable Support by loosening 2 screws from side cover of PAC remote interface side.

NOTE: The PAC Remote Interface is L side layout in this illustration.



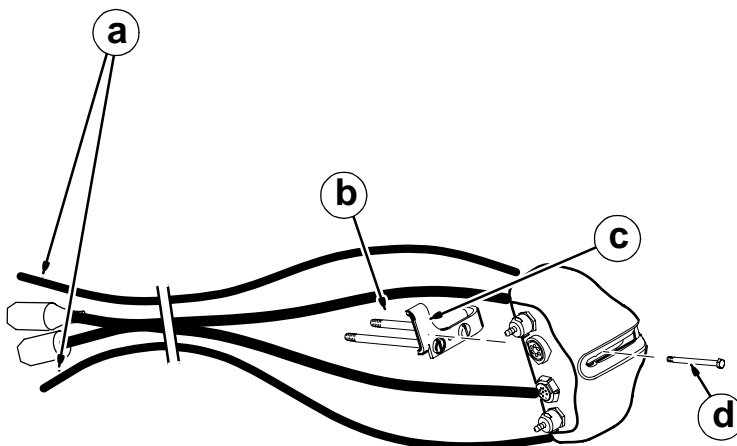
**NOTE: Do not lost this screws.
This screw will be reused.**

**SIDE COVER INSTALLATION
ILLUSTRATION 2-1**

Rev 1

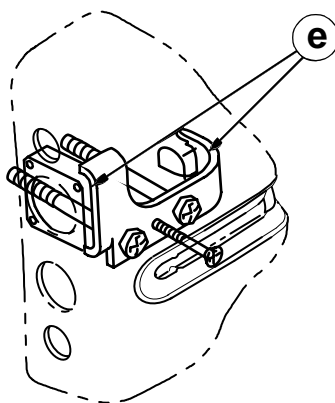
2. Side Cover(Continued)

4. Install the PAC Remote Interface Assy to the L or R Side Cover according to site layout.
 - a. Apply tape around end of pneumatic tubes and mark "TOP" to the opposite end of the tube connected to the top connector in the Remote PAC Interface Assembly and "BOTTOM" to the tube connected to the lower connector.
 - b. Insert two (2) screws M6 x 70mm (2109873-33) screws into Clip (2221023).
 - c. Insert Clip with screws into shell as shown with top cable and tube above Clip and bottom cable and tube below.
 - d. Hold in place by inserting provided M4 screw thru slot and turning about 3 or 4 turns into Clip.



PREPARE CABLES AND TUBES FOR ROUTING
ILLUSTRATION 2-1

- e. Make sure each side of clip is mounted behind housing blocks.



POSITION REMOTE PAC INTERFACE MOUNTING CLIP
ILLUSTRATION 2-2

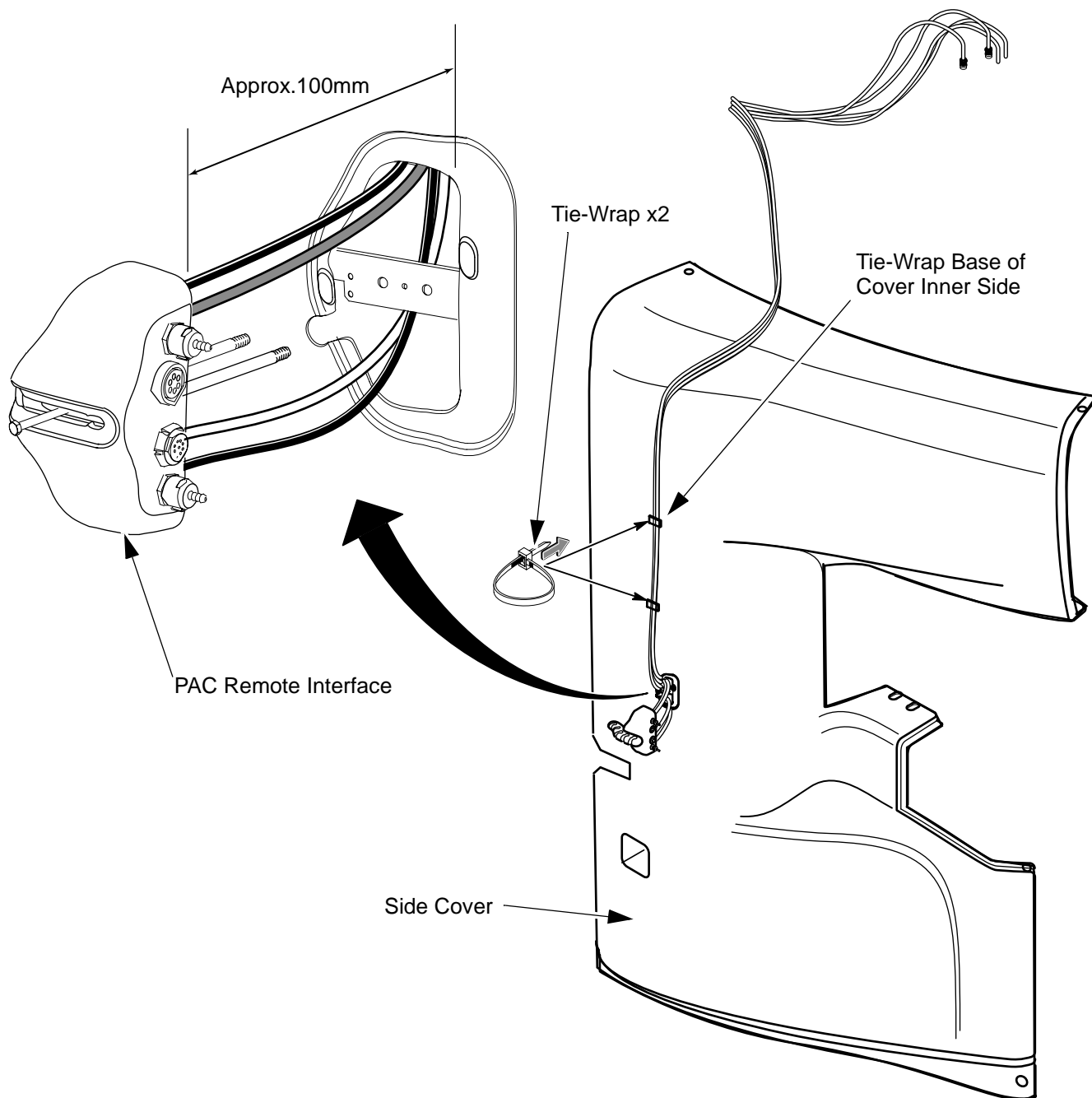
Rev 1

2. Side Cover(Continued)

5. Fix cables and tubes of PAC Remote Interface to inner side of side cover with 2 tie-wraps, then keep clearance approx.100mm between PAC remote interface and side cover outside.

Note:Top two cables will be routed thru top opening and bottom two cables will be routed thru lower opening.

NOTE: The PAC Remote Interface is L side layout in this illustration.



**SIDE COVER INSTALLATION
ILLUSTRATION 2-1**

Rev 1

2. Side Cover(Continued)

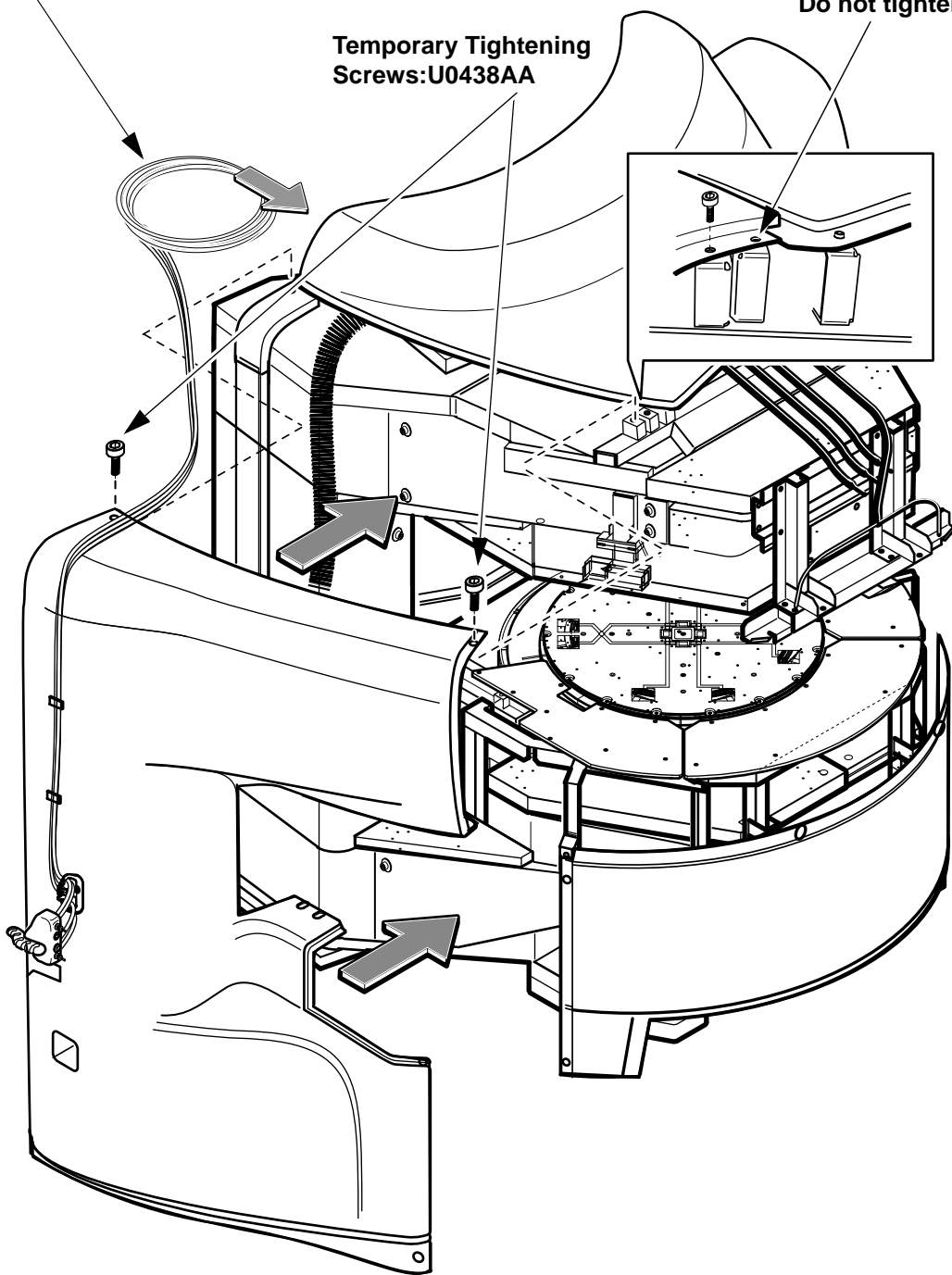
6. Put PAC remote interface cables and tubes of side cover onto the magnet.
7. Install Side Cover of PAC remote interface side to the magnet with 2 screws of cover upper side. This side cover installation is temporary fixing.

CAUTION:
Be careful to cable damage
when installing side cover.

Cables and Tubes of
 PAC Remote Interface

Temporary Tightening
 Screws:U0438AA

Do not tighten this hole.

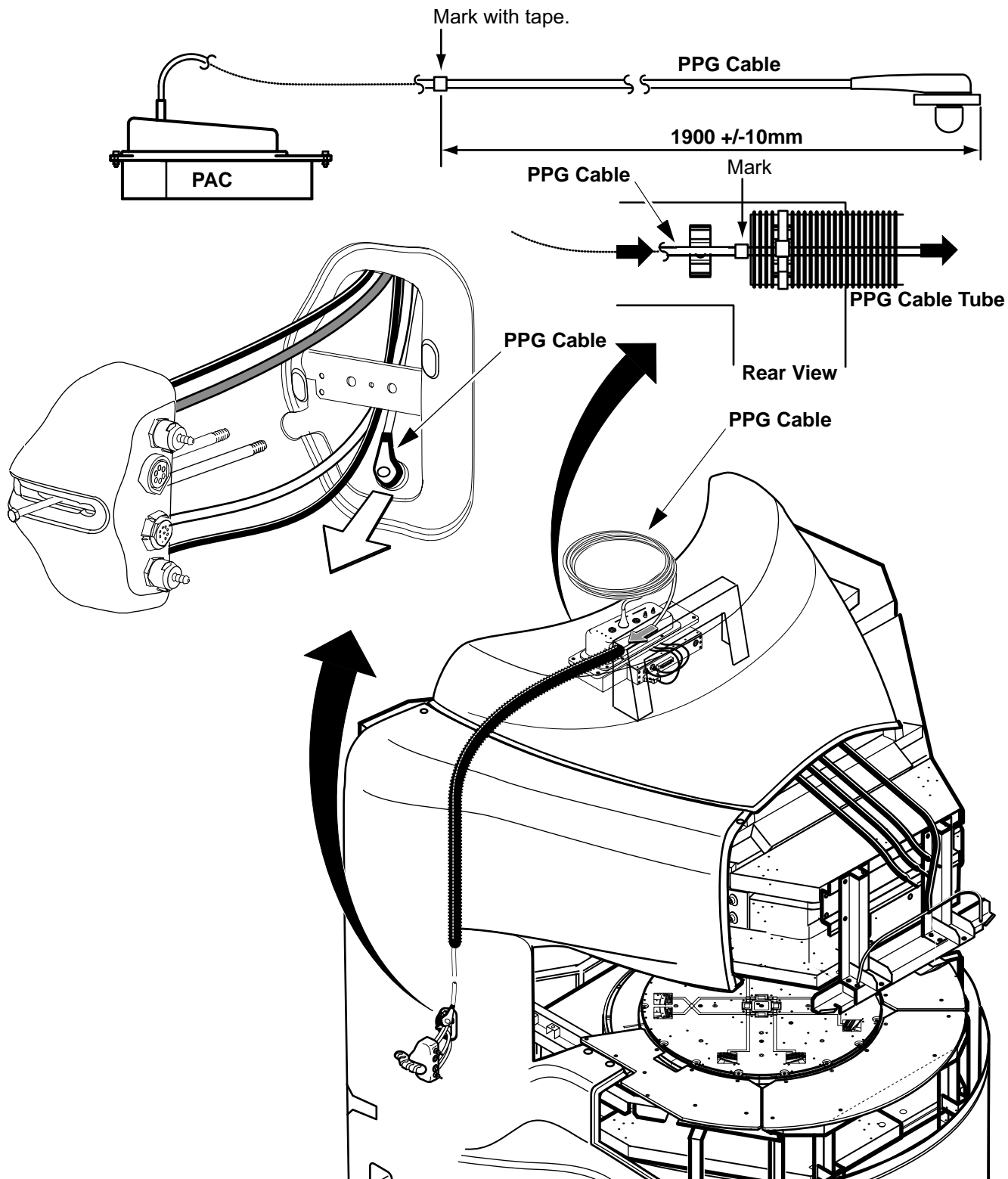


SIDE COVER INSTALLATION
 ILLUSTRATION 2-1

Rev 1

2. Side Cover(Continued)

8. Mark 1900 +/-10mm position from probe side of PPG cable with tape using ruler.
9. Insert PPG Cable into tube until cable marked position.
10. Draw PPG Cable Probe from under side of PAC remote interface hole.
11. Send PPG Cable from upper magnet side so that there is not rest.

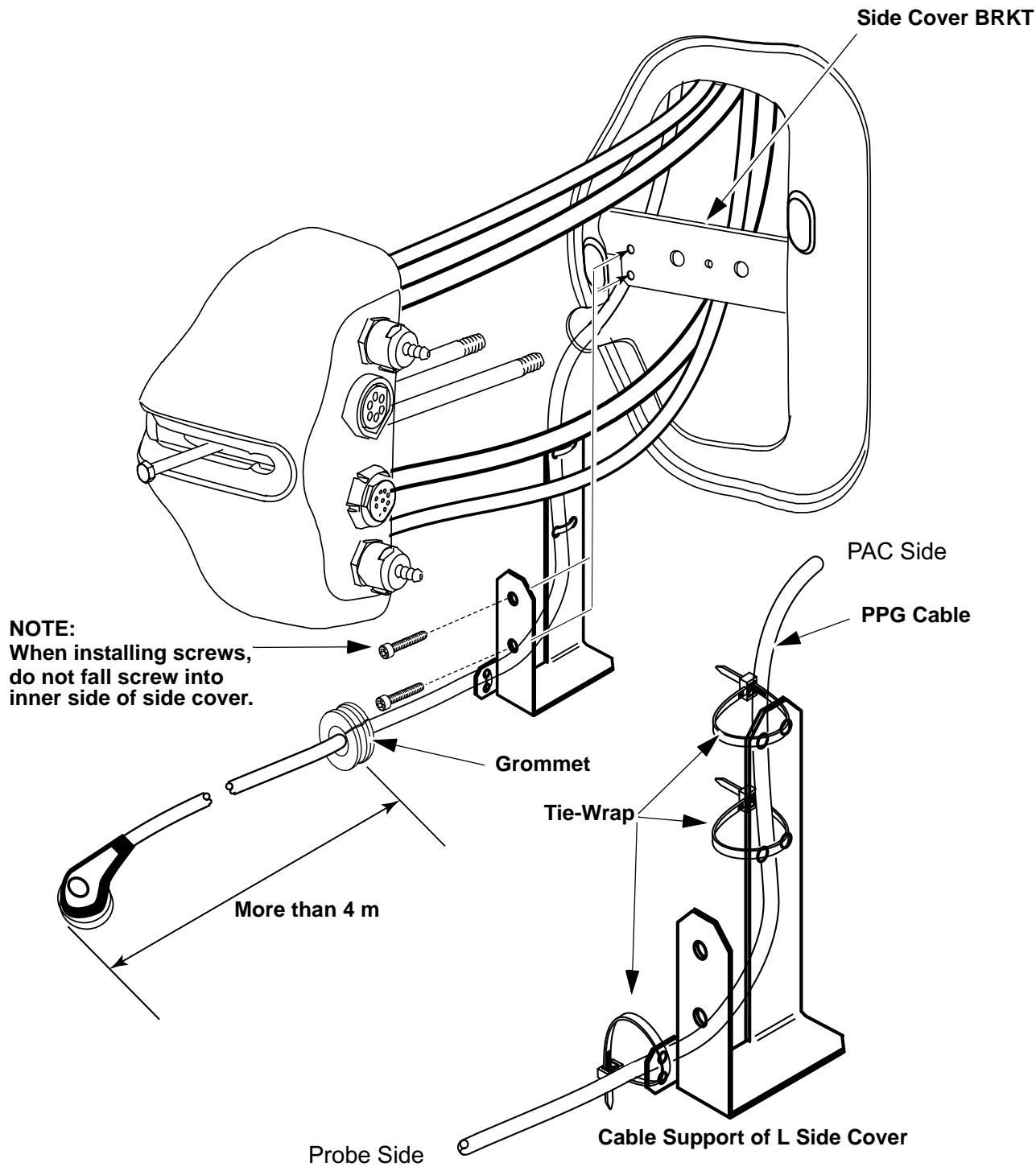


SIDE COVER INSTALLATION
ILLUSTRATION 2-1

Rev 1

2. Side Cover(Continued)

- 12. Attach grommet to PPG cable. Check that there is more than 4 m between grommet and probe of PPG cable.
- 13. Attach Cable Support to PPG cable with 3 tie-wraps (U0200AC).
- 14. Install Cable Support to side cover BRKT with removed 2 screws.

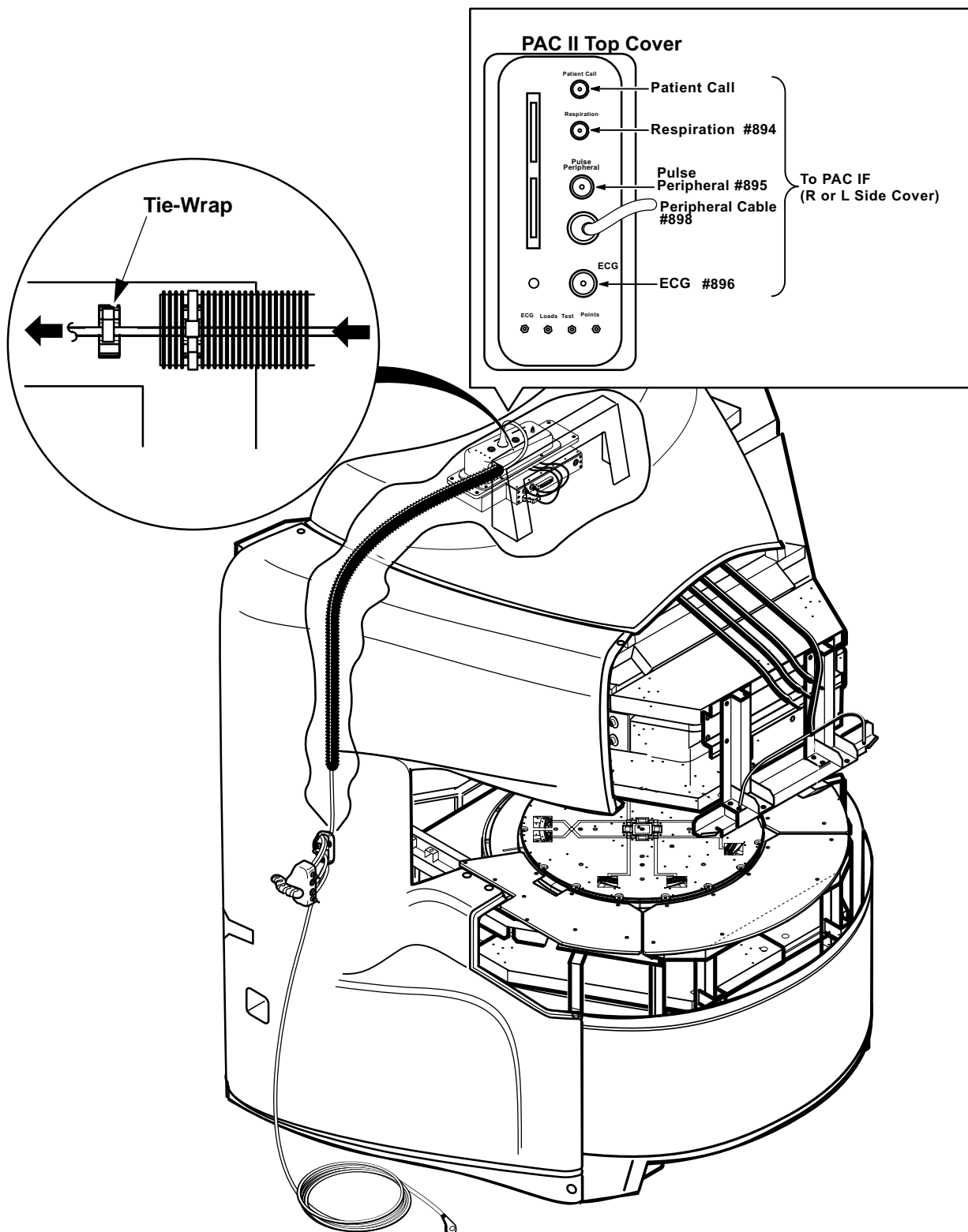


**SDIE COVER INSTALLATION
ILLUSTRATION 2-1**

Rev 1

2. Side Cover(Continued)

- 15. Pull PPG Cable lightly from upper magnet side.
- 16. Fix PPG Cable to roof support with tie-wrap.
- 17. Route and connect cables and tubes of PAC Remote Interface Assy to PAC on the magnet.

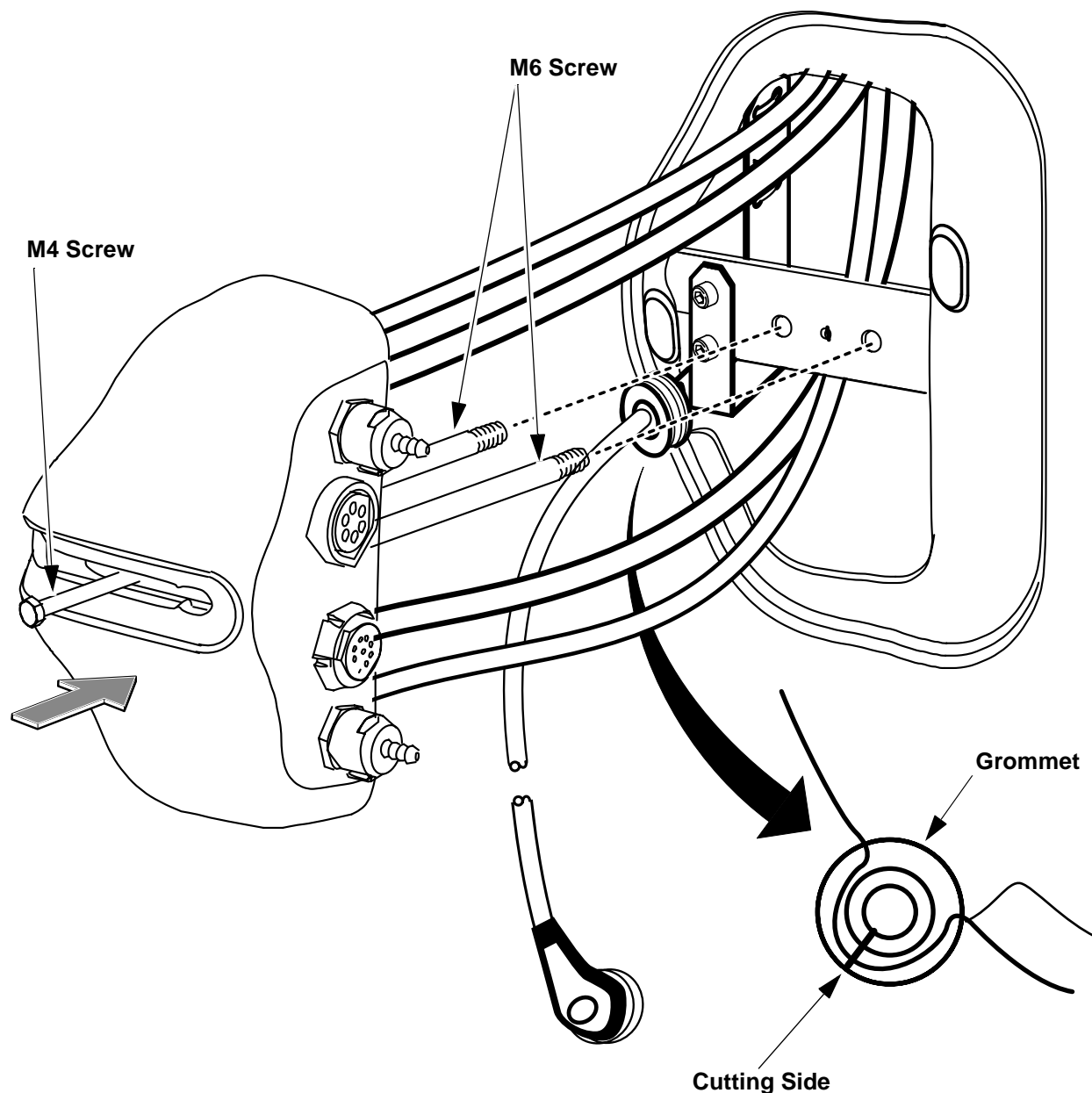


**INSTALLING REMOTE PAC INTERFACE
ILLUSTRATION 2-1**

Rev 1

2. Side Cover(Continued)

18. Set Grommet/PPG Cable to side cover, then direct cutting side of grommet to bottom side.
19. Use **M4** screw thru slot to lift and guide small end of Clamp over block inside housing.
20. Using screwdriver thru housing slot, tighten down the **M6** screws to lock housing in place.
21. Remove **M4** screw and save for use at later time since it would be required if Remote PAC Interface Assembly would need to be removed at any time in the future. OR Turn the M4 screw inward until there is clearance for sliding the PAC Hanger Bar in T5 into place.



INSTALLING REMOTE PAC INTERFACE
ILLUSTRATION 2-1

Rev 1

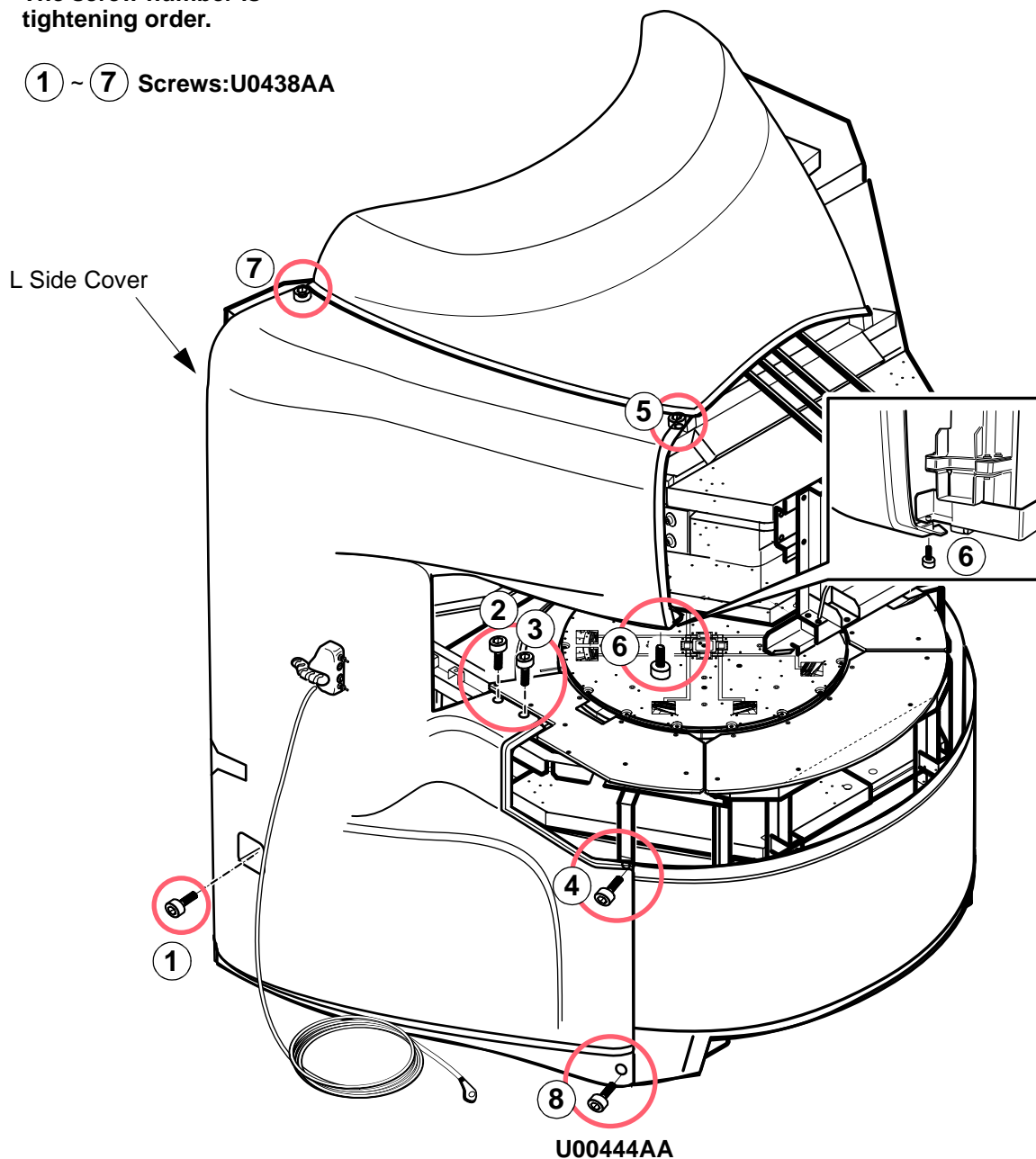
2. Side Cover(Continued)

22.Fix Side Cover of PAC interface side with 8 screws.

NOTE:
PAC Remote Interface is L side layout
in this illustration.

NOTE:
The screw number is
tightening order.

① ~ ⑦ Screws:U0438AA



SIDE COVER INSTALLATION
ILLUSTRATION 2-1

Rev 1

2. Side Cover(Continued)

Another Side:

23.Install the dummy PAC Remote Interface for another side cover.(There is no cable connection)

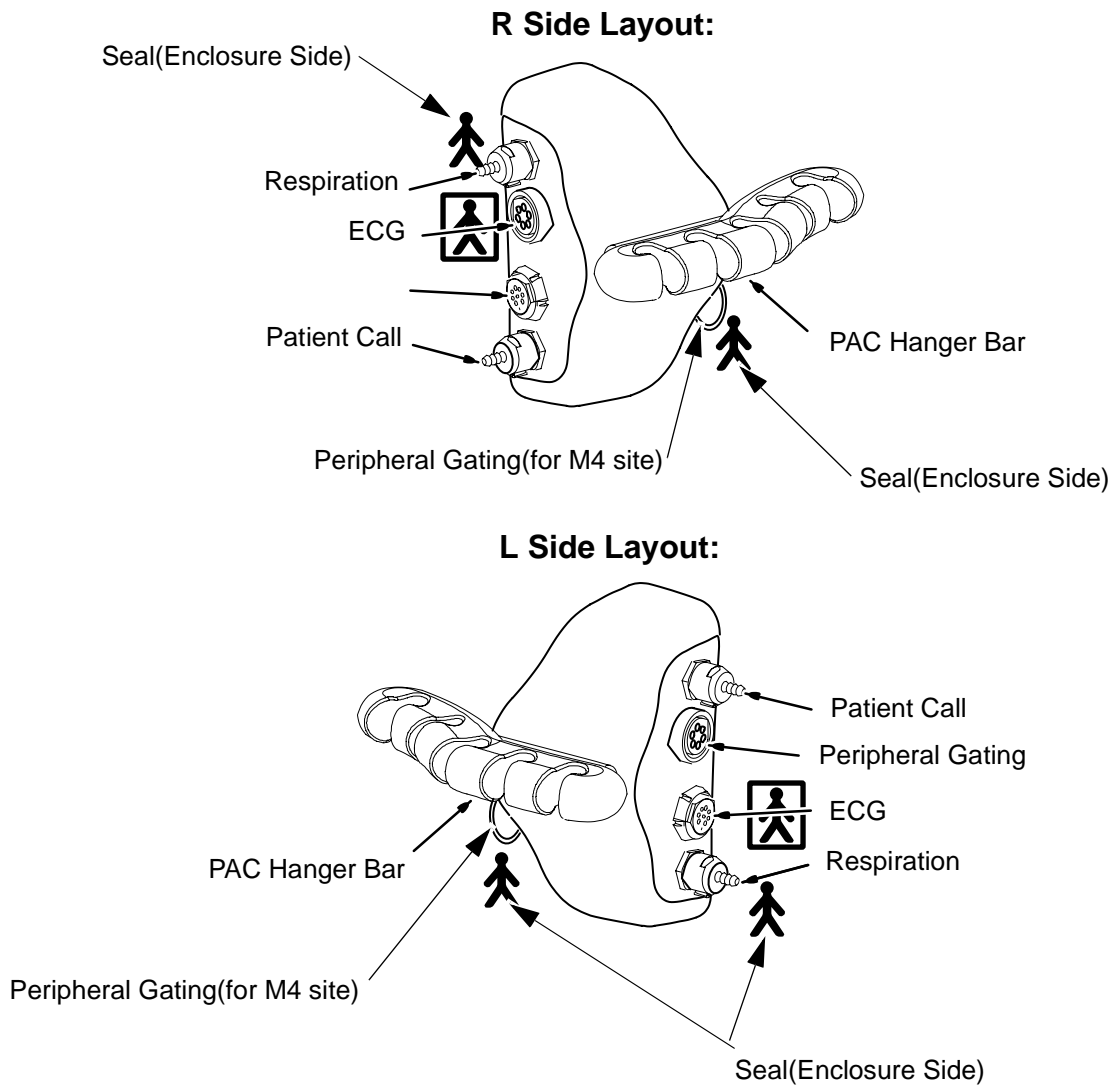
24.Install the another side cover with 8 screws.(Refer to previous page.)

PAC Remote Interface Side:

25.Attach cables as indicated below.

26.Slide PAC Hanger Bar (2221023) into position.

27.Attach the three seals to side cover as illustration.



**INSTALL PAC HANGER BAR AND SEAL
ILLUSTRATION 2-1**