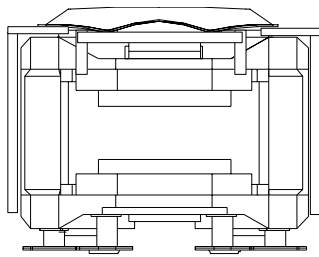


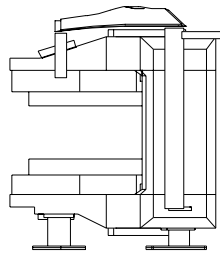
Rev A

1. Magnet Frame Installation

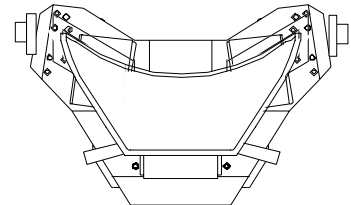
1. Verify that the following frames are already installed before starting the frame installation.



Front View



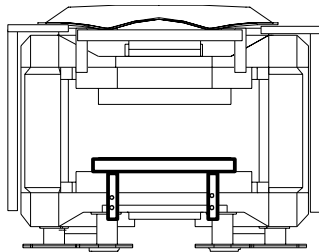
Side View



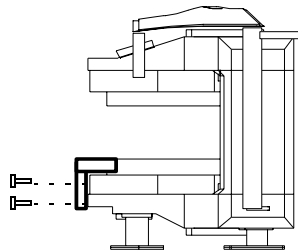
Top View

FRAMES BEFORE STARTING THE INSTALLATION
ILLUSTRATION 1-1

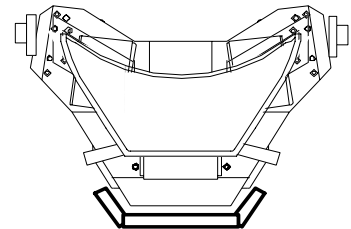
2. Install Front Lower frame with four screws.



Front View



Side View

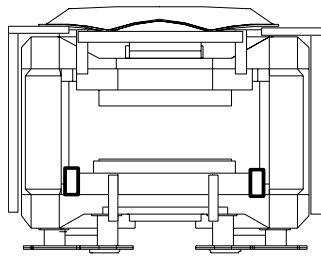


Top View

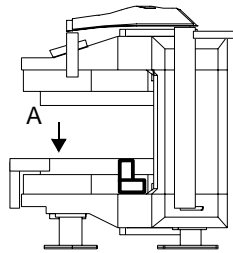
FRONT LOWER FRAME INSTALLATION
ILLUSTRATION 1-2

1. Magnet Frame Installation (continued)

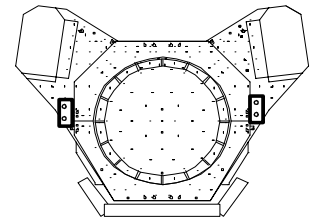
3. Install two side lower brackets with two screws for reach assy.



Front View



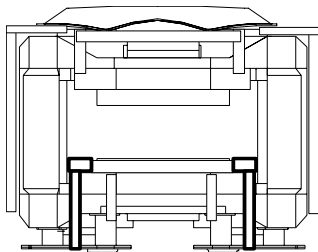
Side View



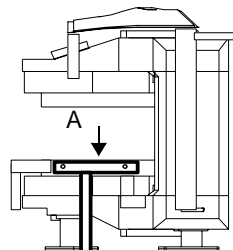
View from A

**SIDE LOWER BRACKET INSTALLATION
ILLUSTRATION 1-3**

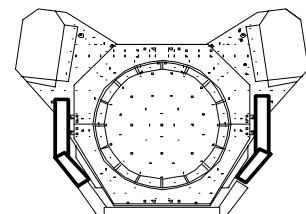
4. Install two side lower frame with two screws for each assy.



Front View



Side View

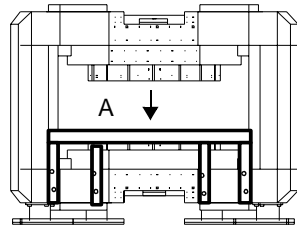


View from A

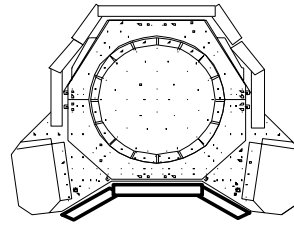
**FRONT LOWER FRAME INSTALLATION
ILLUSTRATION 1-4**

1. Magnet Frame Installation (continued)

- 5. Install Rear lower Frame with eight screws.



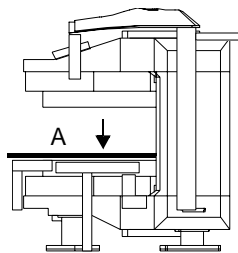
Rear View



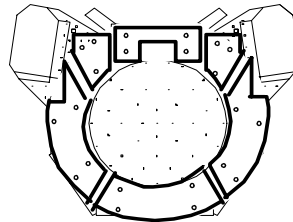
View from A

**REAR LOWER FRAME INSTALLATION
ILLUSTRATION 1-5**

- 6. Install Magnet lower plate with 22 screws.



Side View

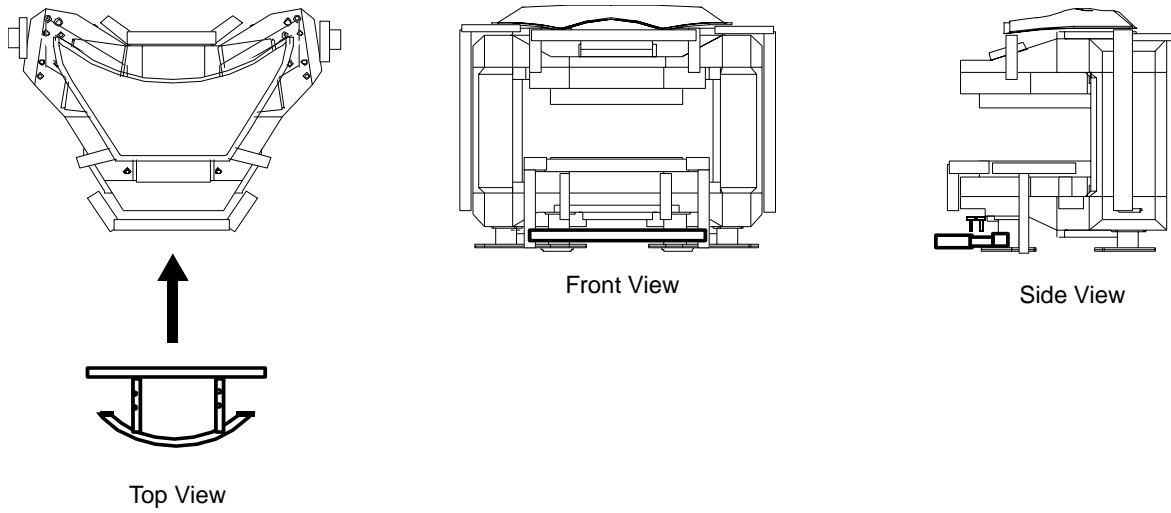


View from A

**MAGNET LOWER PLATES INSTALLATION
ILLUSTRATION 1-6**

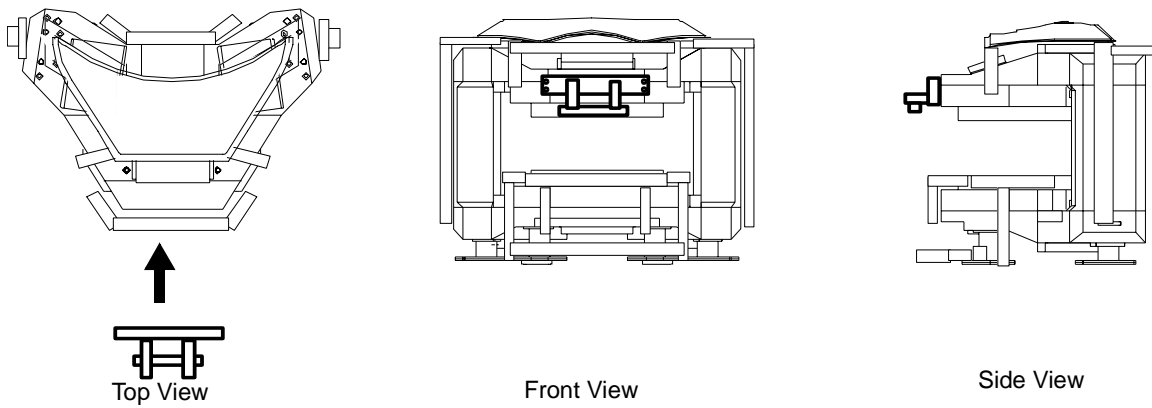
1. Magnet Frame Installation (continued)

7. Install Table Rail to the magnet with four screws.



**TABLE RAIL INSTALLATION
ILLUSTRATION 1-7**

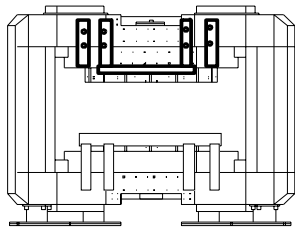
8. Install Front Upper frame with four screws.



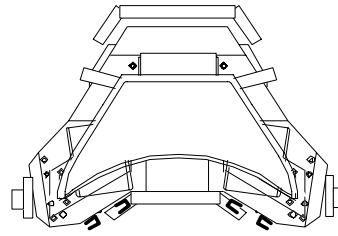
**FRONT UPPER FRAME INSTALLATION
ILLUSTRATION 1-8**

1. Magnet Frame Installation (continued)

9. Install Rear Upper frames with eight screws.



Rear View



Top View

REAR LOWER FRAMES INSTALLATION
ILLUSTRATION 1-9