

COIL CONFIG EDIT

TABLE OF CONTENTS	1
1. Overview	2
2. Surface Coil Registration Check	2
3. New Coil Registration	4
3-1Open Coil Config Manager GUI	4
3-2Add Coil Config (If Coil Name is in the Available Coils)	6
3-3Add Coil Config (If Coil Name is NOT in the Available Coils)	7

Rev 0

1. Overview

This procedure describes how to register new surface coil in Config File.

2. Surface Coil Registration Check

1. Click [New Patient] button.
2. Enter "geservice"..

PATIENT INFORMATION

Accession Number

Patient ID

Patient Name

Birth Date Age

Sex Weight Lb Kg

Rad Refer

Operator Status

Exam Description

History

PATIENT INFORMATION
ILLUSTRATION 1

3. Click "Patient Position"..

PATIENT PROTOCOLS

Head

Neck/Cervical

Chest/Thoracic

Upper Extremities

Abdomen/Lumbar

Pelvis

Lower Extremities

Other

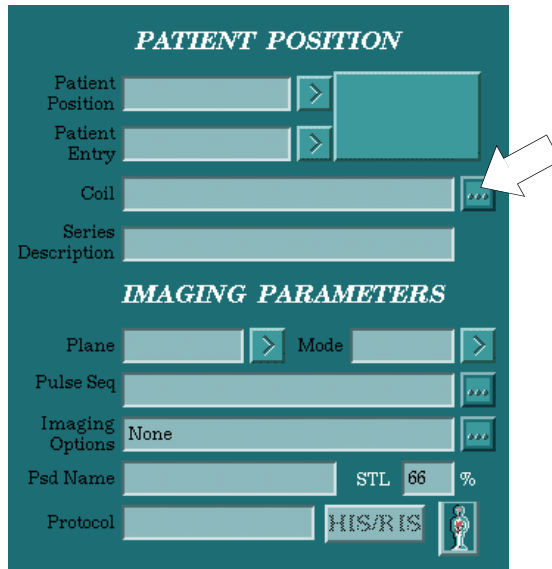
Protocol

PATIENT PROTOCOLS
ILLUSTRATION 2

Rev 0

2. Surface Coil Registration Check (continued)

4. Click [...] beside the Coil. .



PATIENT INFORMATION
ILLUSTRATION 3

5. Click “Surface Coil” and check whether new coil is already registered or not. If the coil is already registard, finish this procedure now. If the coil is not registred, go to Section3 “New Coil Registration”.



COIL NAME
ILLUSTRATION 4

Rev 0

3. New Coil Registration

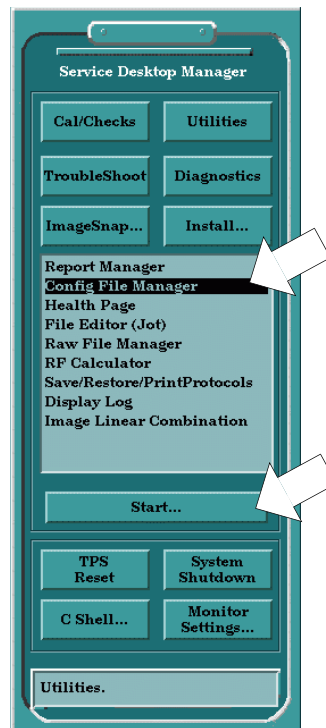
3-1 Open Coil Config Manager GUI

1. Click [Service Desktop]..



**SERVICE DESKTOP
ILLUSTRATION 5**

2. Select "Config File Manager" and Click [Start....]..

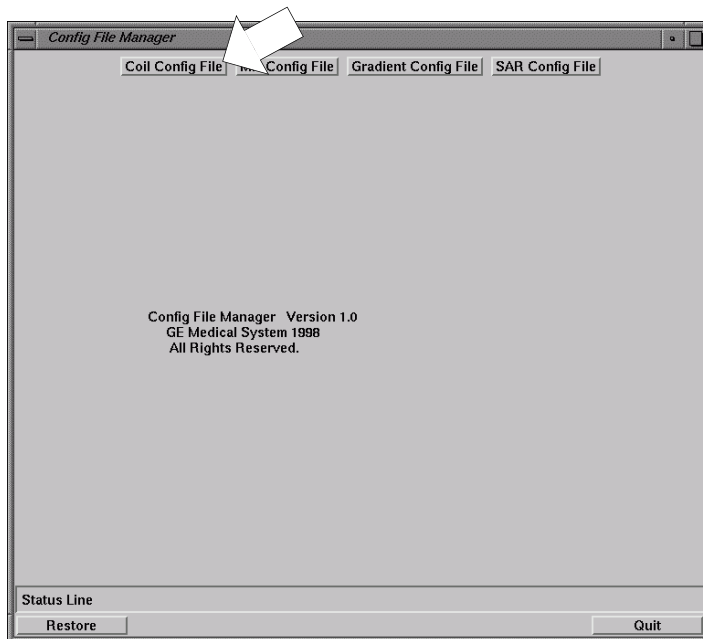


**SERVICE DESKTOP MANGER
ILLUSTRATION 6**

Rev 0

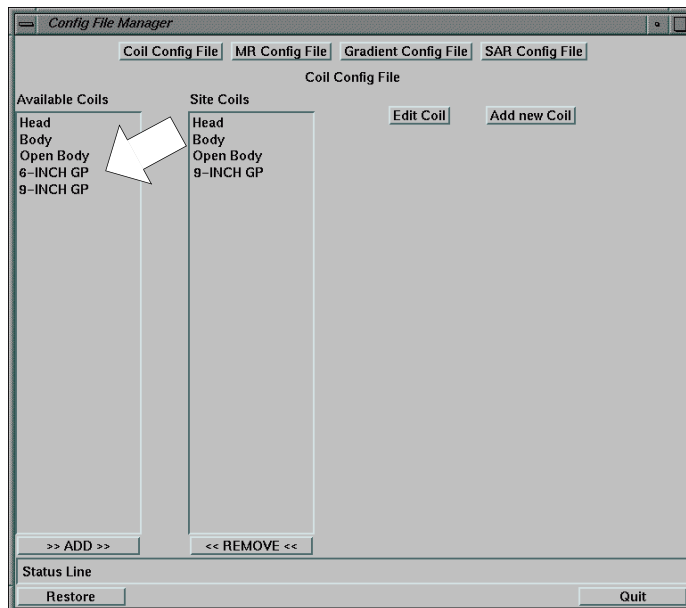
3-1 Open Coil Config Manager GUI (continued)

3. Click [Coil Config File]. .



**CONFIG FILE MANAGER
ILLUSTRATION 7**

4. Check that the Coil Name to be installed is in the “Available Coil List”.
 If Coil Name is in “Available Coil List”, Perform 3-2 ”Add Coil Config(If Coil Name is in the Available Coils)”
 If Coil Name is not in “Available Coil List”, Perform 3-3 ”Add Coil Config(If Coil Name is NOT in the Available Coils)”



**COIL FILE MANAGER
ILLUSTRATION 8**

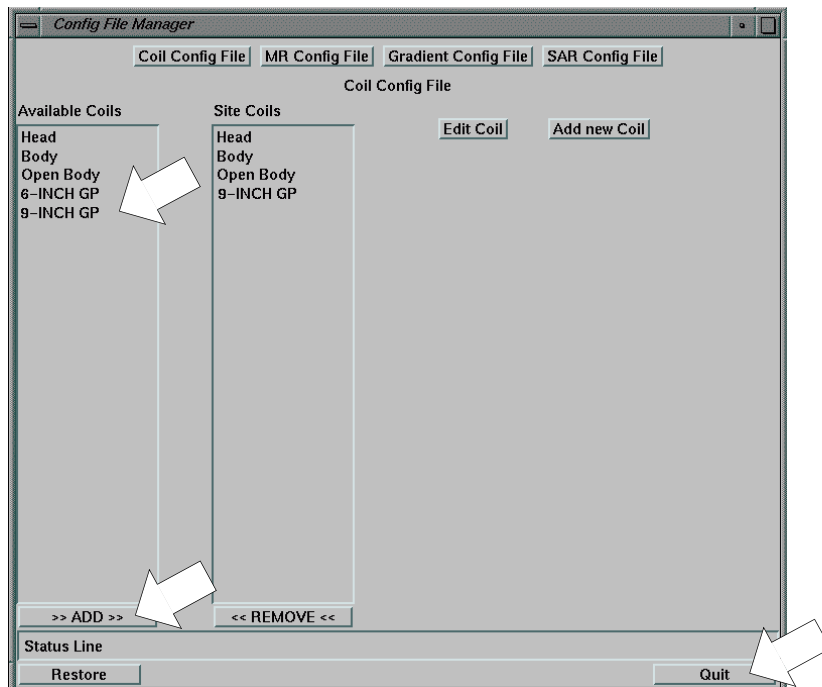
Rev 0

3-2 Add Coil Config (If Coil Name is in the Available Coils)



Select one coil Only. If you want to register more than two coils, it is necessary to reboot the system after one coil is registered. Then, you can register the next coil.

1. Select the new coil from "Available Coils" and click [ADD] button.
2. Verify that the Coil is added in Site Coil..
3. Click [Quit].



CONFIG FILE MANAGER
ILLUSTRATION 9

4. Click [Yes].

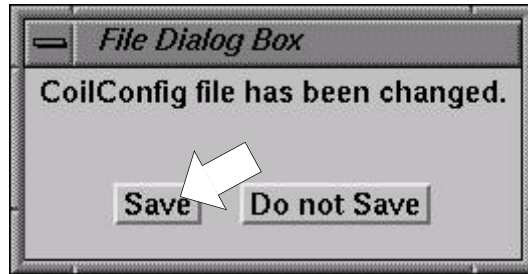


REALLY QUIT
ILLUSTRATION 10

Rev 0

3. Add Coil Config (If Coil Name is in the Available Coils) (continued)

5. Click [Save].



FILE DIALOG BOX
ILLUSTRATION 11

6. It is necessary to reboot the system to update the coil config file.

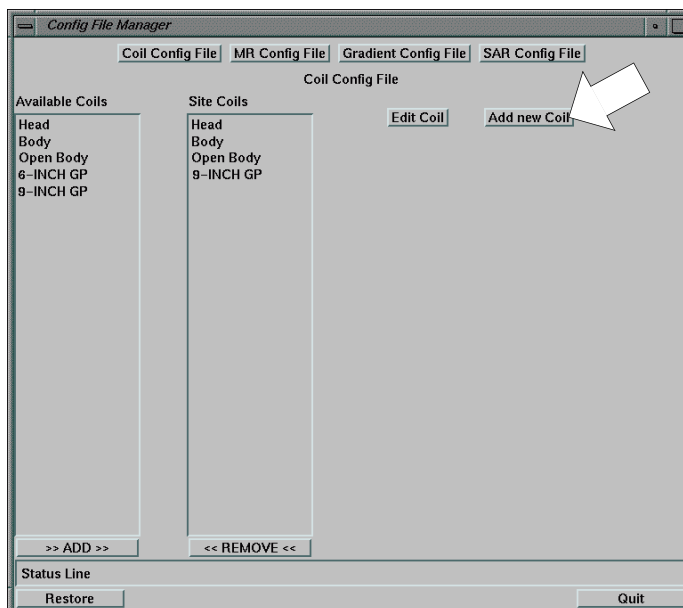
Rev 0

3-1 Add Coil Config (If Coil Name is NOT in the Available Coils)



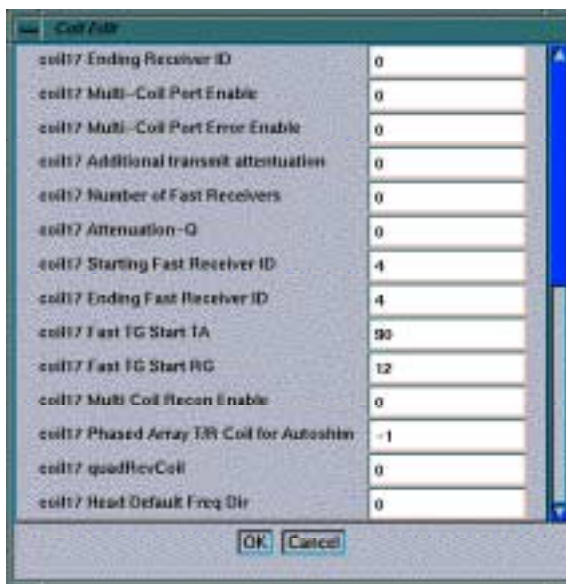
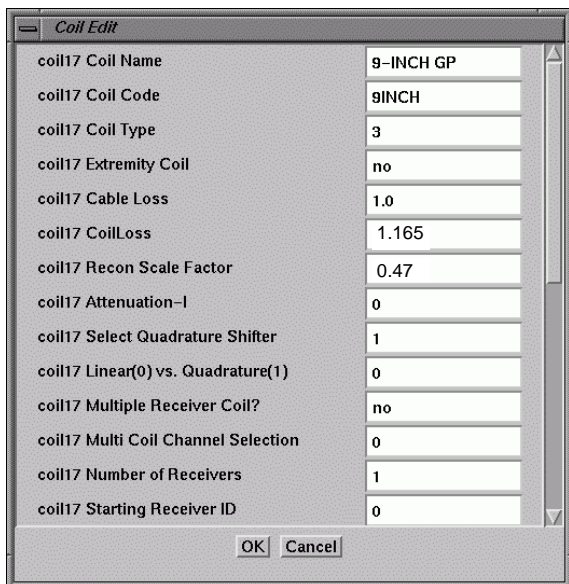
Select one coil Only. If you want to register more than two coils, it is necessary to reboot the system after one coil is registered. Then, you can register the next coil.

1. Select [Add Config File].



COIL CONFIG MANAGER
ILLUSTRATION 12

2. Enter Coil Config parameter according to Coil Config File List.
3. After entering the coil config parameter, click [OK].

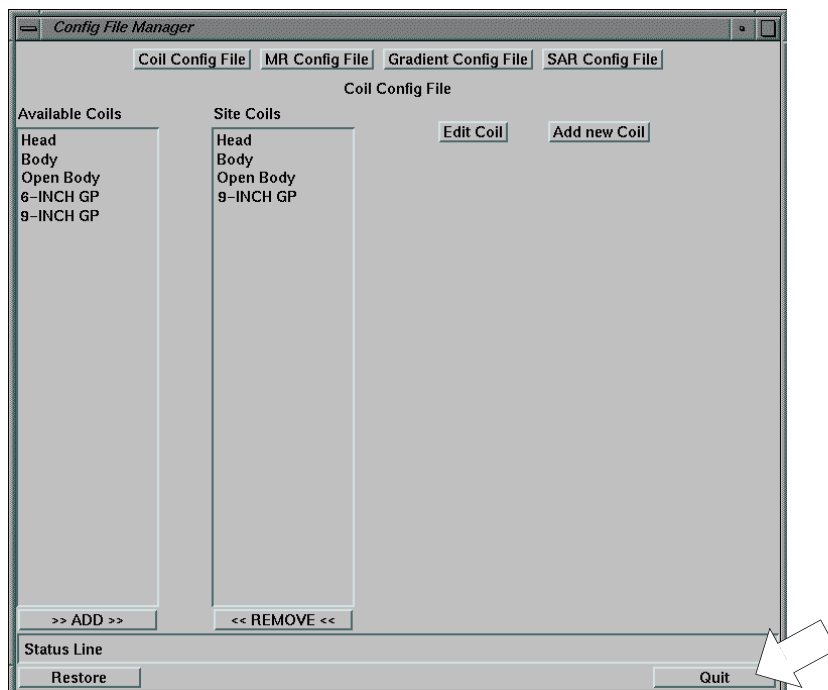


ADD NEW COIL
ILLUSTRATION 13

Rev 0

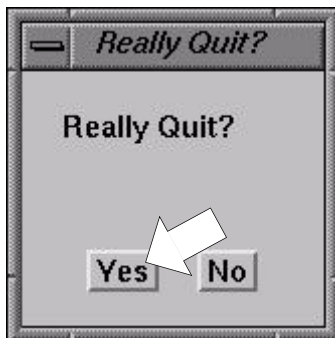
3-1 Add Coil Config(If Coil Name is NOT in the Available Coils) (continued)

4. Click [Quit].



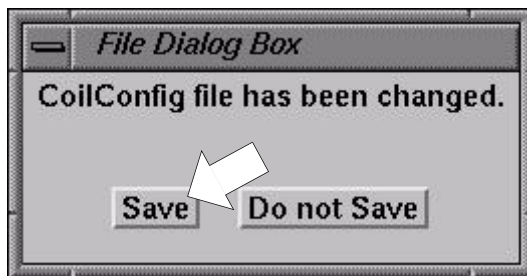
COIL CONFIG MANAGER
ILLUSTRATION 14

5. Click [Yes].



REALLY QUIT
ILLUSTRATION 15

6. Click [Save].



FILE DIALOG BOX
ILLUSTRATION 16

7. It is necessary to reboot the system to update the coil config file.

Revision History

Rev	Date	Auther	Primary Reasons For Change
0	Feb 9, 2001	Y. Masumo	Initial Release