

# **FMI ADMINISTRATIVE INFORMATION FMI No: 67602**

**FMI Title : Magnet Interface Replacement and MFO1 M4 Patch Installation  
for Signa Ovation System**

<b>FMI TYPE</b>	<b>CHARGE CODES</b>	<b>IMPLEMENTATION DATES</b>
<input type="checkbox"/> Mandatory Safety <input checked="" type="checkbox"/> Mandatory <input type="checkbox"/> Mandatory on Request	<b>GEMS-AM:</b> <b>GEMS-E:</b> <b>GEMS-A:</b>	<b>Issued Date: T.B.D</b>  <b>Closed Date: T.B.D</b>

**Staged FMI** **Customer List** provided by FMI Administration. If you identify additional units within effectivity range, but they are not shown on the customer list, contact FMI Administration in your Pole

**Parts** and any special tools are furnished automatically. To address shortages and ordering exceptions, contact FMI Administration in your Pole.

**Parts Ordering:** GEMS-Americas, Contact your Region logistics coordinator  
 GEMS-Europe, Order FMI kits from GPO/EPL Buc  
 GEMS-Asia, Contact your Region logistics coordinator

**NO Parts** are required to complete this FMI.

**Batch with FMI(s) :** \_\_\_\_\_  
 To minimize costs, combine implementation of this FMI with FMI's listed for all customers where the effectivity is the same (Please see your customer lists).

**Non-Staged FMI : No Customer List is provided.** Each service location must identify affected units and place part orders as indicated in the Special Instructions.

## **Technical Support**

<b>GEMS-Americas</b>	<b>GEMS-Europe</b>	<b>GEMS-Asia</b>
GE Medical Systems InSite Center (414) 524-5637 800-321-7937 Milwaukee, WI 53201, USA	OnLine Center Europe Phone: 33 (0) 1 01 30 83 13 00 Fax: 33 (0) 1 01 30 70 99 70	OnLine Center Asia Phone: 81-426-48-2940 Fax: 81-426-48-2905

**Special Instructions:**

**Unit Tracked: See Effectivity**

**FMI Instruction Part No. : 2346997**

**Do NOT leave unsecured on site**

# ***FMI*** Completion Certification Report

<b>Mail To</b>		
<b>GEMS – Americas</b>	<b>GEMS – Europe</b>	<b>GEMS – Asia</b>
G.E. Medical Systems Attn: FMI Admin.W-523 P.O. Box 414 Milwaukee, WI. 53201	GEMS–Europe FMI Admin. 322 BP 34 F78533 Buc Cedex, France	Send to your Country FMI or Service Administrator

**Magnet Interface Replacement and MFO1 M4 Patch Installation**

FMI No. : 67602      FMI Title: for Signa Ovation System

Customer Full Name: \_\_\_\_\_

Number and Street Address: \_\_\_\_\_

City and Country: \_\_\_\_\_

Country Code

Site Number

System I.D.

Unit Tracked : TCU Assy				
Model Number	Serial Number	FMI Cop. Code	Service Hours	
			Labor	Travel
2276937				

**FMI Completion Codes**

- 1) Modification Complete or previously Modified
- 2) FMI not required per FMI instruction.
- 3) Not modified. Unit in storage. FMI kit returned to stock.
- 4) Modification refused or equipment altered. Customer signature and title required.
- 5) Unit location unknown or unit not in area. Product Location notified.

**Customer Refusal**

Customer Signature – Title

Send original to Local FMI Coordinator  
Send copy to GEMS–Am, W 523

Service Signature

Employee No.

Installer

Comments: \_\_\_\_\_

\_\_\_\_\_

\_\_\_\_\_

## Magnet Interface Replacement and MFO1 M4 Patch Installation for Signa Ovation System

### **EFFECTIVITY**

#### **GEMSE:**

All Signa Ovation TCU Assy. model number 2276937 with the following serial numbers:  
801205YM6, 813955YM2

#### **GEMSAM:**

All Signa Ovation TCU Assy. model number 2276937 with the following serial numbers:  
801208YM0, 801209YM8, 813943YM8, 813944YM6, 813945YM3, 813946YM1, 813947YM9, 813948YM7,  
813949YM5, 813950YM3, 813951YM1, 813952YM9, 813953YM7, 813954YM5, 813956YM0, 813957YM8,  
813958YM6, 813959YM4, 813960YM2, 837346YM6, 837347YM4, 837350YM8, 837351YM6, 837352YM4

### **PURPOSE**

Bug fix and improvement of software quality for MFO M4 Software

After replacing Magnet IF, table motion range of lateral direction will be changed. Refer to the procedure for detail.

### **FURNISHED MATERIALS**

FMI kit 2341838, consisting of the following:

<b>ITEM</b>	<b>PART NUMBER</b>	<b>DESCRIPTION</b>	<b>Qty.</b>
1.	2345556	M4 Patch CDROM	1
2.	2254366-2	Magnet IF Board	1
3.	2346997	FMI67602 Instruction	1

### **Required Tools**

Standard Service Kit

OS CD-ROM (2256092-3 IRIX 6.5 OS)

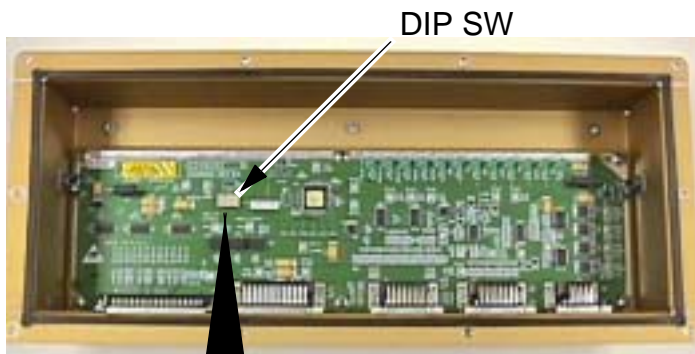
Signa Ovation Service Methods (2283085 Rev4 or higher)

### 1. Magnet Interface Replacement

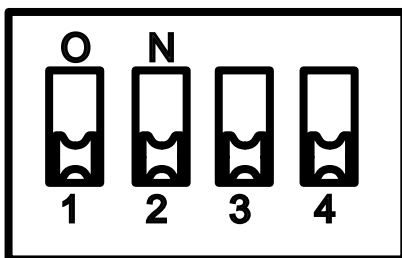
**Note**

For new magnet interface unit (2254366-2), provide a bank of 4 dip switches including a function to select logic of OpenSpeed and Ovation, and this unit is keeping compatibility of OpenSpeed and Ovation by dip switch setting. Differential of logic is a signal condition for collision only.

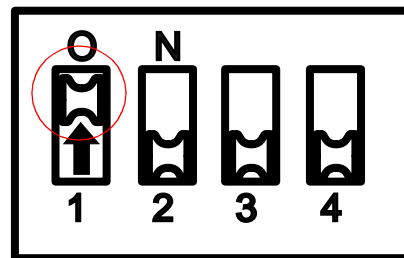
- 1. Before installing the new unit, open the top cover of the New Magnet I/F unit by removing the 10 screws.
- 2. Slide switch 1 to ON position. Switch 2, 3 and 4 are OFF position.
- 3. Restore top cover of the magnet I/F unit with 10 screws.



**Magnet Interface Unit  
(Removed top cover)**



**Factory (Default) Setting**



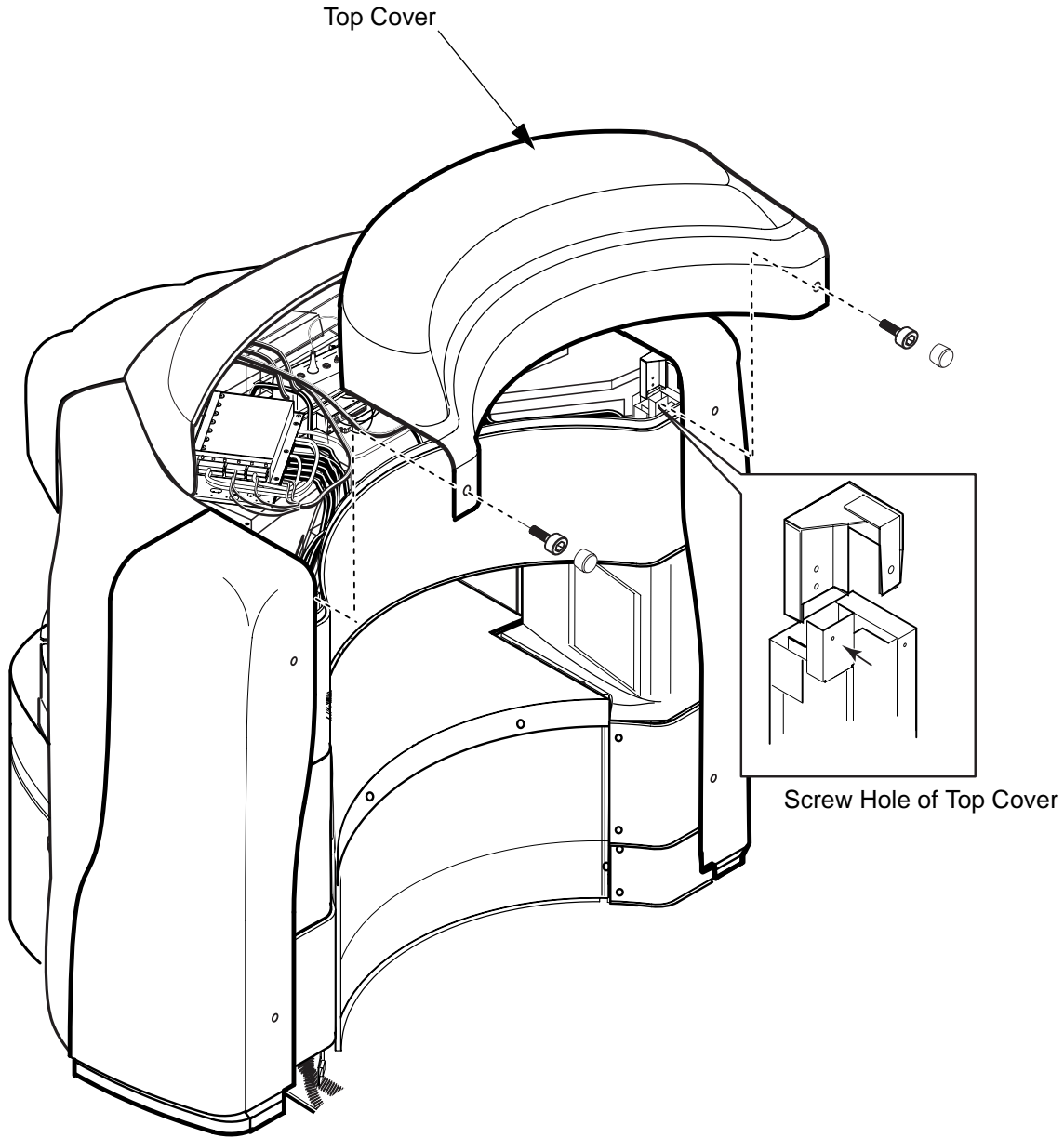
**Switch 1 should be in the ON position,  
2,3,4 are in the OFF position.**

**DIP SW SETTING OF NEW MAGNET INTERFACE UNIT  
ILLUSTRATION 1**



**1. Magnet Interface Replacement (Continued)**

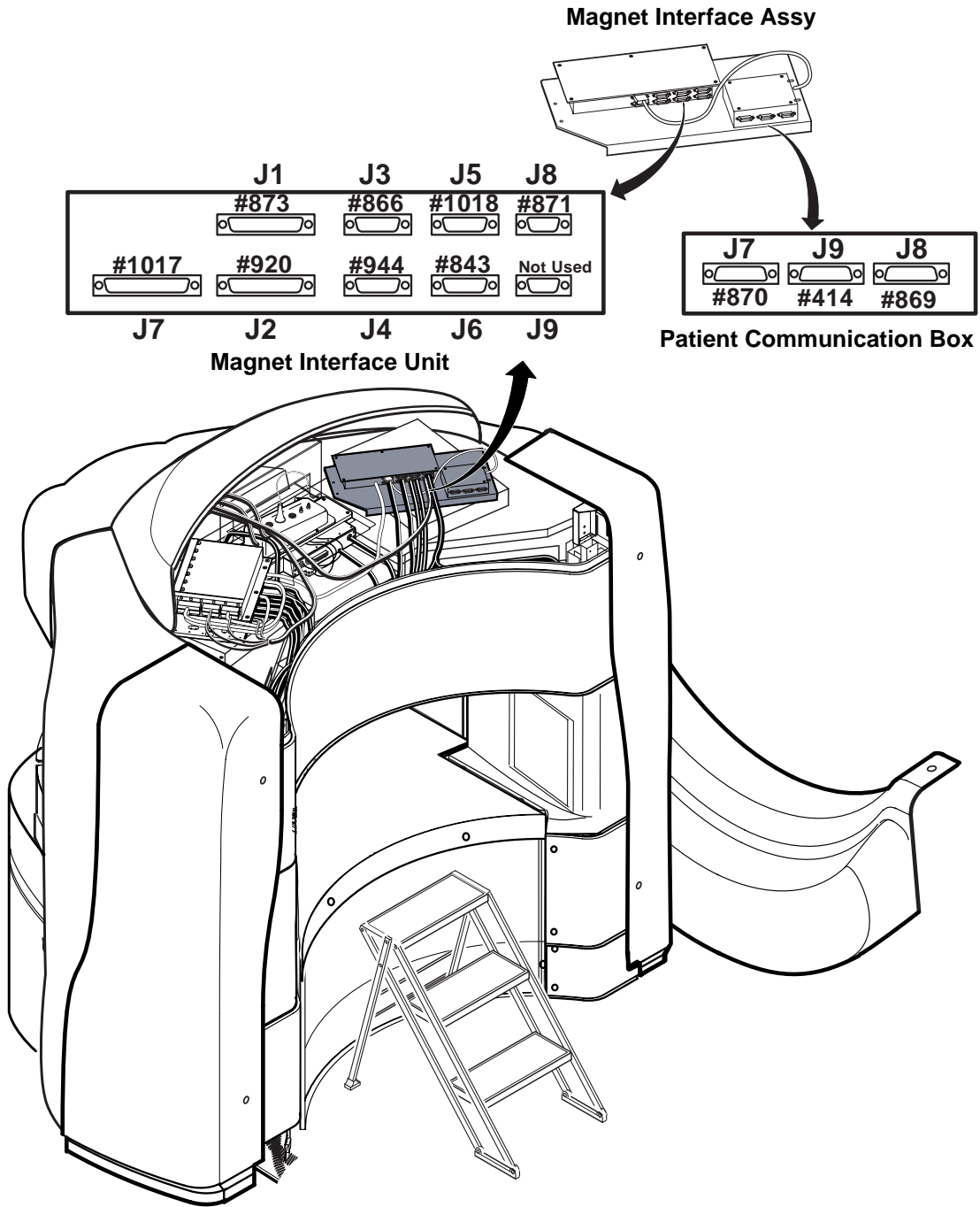
- 4. Remove the Top Cover by removing 2 screws and 2 caps.



**MAGNET INTERFACE ASSY REPLACEMENT  
ILLUSTRATION 2**

**1. Magnet Interface Replacement (Continued)**

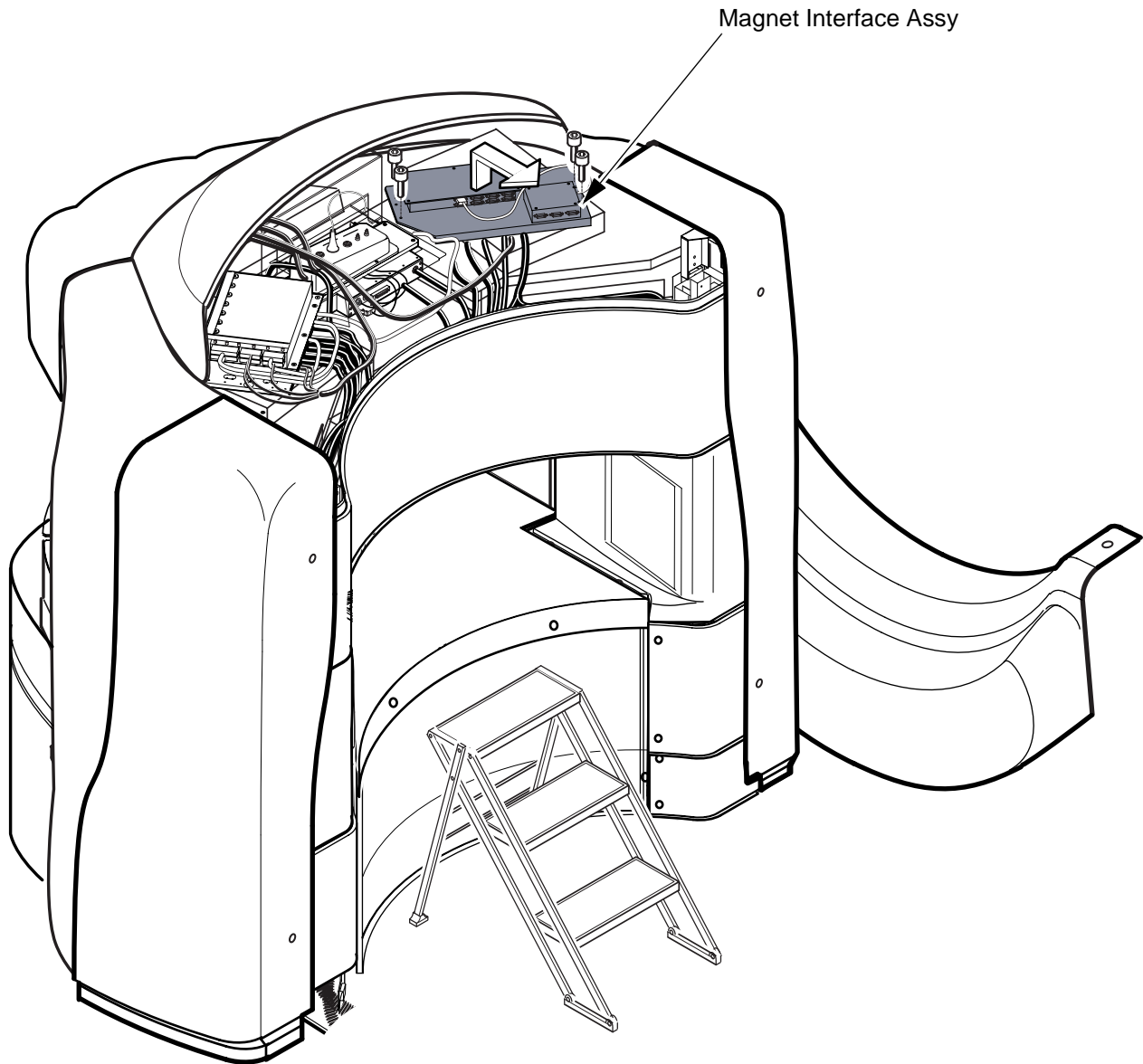
- 5. Disconnect the all cables from the magnet interface assy.



**MAGNET INTERFACE ASSY REPLACEMENT  
ILLUSTRATION 3**

**1. Magnet Interface Replacement (Continued)**

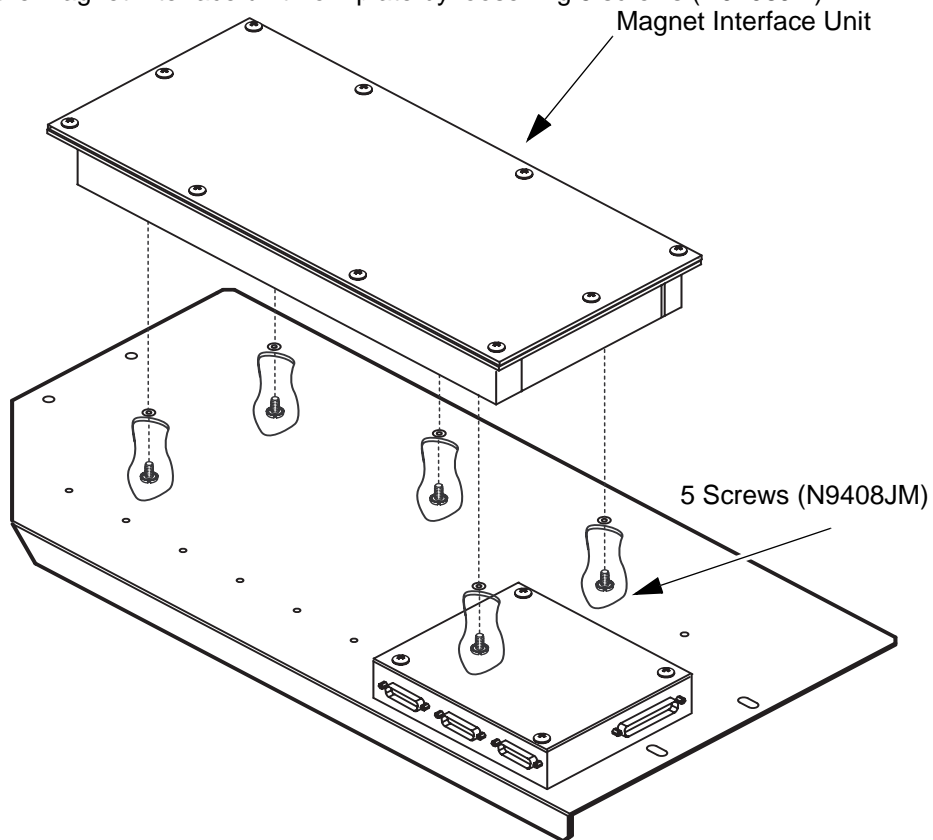
6. Remove the magnet interface assy from the magnet top by loosening 4 screws.



**MAGNET INTERFACE ASSY REPLACEMENT  
ILLUSTRATION 4**

### 1. Magnet Interface Replacement (Continued)

7. Remove the magnet interface unit from plate by loosening 5 screws (N9408JM).

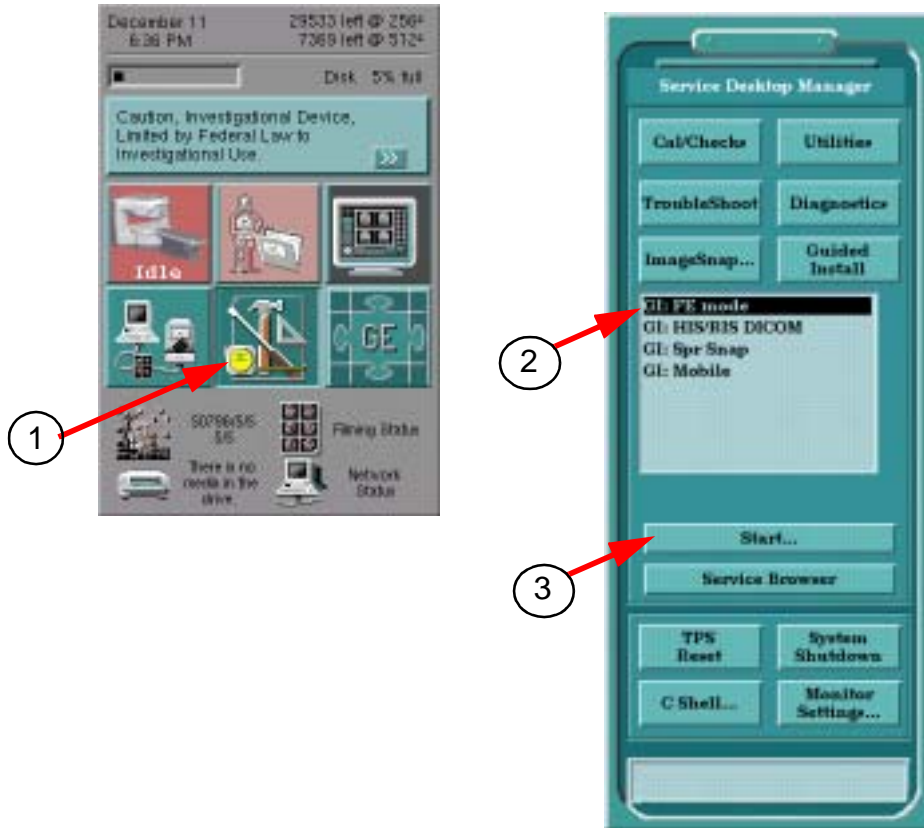


**MAGNET INTERFACE ASSY REPLACEMENT  
ILLUSTRATION 5**

8. Install new Magnet Interface Board by the reverse order of removal.

### 2.Patch Software Installation

1. Select [Service Desktop] Icon.
2. Select "GI: FE mode".
3. Click [Start].

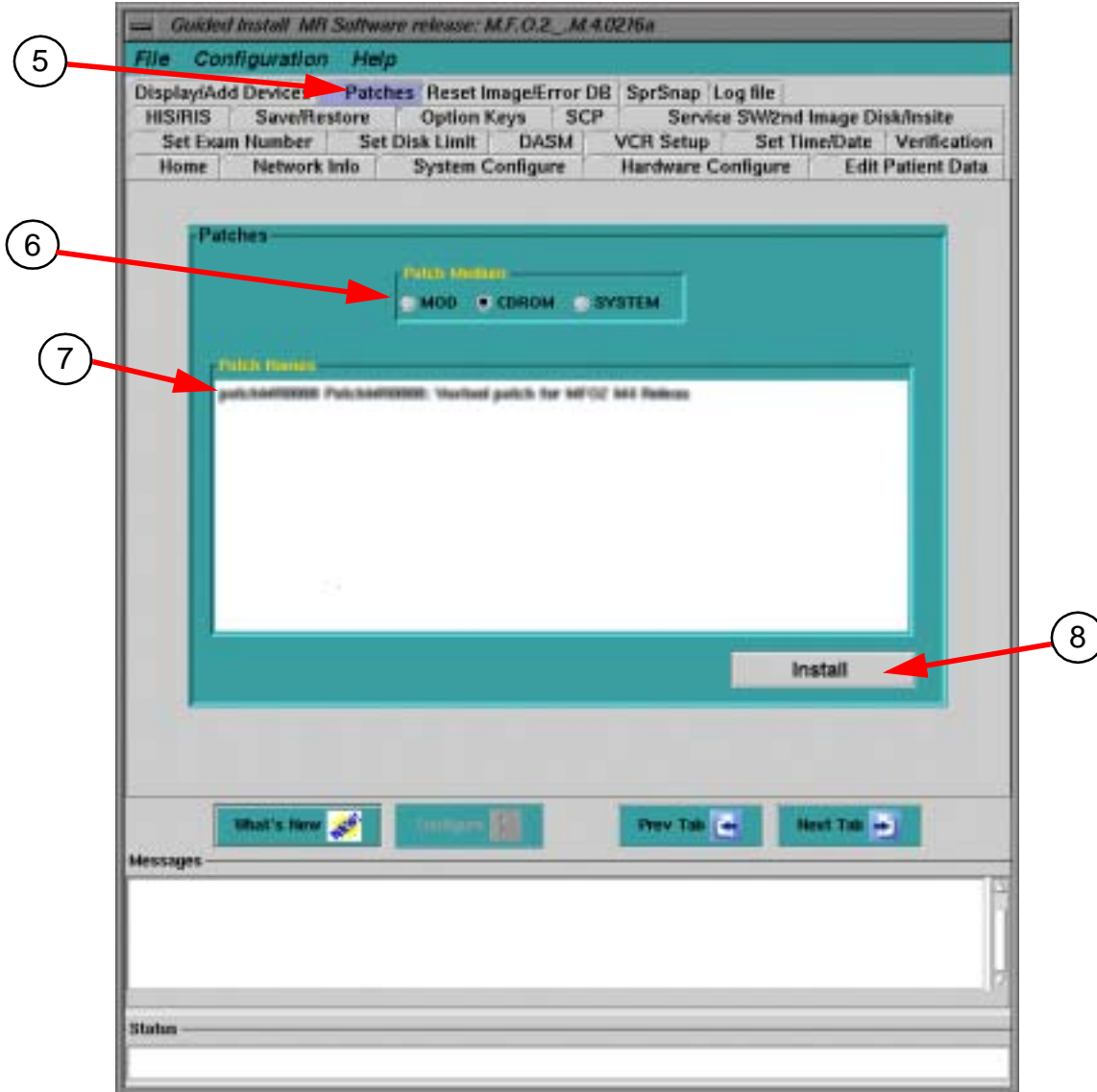


SERVICE DESKTOP  
Illustration 2

4. Enter "operator" and hit [Return] key.  
Password: **operator** [Return]

**2.Patch Software Installation (Continued)**

5. Guided Install Screen comes up. Click [Patch] tab.
6. Select Patch CD-ROM.
7. Select Patch Name.
8. Click [Install]. Patch Software will be installed.



**GUIDED INSTALL SCREEN**  
ILLUSTRATION 6

9. Select "System" from patch medium. Verify that installed patch name is displayed in the patch name area.
10. Select "File" and select "Quit". Select "OK" at the message.
11. Reboot the System.

**3.Functional Check**

1. Move the Table position to 0 degree, -25 degree, and 25 degree.  
Check that the Cradle lateral movement satisfies the following specification at each Table position.

After (MFO) SW1 ON Position	-25 degree	←—————→					
	0 degree	←—————→					
	+25 degree	████████████████				←—————→	

←—————→ :Motion range of table

████████ :Diplayed  error message on the magnet display.

2. Perform SPT Head SNR and verify that the result satisfies the specification.  
(Signa Ovation Service Methods/Installation/9th day/SPT Head Quick Check)