

SERVICE NOTES

Guided Install Problem with Signa Ovation System

Problem:

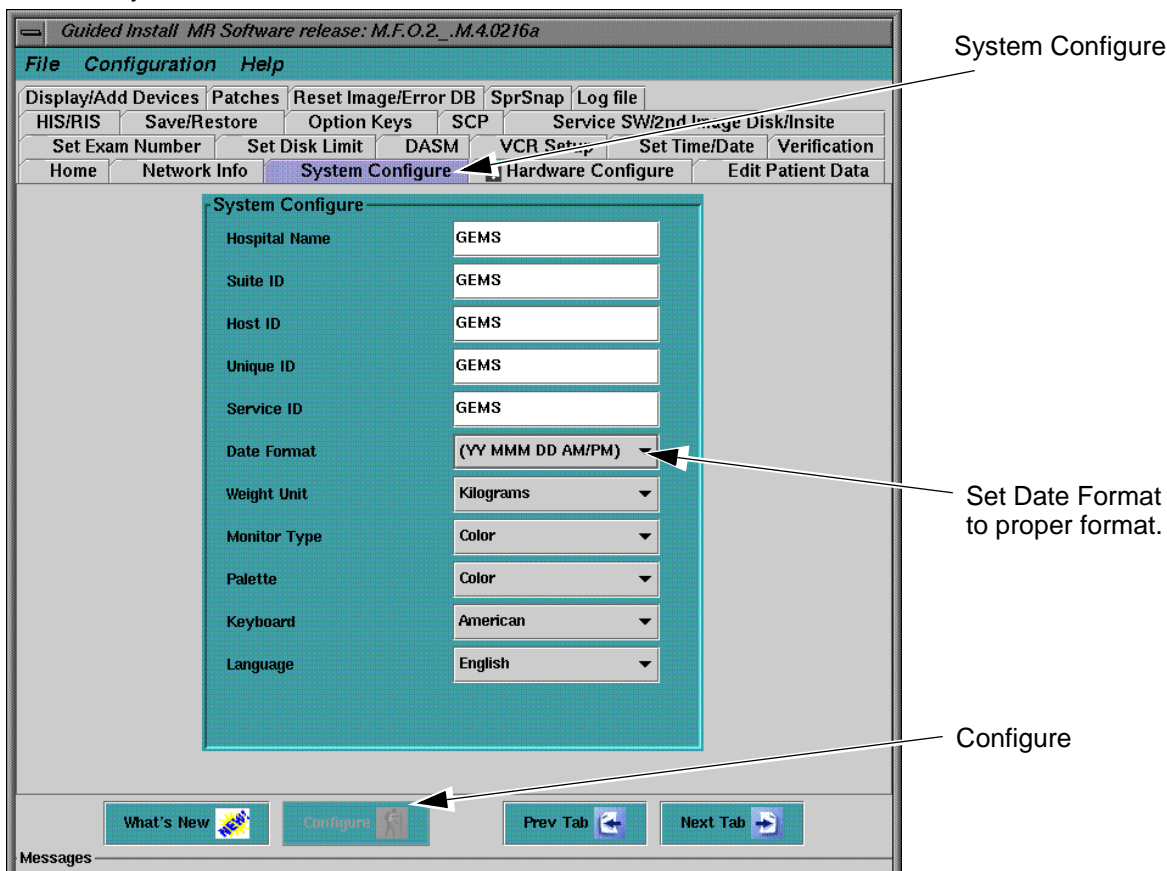
When parameter of Guided Install is updated, following problem might occurs.

- “Date Format” might be changed to European Format.
- “Iso Vector Z” might be changed to “CX/LCC Magnet”.
- “Magnet Enclosure” will become blank.

Solution of Date Format:

Perform the following procedure when the date format is changed.

1. Select [**Service Desktop**] icon.
2. Select [**Guided Install**] and select “**GI: FE Mode**”. Then, Click [**Start**].
3. A C-Shell will open and ask for root password (“**operator**” [**Enter**] is the default).
The Install GUI will load and start.
4. Select [**System Configure**] Tab.
5. Set “Date Format” to proper format.
6. Click [**Configure**].
7. Exit the install GUI by selecting “**File**” then “**Quit**”.
8. Reboot the system.

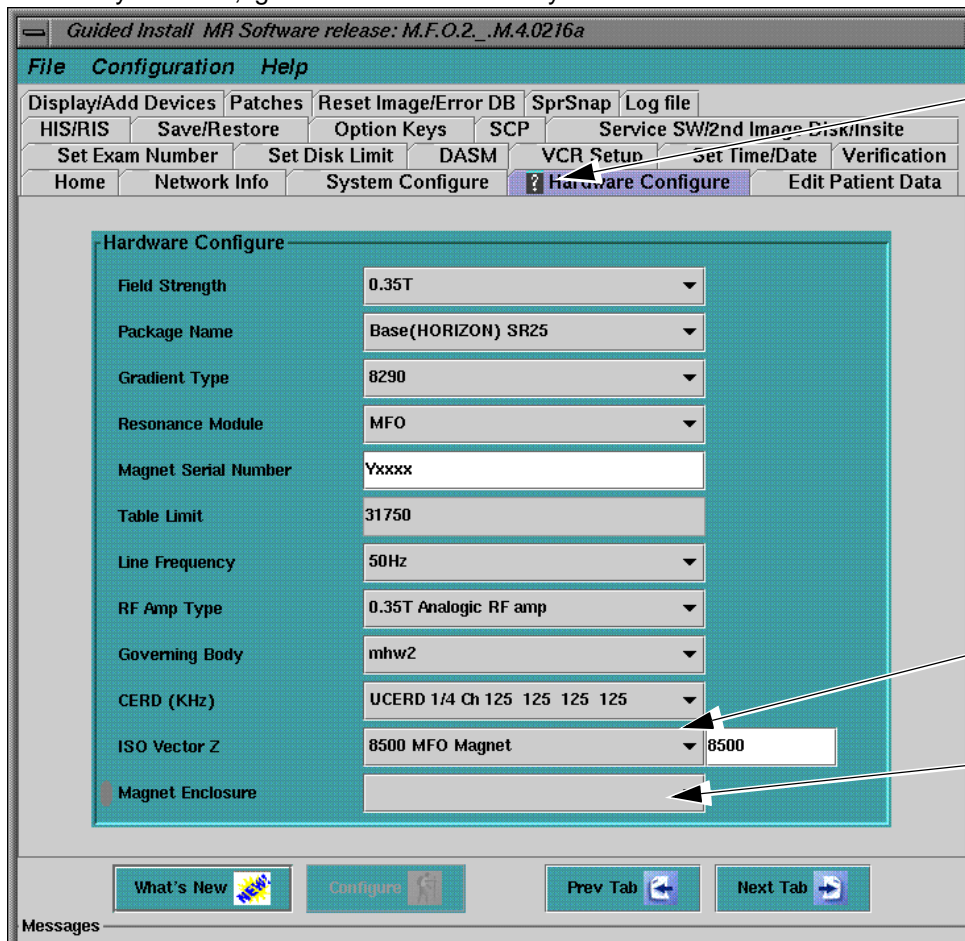


GUIDED INSTALL1
Illustration 1

SERVICE NOTES

Solution of Iso Vector Z and Magnet Enclosure:

Even though "Iso Vector Z" is changed to "CX/LCC Magnet" and/or "Magnet Enclosure" becomes blank, they won't affect to the system. So, ignore them. Reboot the system.



Hardware Configure

"Iso Vector Z" is changed to "CX/LCC Magnet".

Magnet Enclosure becomes blank.

GUIDED INSTALL1
Illustration 2

Yutaka Masumo
GEYMS TP Gr. -MR