

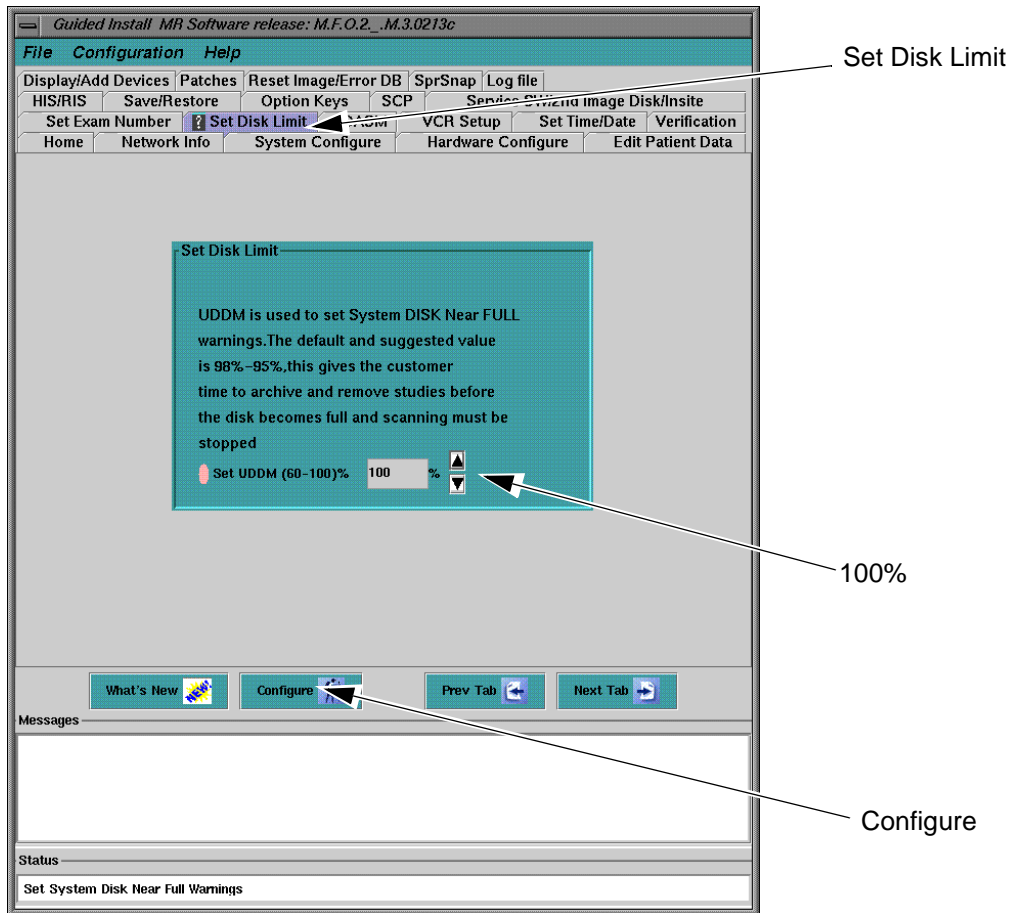
## Disk Limit Setting for MFO2 Software

### Overview:

The following Error Message comes up after installing MFO2 software when using Octane2 with dual 9 GB HD.  
"Please remove images because the disk is nearly full."  
To solve this problem, it is necessary to set the Disk Limit to "100%".

### Procedure:

1. Select [**Service Desktop**] Icon.
2. Select [**Guided Install**] and select "**GI: FE Mode**". Then, Click [**Start**].
3. A C-Shell will open and ask for root password ("**operator**" [**Enter**] is the default).  
The Install GUI will load and start.
4. Select [**Set Disk Limit**] Tab.
5. Set Disk limit to "**100%**".
6. Click [**Configure**].
7. Exit the install GUI by selecting "**File**" then "**Quit**".



GUIDED INSTALL  
Illustration 1