

Problem Description Summary:

MR_882: Nightly self-test fails when iGCI (part nr 452211797195) is installed the C781/787 gradient amplifier.

Problem Description Details:

Problem ID:	MR_882	Date:	30-Sep-2009	Author:	Frank Bergmans
Applicable systems:	Gyroscan T5, Gyroscan ACS, Gyroscan NT, Intera, Achieva, Panorama HFO				
Software release:	≥R261	Problem type:	hardware	Sub System:	Gradient Amplifier

The nightly self-test fails, when iGCI (part nr 452211797195) is installed the C781/787 gradient amplifier.

Part of the log file, which shows the error:

```
AEMXMN(log): 03:03:07.838::execute_test_scan:executing scan
STT(GCI): GCI analog wrap (II):, expected: -6.669, tolerance: 0.5, read: 0.008845
STT(GCI): GCI analog wrap (II):, expected: -6.669, tolerance: 0.5, read: 0.008632
STT(GCI): GCI analog wrap (II):, expected: -6.669, tolerance: 0.5, read: 0.008693
STT(GCI): channel X is not reset to default mode.
STT(GCI): channel Y is not reset to default mode.
STT(GCI): channel Z is not reset to default mode.
STT(GCI): channel X is not reset to default mode.
STT(GCI): channel Y is not reset to default mode.
STT(GCI): channel Z is not reset to default mode.
STT(GCI): board access = 'PASSED', model 117 9719.5' fpga '0000.00de
STT(GCI): dig. wrap around = 'PASSED'
STT(GCI): analog wrap around = 'FAILED'
STT(GCI): power supply = 'PASSED'
STT(GCI): power supply -13.0 V = 'PASSED'
STT(GCI): power supply 3.3 V = 'PASSED'
STT(GCI): power supply 5.0 V = 'PASSED'
STT(GCI): power supply 13.0 V = 'PASSED'
STT(GCI): amplifier mode = 'FAILED'
AESCANNMON: Scanner message received, acquisition running.
STT(GCI): Error found in gradient axis: X
```

Problem Cause:

The iGCI board cannot communicate with the gradient amplifier while the LCC-II is in standby during the nightly self-test.

Problem Solution:

The temporary work around is to disable the Gradient in the Self-test Configuration. As soon as a 452211797196 board or software solution is available the field will be informed. With introduction of the #6 board or eventual software solution the Gradient self-test must be enabled again.

Procedure:

Login to FSF

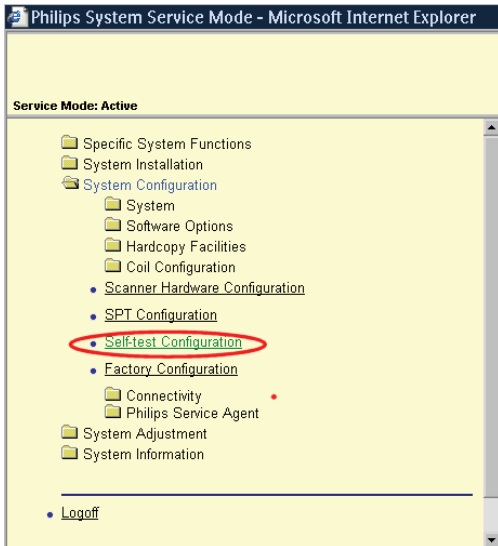
Select Self-test Configuration.

CSIP Level 1 (09.0)

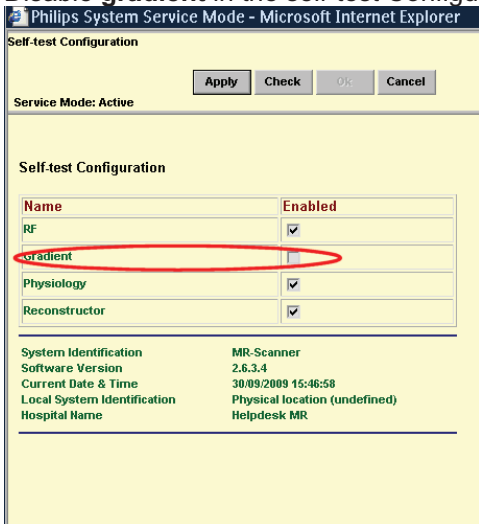
This document and the information contained in it is proprietary and confidential information of Philips Medical Systems ("Philips") and may not be reproduced, copied in whole or in part, adapted, modified, disclosed to others, or disseminated without the prior written permission of the Philips Legal Department.

(c) 2009 Koninklijke Philips Electronics N.V.

ALL RIGHTS RESERVED



Disable **gradient** in the self-test Configuration



select Apply, OK
 confirm the question : ' do you want to activate the changes in the system?' with Yes.
 Select OK to activate the new settings.
 Logout of FSF

Proprietary Notice CSIP Level 1:
 This document and the information contained in it is strictly reserved for current Philips Medical Systems ("Philips") personnel, Philips licensed representatives and Philips customers who have purchased a valid service agreement for use by the customer's designated in-house service employee on equipment located at the customer's designated site. Use of this document by unauthorized persons is strictly prohibited. This document must be returned to Philips when the user is no longer licensed and in any event upon Philips' first written request.

Liability / Warranty Disclaimer:
 Philips provides this DOCUMENT without warranty of any kind, implied or expressed, including, but not limited to, the implied warranties of merchantability and fitness for a particular purpose. Philips has taken care to ensure the accuracy of this document. However, Philips assumes no liability for errors or omissions and reserves the right to make changes without further notice to any products herein to improve reliability, function, or design. Philips may make improvements or changes in the product(s) or program(s) described in this document at any time.

CSIP Level 1 (09.0)

This document and the information contained in it is proprietary and confidential information of Philips Medical Systems ("Philips") and may not be reproduced, copied in whole or in part, adapted, modified, disclosed to others, or disseminated without the prior written permission of the Philips Legal Department.

(c) 2009 Koninklijke Philips Electronics N.V.
 ALL RIGHTS RESERVED