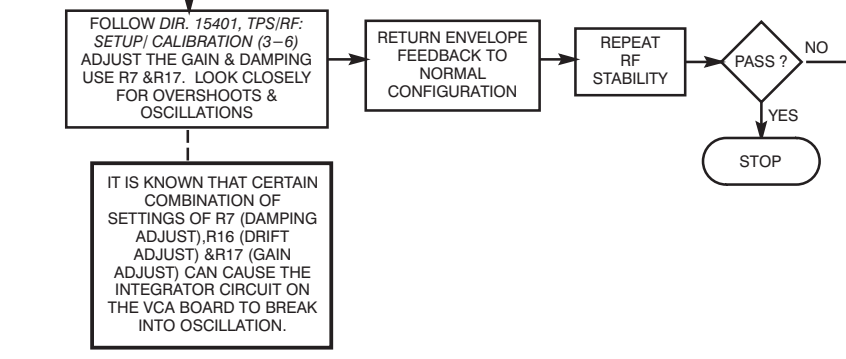
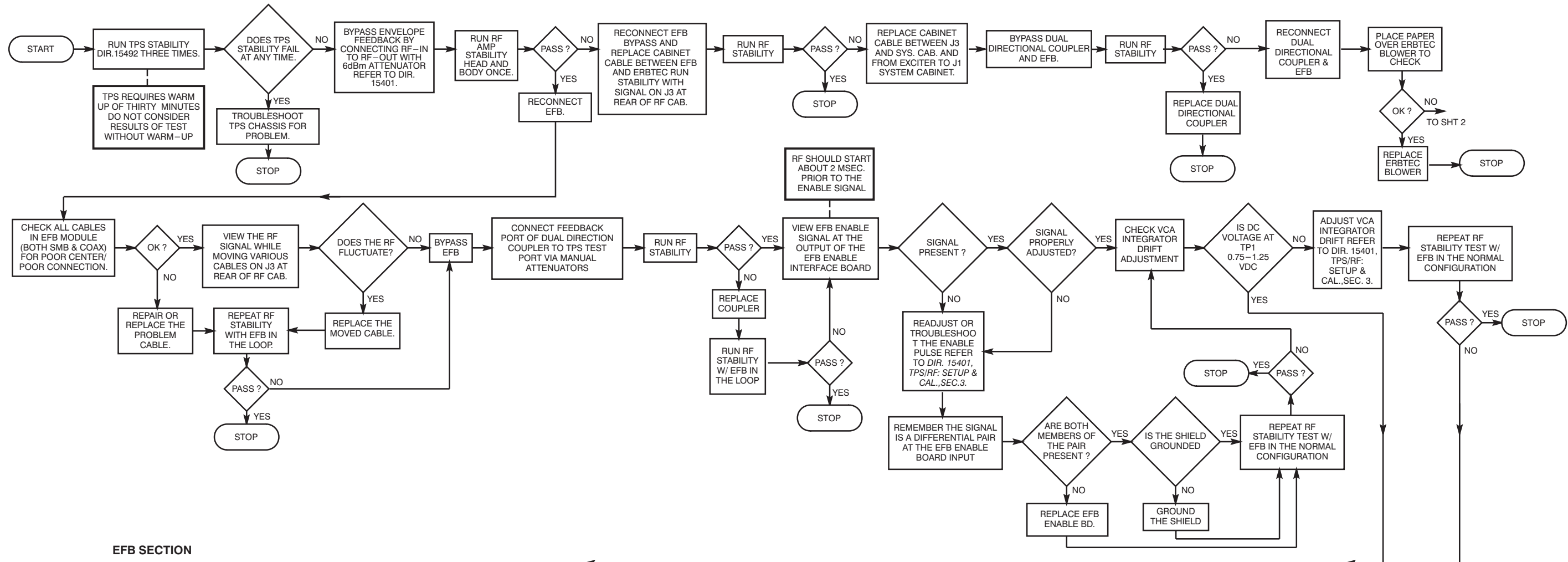
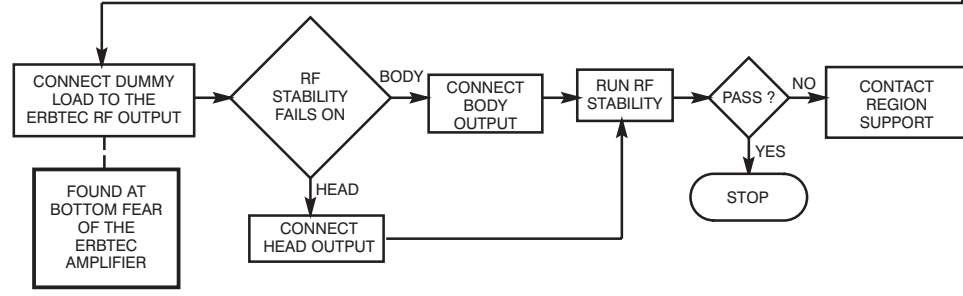


2-5 RF INSTABILITY TROUBLESHOOTING FLOWCHART



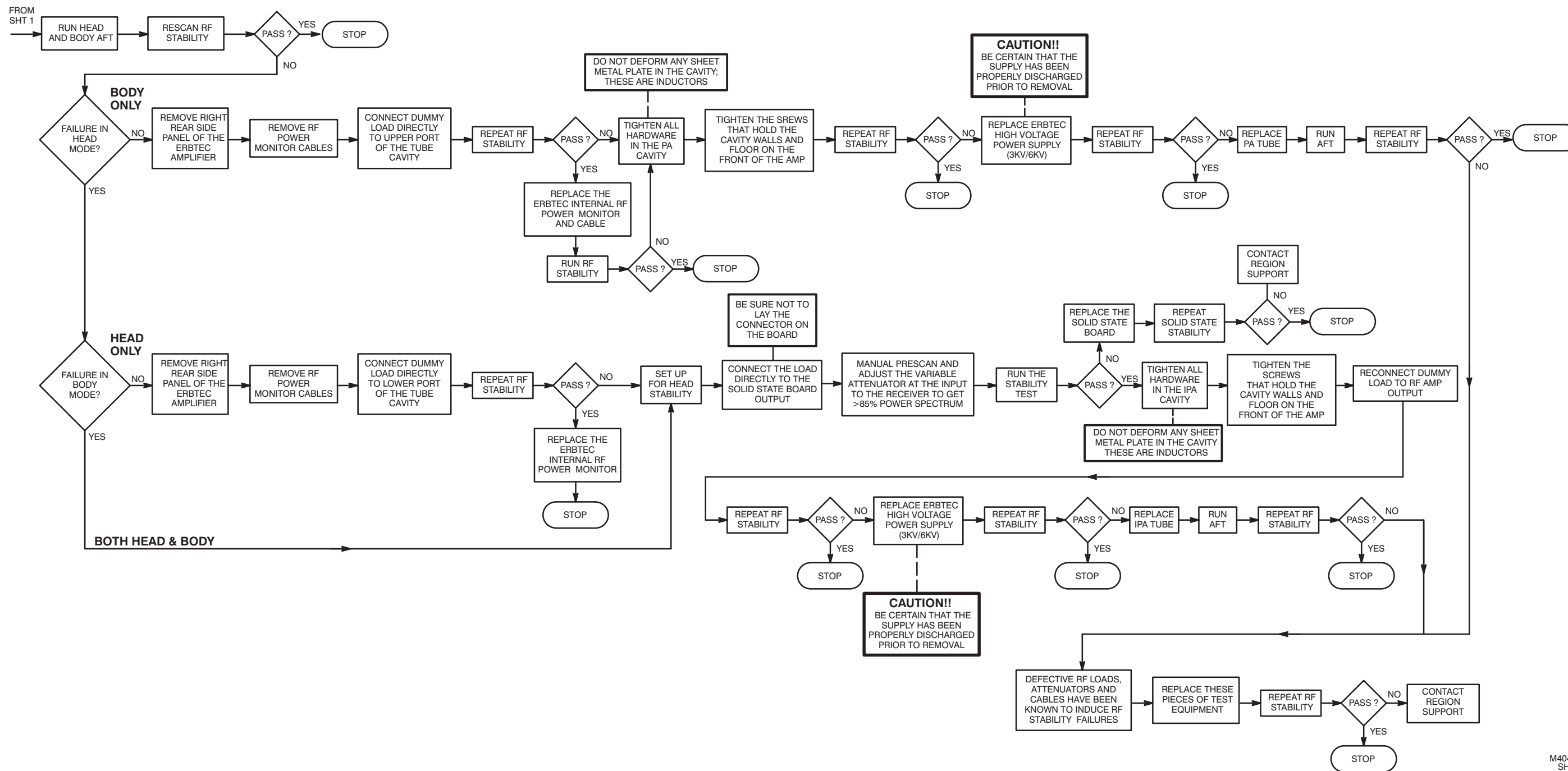
NOTES:
 RUN RF STABILITY IN BOTH MODES BEFORE BEGINNING FLOWCHART
 WHEN TROUBLE SHOOTING RF STABILITY, REMEMBER THE FOLLOWING:
 1. ALL TPS AND RF COVERS SHOULD BE ON FOR THE FOLLOWING TESTS.
 2. ALL CHANGED COMPONENTS REQUIRE A 30 MINUTE WARM UP PERIOD.
 3. AT LEAST THREE SCANS SHOULD BE RUN TO EVALUATE THE RESULTS OF EACH CHANGE.



RF INSTABILITY TROUBLESHOOTING FLOWCHART
ILLUSTRATION 2-10

M4047B
SHT 1

2-5 RF INSTABILITY TROUBLESHOOTING FLOWCHART (continued)



RF INSTABILITY TROUBLESHOOTING FLOWCHART
ILLUSTRATION 2-10 (Continued)

M4047B
SHT 2

