

## TABLE OF CONTENTS

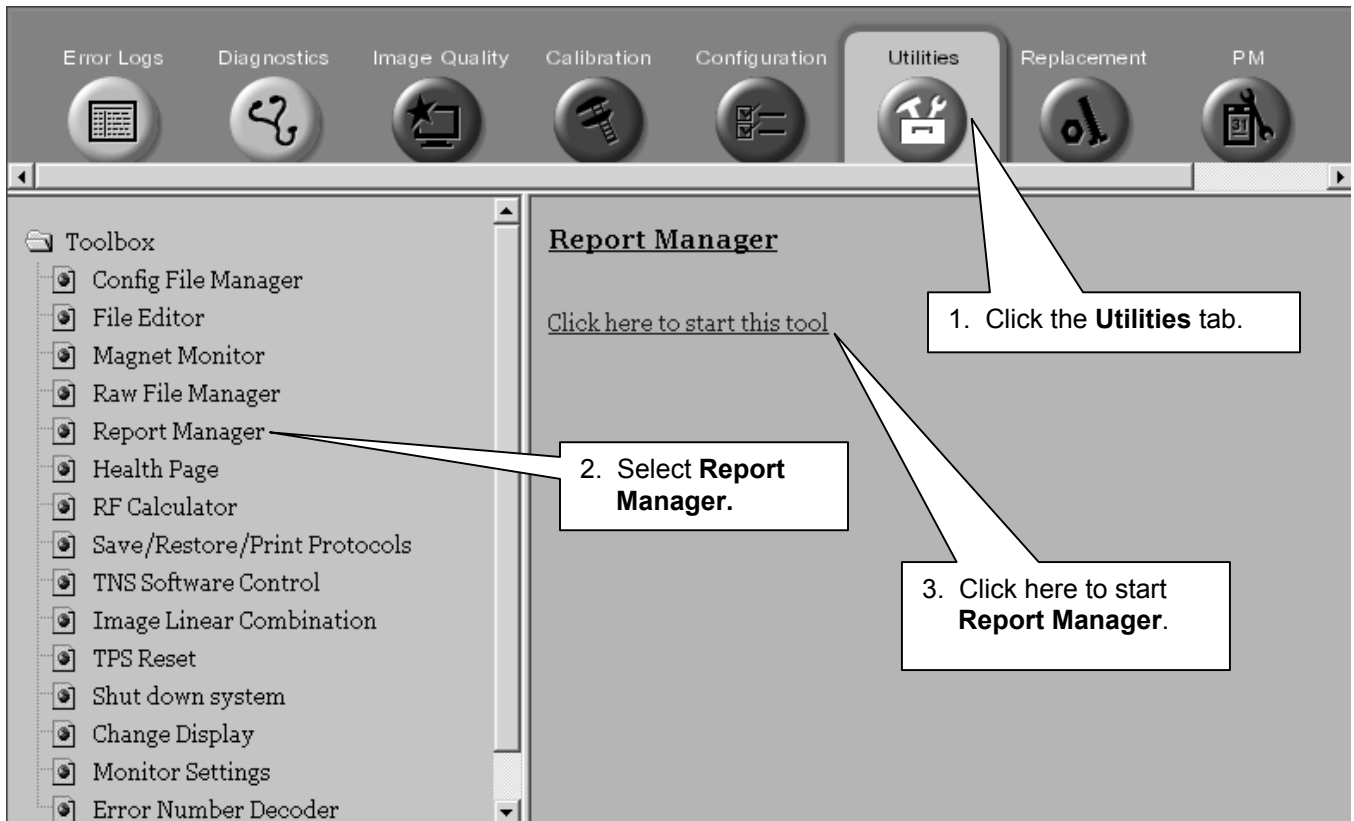
<b>1- DESCRIPTION .....</b>	<b>2</b>
<b>2- TOOL START-UP .....</b>	<b>2</b>
<b>3- MAIN MENU .....</b>	<b>2</b>
3-1 File Menu .....	3
3-1-1 Open .....	4
3-1-2 Print .....	5
3-1-3 Quit .....	5
3-2 View Menu .....	6
3-3 Report Menu .....	6
3-3-1 PM Data Sheets .....	6
3-3-2 Group Report .....	9
3-4 Trend Menu .....	9
<b>REVISION HISTORY .....</b>	<b>11</b>

## 1- DESCRIPTION

The Report Manager tool is used to view MR test result data files (“T-tests”) on the Host computer.

## 2- TOOL START-UP

1. To open the Report Manager tool, see the steps in the illustration below:

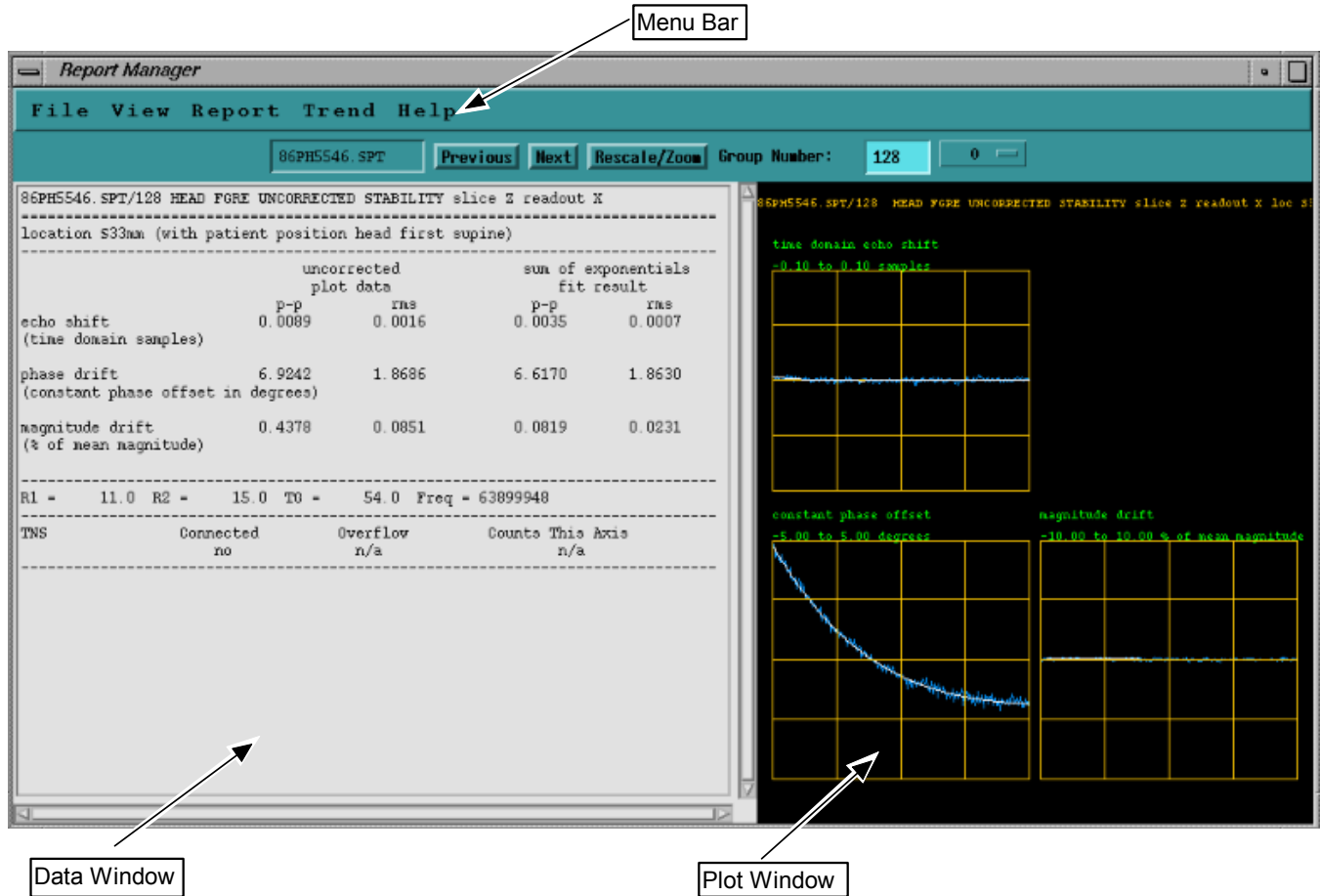


STARTING THE REPORT MANAGER TOOL  
ILLUSTRATION 2-1

2. When the computer requests your password, type in **mrgo1** then press **<Enter>**.

## 3- MAIN MENU

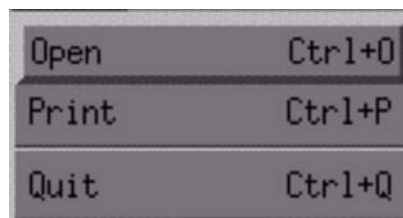
When the Report Manager tool is started, the main menu (refer to Illustration 3-1) appears on the screen. The main window is divided into three parts: the menu bar, the data window and the plot window. These three windows are actually in one window, but give a look of tiled windows. The menu bar, which appears on the top of the main screen, allows you to select different data manipulation and display options. The five selections are File, "View", Report, Trend, and Help. Each option has its own pull-down sub-menu with a further breakdown of tasks. The data window, which provides data visualization, trend analysis and an auto-data sheet generator, has the capability to scroll both in vertical and horizontal directions. The plot windows can display up to four plots per group (also called page).



REPORT MANAGER MAIN MENU  
 ILLUSTRATION 3-1

**3-1 File Menu**

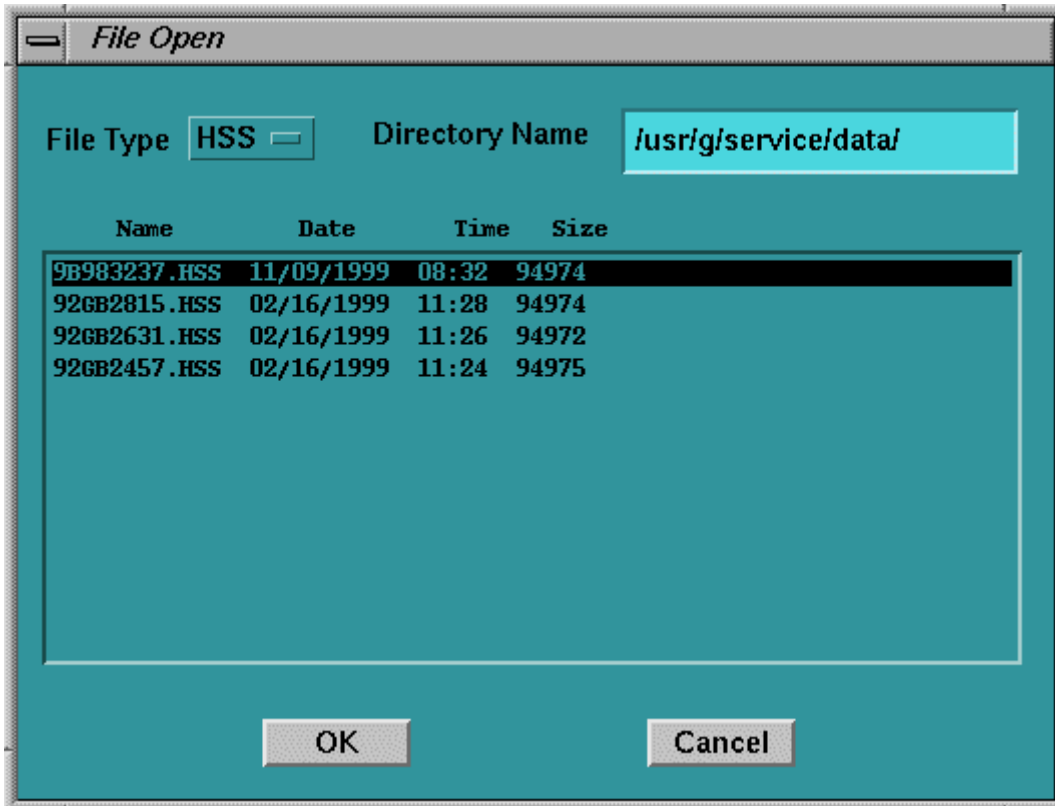
The File menu has a pull-down sub-menu as shown in Illustration 3-2. The available choices are: Open, Print, and Quit. Choose Open when the tool is started to display the list of available test files.



FILE MENU  
 ILLUSTRATION 3-2

### 3-1-1 Open

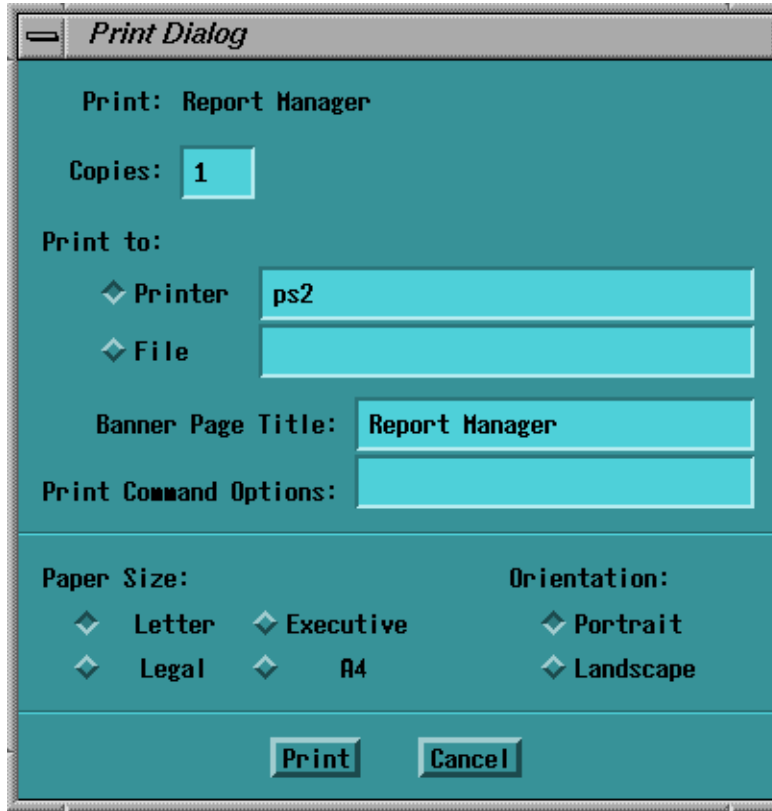
Selecting Open launches a window as shown in Illustration 3-3. The default directory name is displayed along with the test file names residing in that directory (/usr/g/service/data on the host computer). Select a file by highlighting the file name and selecting the **[OK]** button. The contents of the file will be displayed in the data window. The data directory can be changed from the default by typing a different directory name. The Open option can also be selected by pressing **Ctrl + O**.



FILE MANAGER "OPEN" WINDOW  
ILLUSTRATION 3-3

### 3-1-2 Print

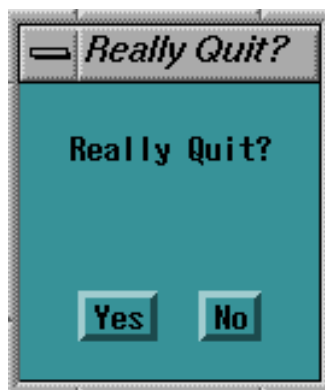
This option prints a particular report file or prints the screen to the default media. The media can be a printer or a postscript file. This application uses the system's default printer. The Print Dialog box is shown in Illustration 3-4.



PRINT DIALOG BOX  
ILLUSTRATION 3-4

### 3-1-3 Quit

When you select **[Quit]**, the Report Manager will exit after prompting you for confirmation. The confirmation dialog box is shown in Illustration 3-5. You can also select this option by pressing **Ctrl + Q**.



QUIT CONFIRMATION DIALOG BOX  
ILLUSTRATION 3-5

### 3-2 View Menu

The test files usually consist of several groups. A group consists of data and may contain one or more plots. The group is then displayed on the Main Menu Bar (refer to Illustration 3-1). Use the View option to navigate within the selected test file by using the Next and Previous selections. By default, the group numbering starts at zero in each test file. The application also displays all the valid group numbers for the selected test file.

### 3-3 Report Menu

This option is used to generate two types of reports (refer to Illustration 3-7). The “T-test” data sheets can be generated automatically.

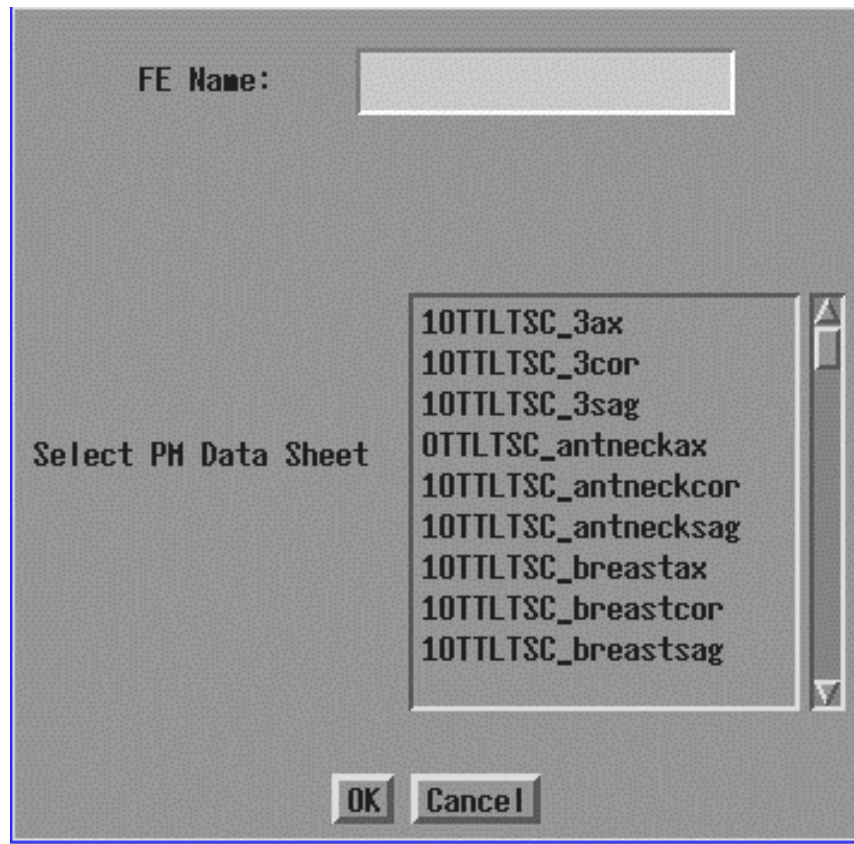


**REPORT MENU OPTIONS**  
ILLUSTRATION 3-7

#### 3-3-1 PM Data Sheets

This option is used to automatically fill in a PM data sheet from a “T-test” data file (see Illustration 3-8). The user selects a PM data sheet name, provides his/her name, and the tool then automatically fills the blanks in that file and displays the data in the data display area.

For example, to choose the 1.0T SST Head data sheet, select **10tSSTh**. Refer to Table 3-1 (1.0T) and Table 3-2 (1.5T) for the list of data sheets on the system. An example of the PM data sheet is shown in Illustration 3-9. The PM data sheets can also be generated by pressing **Ctrl + A**.



**PM DATA SHEET MENU**  
 ILLUSTRATION 3-8

1.5T SURFACE COILS TLT SPECS						
COIL SPECS.	3"	5"	5 x 11 LP	5" Back	SHOULDER	ANT. NECK
SNR: NOISE	1.04-1.94(F) 1.04-2.21(R/T)					
SNR MEAN	185-227					
TR MAP: 89-91						
85-95						
65-115						
FLIP MEAN						
FLIP SDV						
RCV MEAN						
RCV SDV						
DIFF MEAN						
DIFF SDV						

**PM DATA SHEET EXAMPLE**  
 ILLUSTRATION 3-9

TABLE 3-1  
1.0T DATA SHEET FILE NAMES

FILENAME	DESCRIPTION
10TTLTSC_3ax/cor/sag	1.0T TLT 3 inch coil axial/coronal/sagittal
10TTLTSC_antneckax/cor/sag	1.0T TLT Anterior neck coil axial/coronal/sagittal
10TTLTSC_breastax/cor/sag	1.0T TLT Breast coil axial/coronal/sagittal
10TTLTSC_gpflexax/cor/sag	1.0T TLT GPFlex Coil axial/coronal/sagittal
10TTLTSC_qcspax/cor/sag	1.0T Quadscp Coil axial/coronal/sagittal
10TTLTSC_qextax/cor/sag	1.0T TLT Quad Extremity Coil axial/coronal/sagittal
10TTLTSC_qtlax/cor/sag	1.0T TLT Quad T/L Coil axial/coronal/sagittal
10TTLTSC_shldax/cor/sag	1.0T TLT Shoulder Coil axial/coronal/sagittal
10rftH_BY	1.0T RFT - Head
10rftH_EN	1.0T RFT - Head
10rftB_BY	1.0T RFT - Body
10rftB_EN	1.0T RFT - Body
10SSTb	1.0T SST - Body
10SSTh	1.0T SST - Head
10ttlH	1.0T TLT - Head
10ttlB	1.0T TLT - Body
10ttlB_ox	1.0T TLT - Body (oxford)
10ttlH_ox	1.0T TLT - Head (oxford)

TABLE 3-2  
1.5T DATA FILE NAMES

FILENAME	DESCRIPTION
15TTLTSC_3ax/cor/sag	1.5T TLT 3 inch axial/coronal/sagittal
15TTLTSC_5bkax/cor/sag	1.5T TLT 5X11 coil axial/coronal/sagittal
15TTLTSC_5gpax/cor/sag	1.5T TLT 5 inch General Purpose coil axial/coronal/sagittal
15TTLTSC_antneckax/cor/sag	1.5T TLT Anterior neck coil axial/coronal/sagittal
15TTLTSC_lpax/cor/sag	1.5T TLT LP Coil axial/coronal/sagittal
15ttltpa_bpax/cor/sag	1.5T TLT Phased Array Breast Coil axial/coronal/sagittal
15TTLTSC_shldrax/cor/sag	1.5T TLT Shoulder Coil axial/coronal/sagittal
15ttltpa_ctlax/cor/sag	1.5T TLT Phased Array CTL coil axial/coronal/sagittal
15ttltpa_dlax/cor/sag	1.5T TLT Dual Flex coil axial/coronal/sagittal
15ttltpa_plvax/cor/sag	1.5T TLT Phased Array Pelvic coil axial/coronal/sagittal
15rftH_by	1.5T RFT - Head
15rftH_en	1.5T RFT - Head
15rftB_by	1.5T RFT - Body
15rftB_en	1.5T RFT - Body
15SSTb	1.5T SST - Body
15SSTh	1.5T SST - Head
15ttlH	1.5T TLT - Head
15ttlB	1.5T TLT - Body
15ttlB_ox	1.5T TLT - Body (oxford)
15ttlH_ox	1.5T TLT - Head (oxford)

### 3-3-2 Group Report

The group report allows the user to report all the groups in the test file at one time, or specify which groups to display. The user can specify his/her name and select the groups that need to be included in the report. The tool will then display the group report in the data display area. This option can also be selected by pressing **Ctrl + G**.

### 3-4 Trend Menu

This menu option allows you to trend the selected groups over time, provided there are several data files. Select a test type, and as many data files as needed. Illustration 3-10 shows what the trend plot looks like for a trend report on SNR over time. The Trending option is also available by pressing **Ctrl + T**.



TRENDING PLOT EXAMPLE  
ILLUSTRATION 3-10

## REVISION HISTORY

REV	DATE	AUTHOR	PRIMARY REASONS FOR CHANGE
A	Oct 7, 1997	K. L-P	Preliminary release
B	Oct 29, 1997	K. L-P	Removed summary reports section. Added FTP screens
C	Dec 10, 1997	K. L-P	Added information in PM Data Sheet section
0	Dec. 17, 1997	K. L-P	Initial release.
1	Jul. 28, 1998	R.K.	Updated for Release CV1.
2	Feb. 11, 1999	K. Keshena	Updated based on Engineering Bay Validation.
3	Nov 15, 1999	M. Keber	Updated sections 3-1, 3-1-1, and 3-1-4 for choices no longer available starting with Release 8.3 (New Window, Close Window); updated Illustration 3-3 based on bay validation.
4	May 25, 2000	M. Jones	Deleted references to using report manager on PC. Revised description of main menu window under "3- MAIN MENU." Removed obsolete Section 4, "SGI-HOST to PC FILE TRANSFER."
5	Aug 16, 2000	M. Jones	Deleted old sections 3-1-1 and 3-1-4. Updated file menu items for 8.4 M4.
6	Mar 13, 2002	Hawthorne	Minor validation updates through out fixing wording
7	Oct. 15, 3003	C. MacDonald	Added new Report Manager start procedure in Section 2; added document footer.