

SERVICE NOTES

October 25, 2000

Page 1 OF 4

FILE TITLE

Signa[®] Mobile

SN 67034

MR MOBILE VAN/SYSTEM TROUBLESHOOTING GUIDE

EFFECTIVITY:

All mobile MR vans for which there is a suspected vibration, chiller, or HVAC problem.

PROBLEM:

For some problems in the field it can be difficult to determine if the root-cause of the problem is associated with the MR System or with the van components, such as the chiller or HVAC system. This is due to the MR System dependency on chilled water and the environmental control system.

SOLUTION:

If a suspected vibration, chiller, or HVAC problem exists, follow one of the following flowcharts to pinpoint possible causes or solutions. If the results of the investigation suggest a GE issue, then service the equipment. Otherwise, contact the customer or specific van partner and present the supporting troubleshooting data. These flowcharts are general to all mobiles, and not specific to any one manufacturer or system. Hence, slight variations may occur.

Note:

Every van is shipped with an operator's and a service manual. These manuals have detailed information concerning the operation and service requirements of all van components. If the manuals are missing, please contact the customer or the van manufacturer

Note:

These flowcharts will be archived in the mobile section of Service Methods, both on the web and on the CD-ROM. The procedures will be updated as systems and vans change.

Sean Josephson
MR MOBILE ENGINEERING

SERVICE NOTES

October 25, 2000

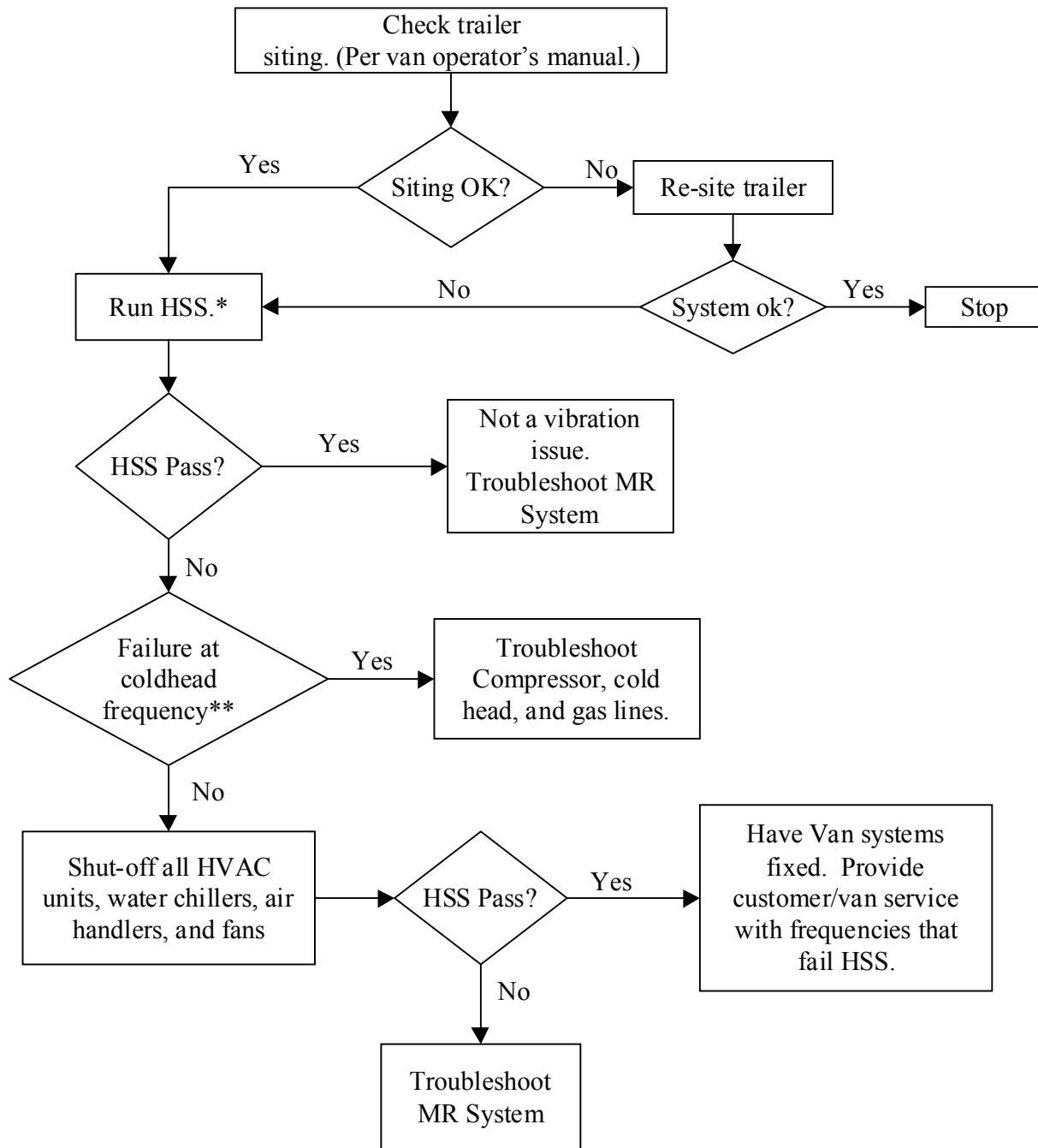
Page 2 OF 4

FILE TITLE

Signa[®] Mobile

SN 67034

If you believe you have a vibration problem...



RETURN POWER TO ALL COMPONENTS SHUT-OFF DURING TROUBLESHOOTING PRIOR TO LEAVING THE SYSTEM. Confirm that the Compressor and Cold Head are operating.

* Refer to SYSTSC4 on the Service Methods CD-ROM for pass/fail criteria for HSS.

** Coldhead frequency is 1.2hz. for Sumitomo and 2.4hz for Leybold systems.

SERVICE NOTES

October 25, 2000

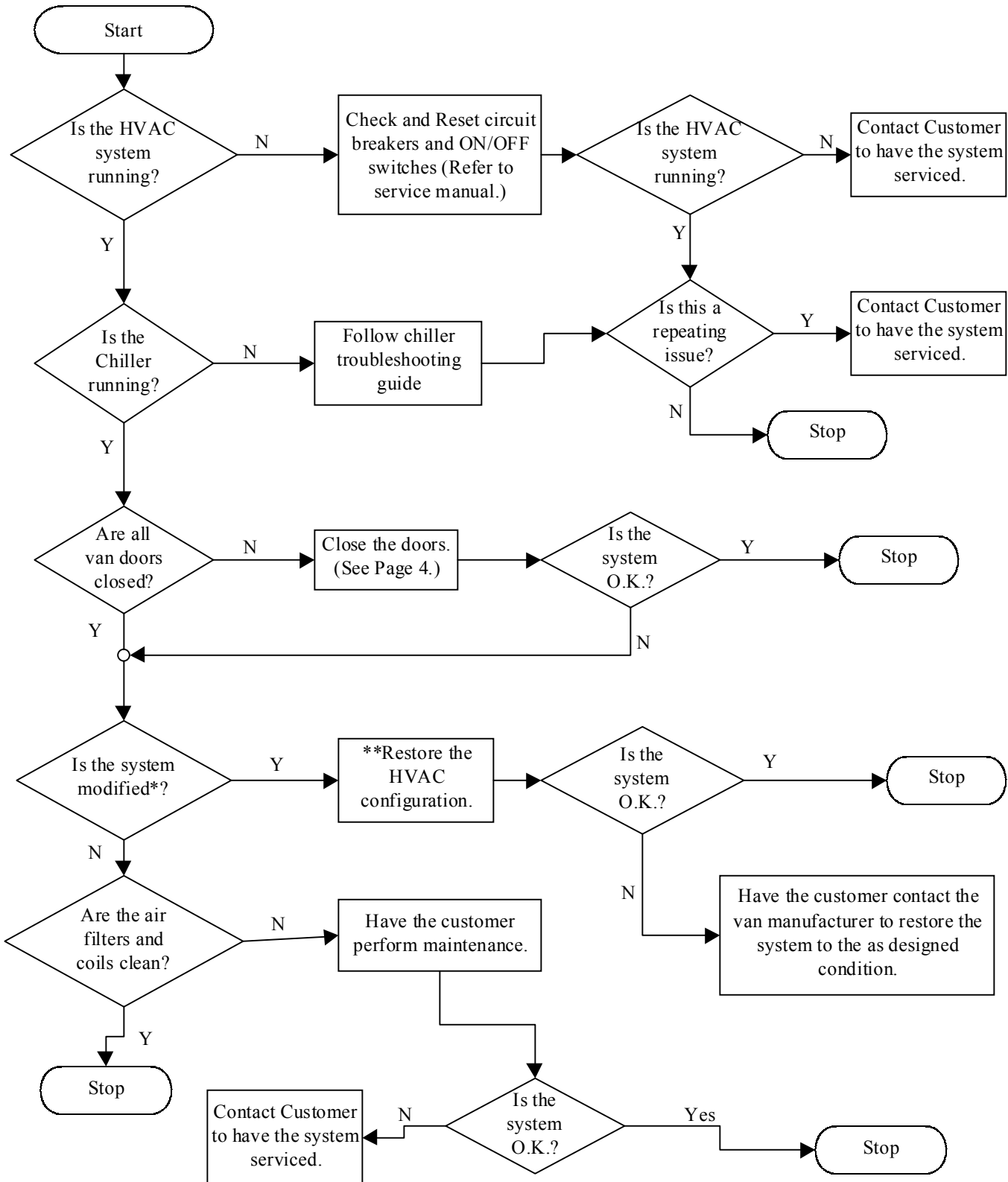
Page 3 OF 4

FILE TITLE

Signa[®] Mobile

SN 67034

If you believe you have a HVAC problem...



*By modified, look for covered vents, obviously changed controls, or custom components that can be easily observed.

** Do not change anything more than uncovering vents. Any additional modifications must be performed by the van manufacturer.

SERVICE NOTES

October 25, 2000

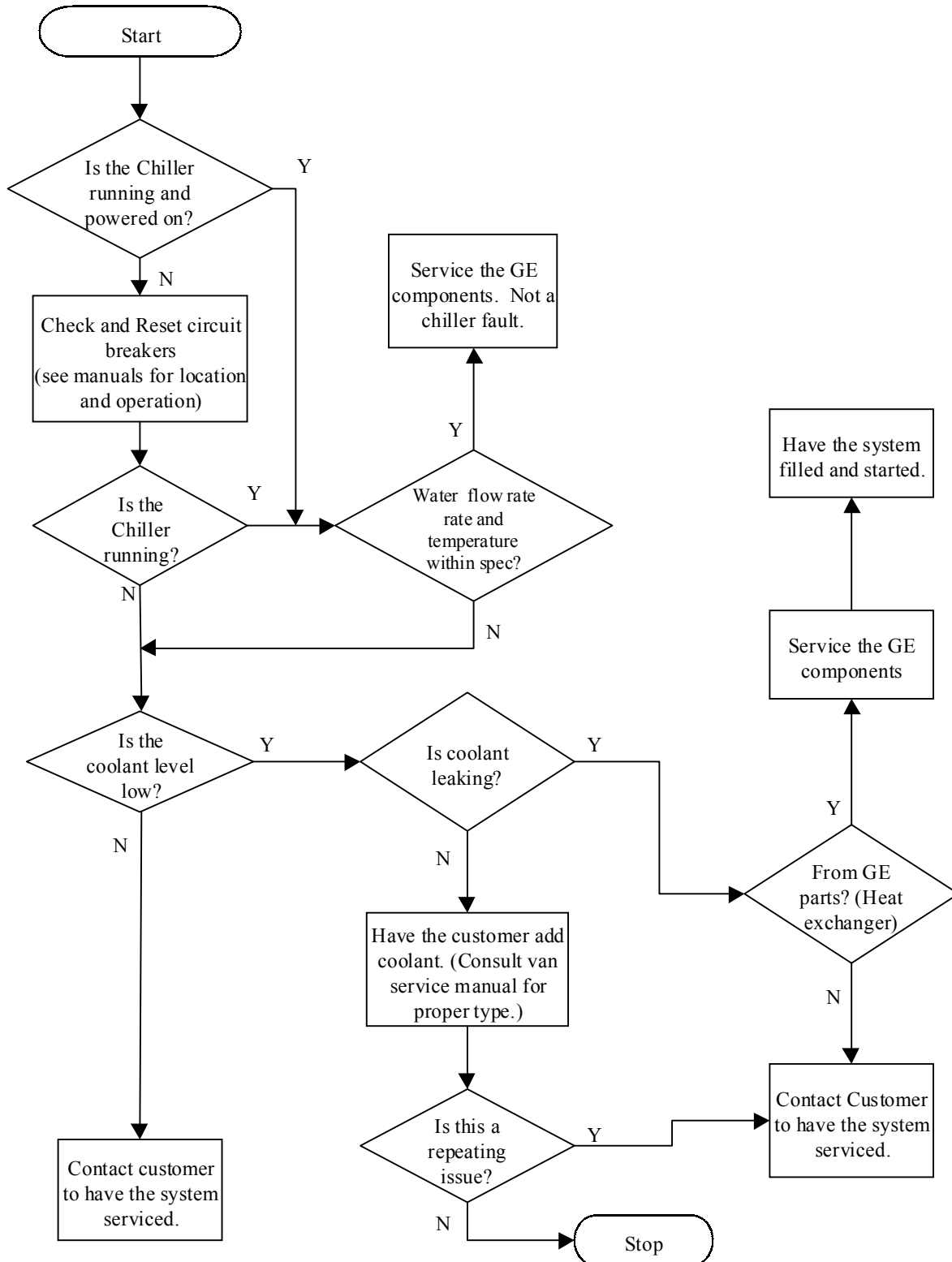
Page 4 OF 4

FILE TITLE

Signa[®] Mobile

SN 67034

If you believe you have a chiller problem...



Note: Refer to the operator's and service manuals for the correct coolant mixture type. Incorrect fluid can damage the system.