

TABLE OF CONTENTS

table of contents.....	1
Description.....	2
Power up LED Error Code Flashing Decode Table.....	2
On Power Up Ready LED Error Flashing Flow Chart	3
A.3 Power Failure Flow Chart.....	4
A.4 Cartridge Load Failure Flow Chart	5
A.5 Cartridge Eject Failure Flow Chart	6
A.6 SCSI Errors Flow Chart.....	7
A.7 Manual Cartridge Removal.....	8
revision history.....	9

DESCRIPTION

This is a reprint of the Maxoptrix Troubleshooting guide for the TMT5-2600 MOD. Setup and Calibrations for this drive are found in document, ow2rea2, Work Space Cabinet Replacements, Octane.

POWER UP LED ERROR CODE FLASHING DECODE TABLE

The following are error codes that are flashed on the drive’s front LED on power up if a problem exists. The LED flashing sequence is:

Red -> off -> Color1 -> off -> Color2 -> off ->Color3 -> off -> Color4 -> off, then repeat until the error condition goes away or power is removed.

Error	Color 1	Color 2	Color 3	Color 4
RAM Test Failure	Orange	Orange	Orange	Orange
SCSI Reset Always Asserted (See Termination Probe).	Orange	Orange	Orange	Green
DSP Watchdog Timer Failure	Orange	Orange	Green	Orange
Microcode Checksum Failure	Orange	Orange	Orange	Green
SCSI Chip Test Failure	Orange	Green	Orange	Orange
ENDEC Chip test Failure	Orange	Green	Orange	Green
Power Supply Fault	Orange	Green	Green	Orange
Over Temperature Fault	Orange	Green	Green	Green
Disk Buffer Test Failure	Green	Orange	Orange	Orange
DSP ROM Cecksum Failure	Green	Orange	Orange	Green
DSP RAM R/W Test Failure	Green	Orange	Green	Orange
Invalid Values Found in Non-Volatile Memory	Green	Orange	Green	Green
Loader Failure Or Eject	Green	Green	Orange	Orange
Spin-Up or Spin-Down Fault	Green	Green	Orange	Green

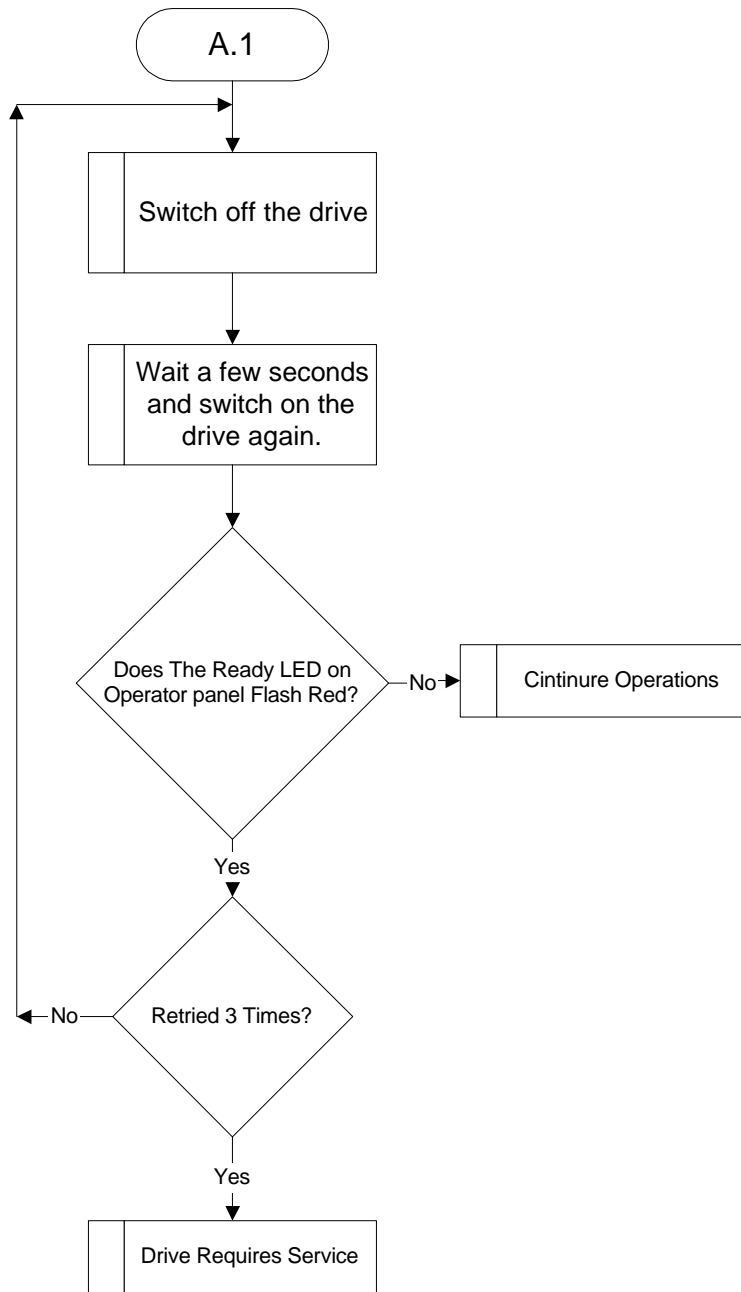
Troubleshooting Flow Charts

Before you begin troubleshooting, check the following items:

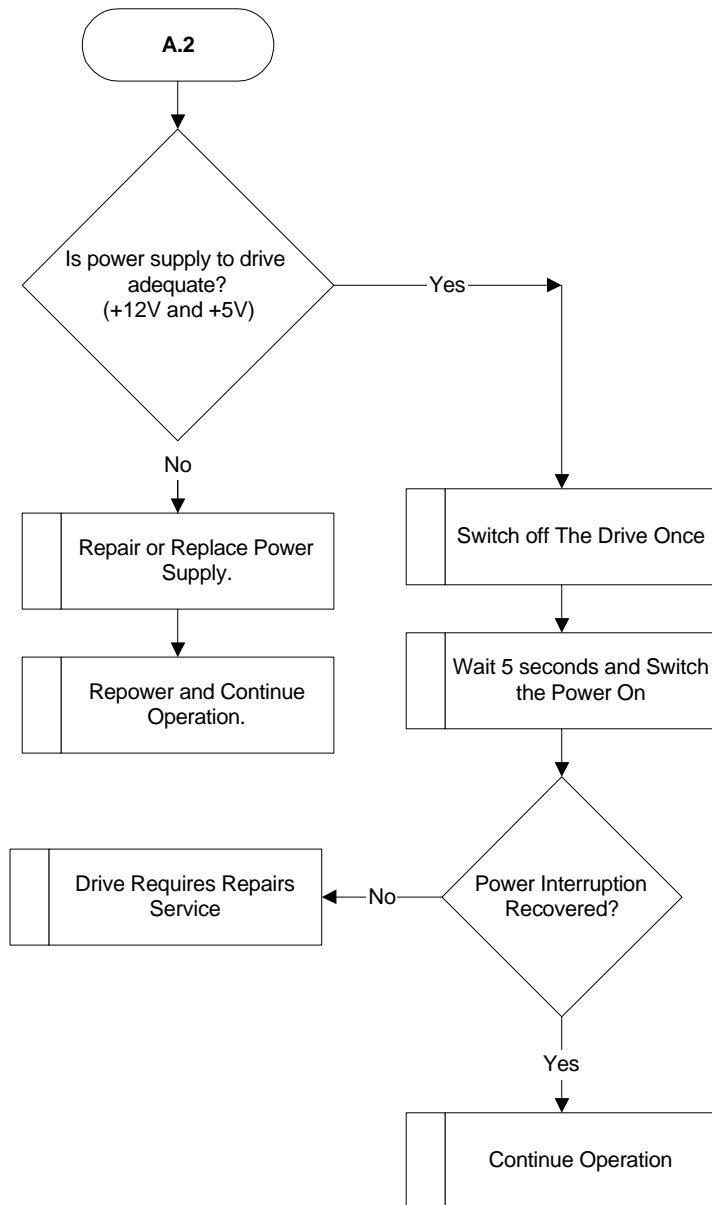
1. Check the SCSI connector.
2. Check the SCSI address for conflict with other SCSI devices.
3. Change the cartridge and try the same operation.

If the troubleshooting techniques in the following section cannot recover the drive, repairs are required.

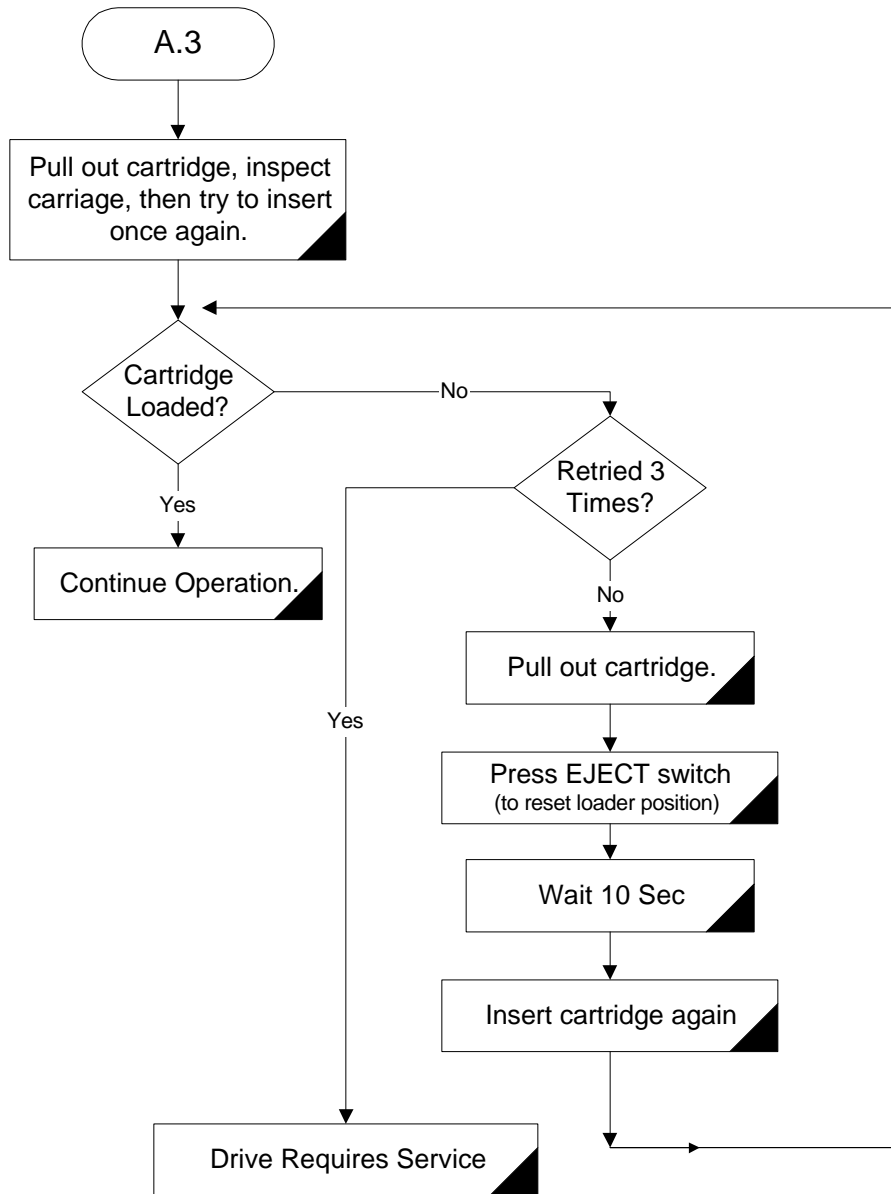
ON POWER UP READY LED ERROR FLASHING FLOW CHART



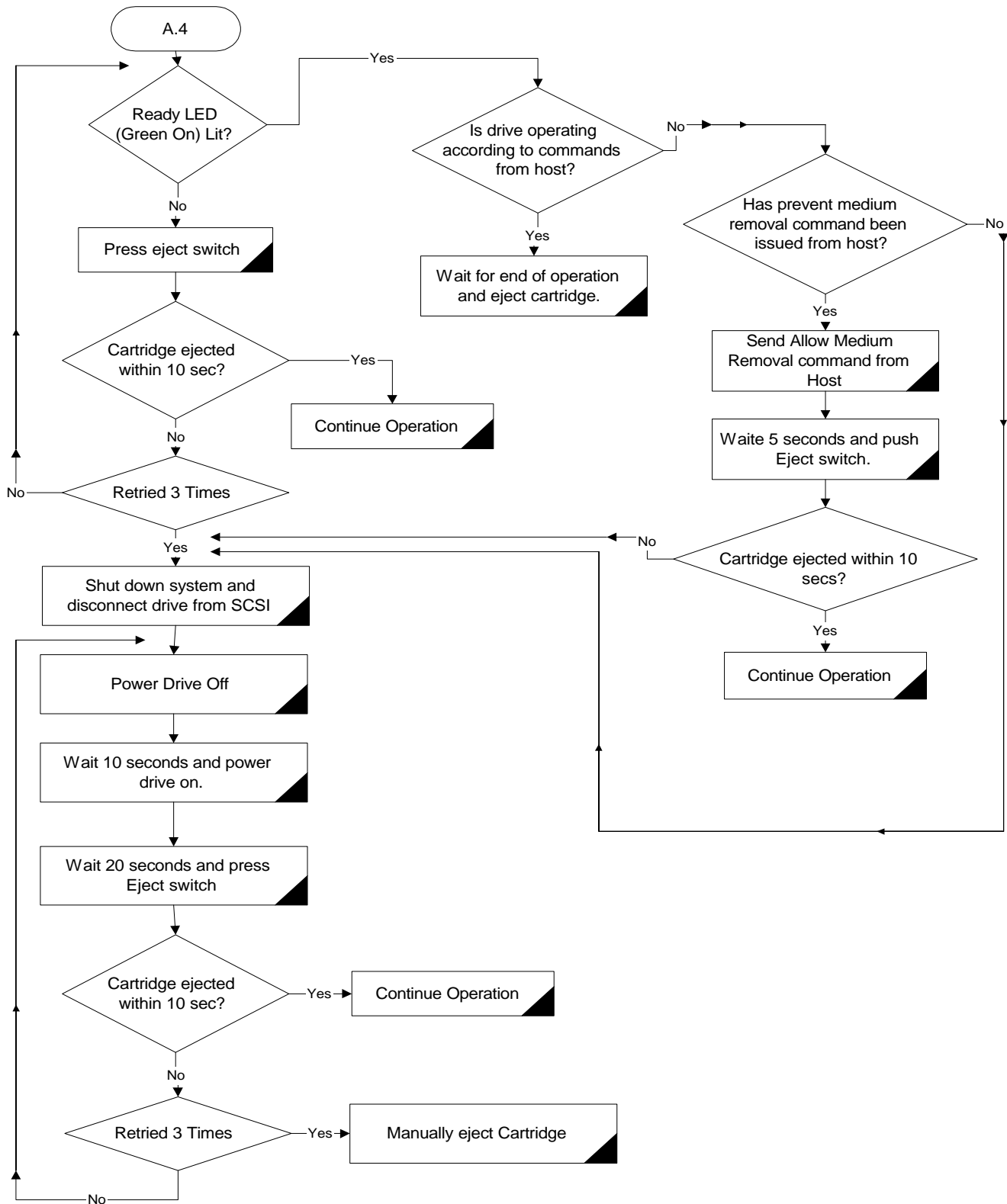
A.3 POWER FAILURE FLOW CHART



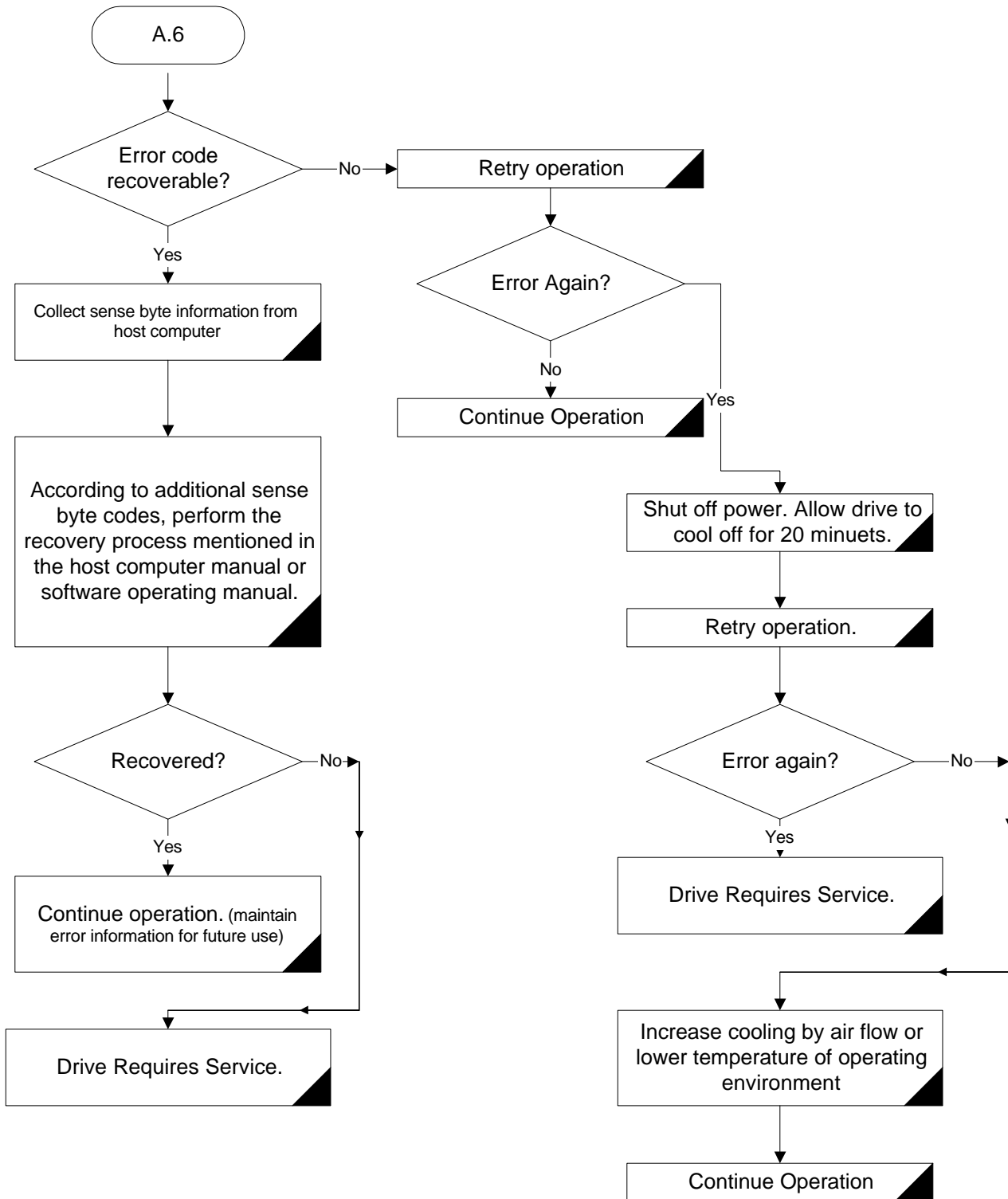
A.4 CARTRIDGE LOAD FAILURE FLOW CHART



A.5 CARTRIDGE EJECT FAILURE FLOW CHART



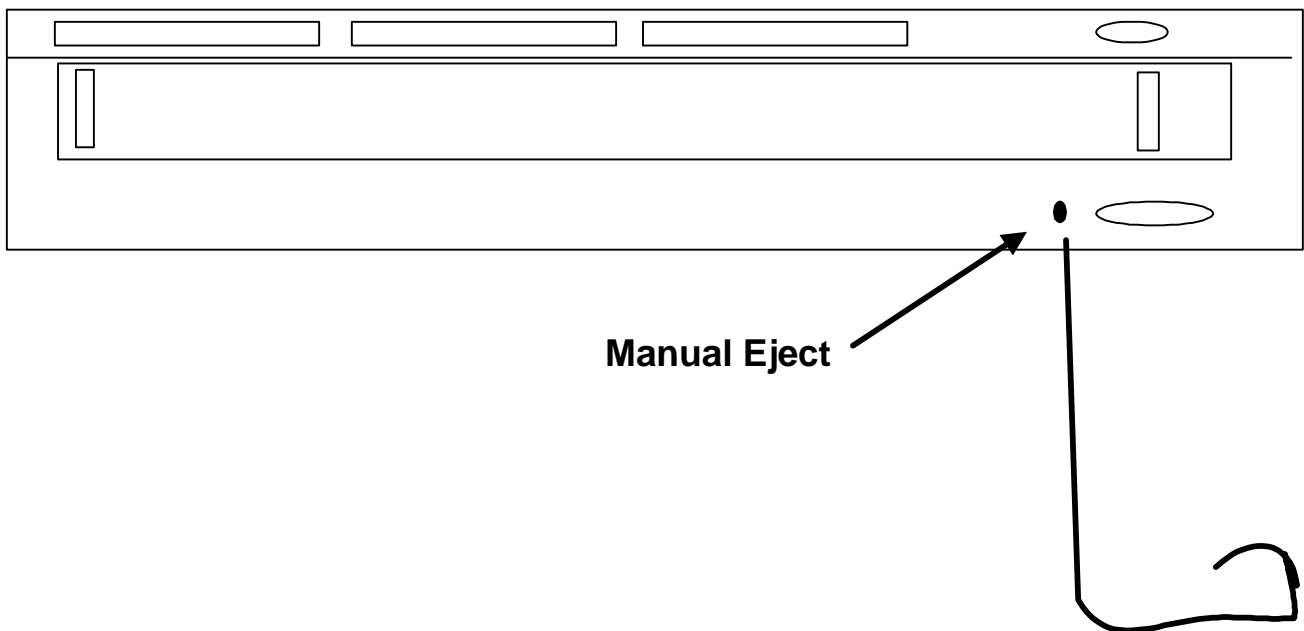
A.6 SCSI ERRORS FLOW CHART



A.7 MANUAL CARTRIDGE REMOVAL

If you cannot remove a media cartridge from the drive, this manual method may help.

1. Turn off power to the drive.
2. Straighten a paper clip as shown below.
3. Push the straightened end of the paper clip into the cartridge eject hole.
4. You will feel resistance when the clip is in the hole about 3/8 inch.
5. Continue pushing the clip in until the disk ejects. The paper clip will be approximately one inch into the drive at this point,
6. Inspect the disk cartridge for damage and replace.



REVISION HISTORY

REV	DATE	AUTHOR	PRIMARY REASONS FOR CHANGE
0	Aug 3, 1999	R. Hawthorne	New Manual for Troubleshooting TMT5-2600 MOD drives.