

TABLE OF CONTENTS

TABLE OF CONTENTS	1
1- OVERVIEW	2
2- CREATE A CD-ROM	2
2-1 Download A Software Patch.....	2
2-2 Patch CD-ROM Creation	4
REVISION HISTORY	8

1- OVERVIEW

This document provides the necessary steps to create a CD of a downloaded software patch using the *Sonic™ RecordNow! Plus* Software program.

2- CREATE A CD-ROM

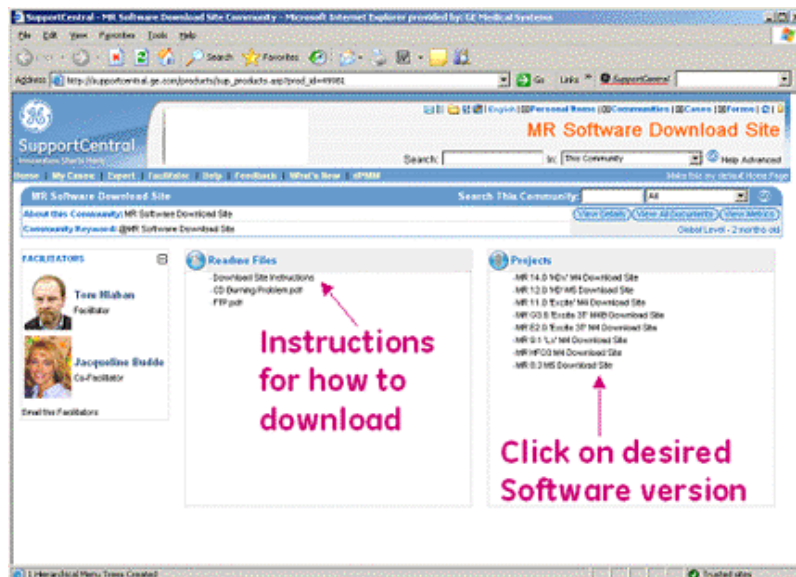
2-1 Download a Software Patch

1. Create a directory on your desktop for the patch download. **IMPORTANT**, the patches **MUST** end up in directory called `dist`. Create a folder with the software revision, for example: `91.29I_M4_0311 .b` then a sub-directory called `dist`.



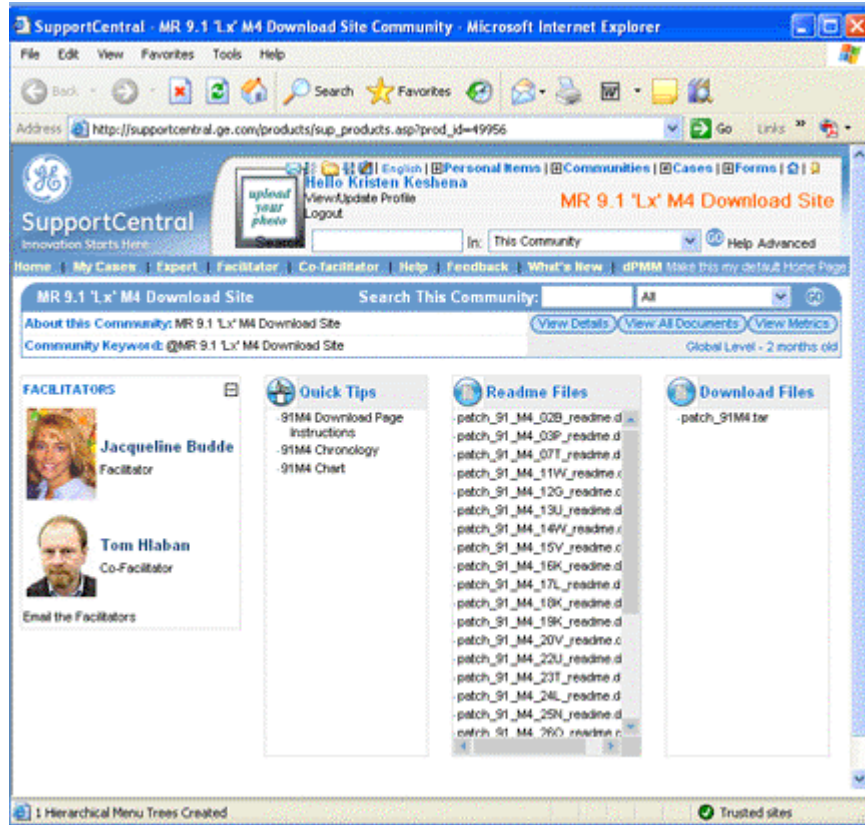
EXAMPLE OF DIRECTORY STRUCTURE
ILLUSTRATION 2-1

2. Go online and log into the MR Software Download Site at the following URL:
http://supportcentral.ge.com/products/sup_products.asp?prod_id=49981
3. Under the *Projects* heading, select the software version of the system. See Illustration 2-2.



MR SOFTWARE DOWNLOAD SUPPORT CENTRAL SITE
ILLUSTRATION 2-2

4. A Download Site specific to the software version will display with all of the available patches. Make sure the Readme files are also downloaded to burn to the CD.



MR 9.1 'LX' M4 DOWNLOAD SITE
ILLUSTRATION 2-3

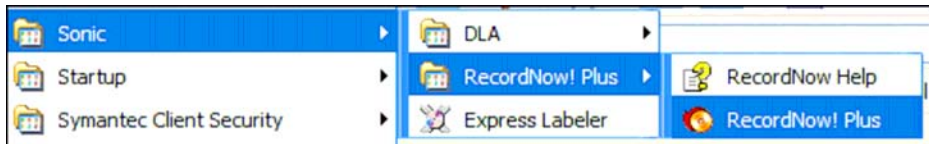
5. Click on the patch file listed in *Download Files*.
6. The File Download window will display, click [Save].
7. Save the patch to the directory created in step 1.

2-2 Patch CD-ROM Creation

Note

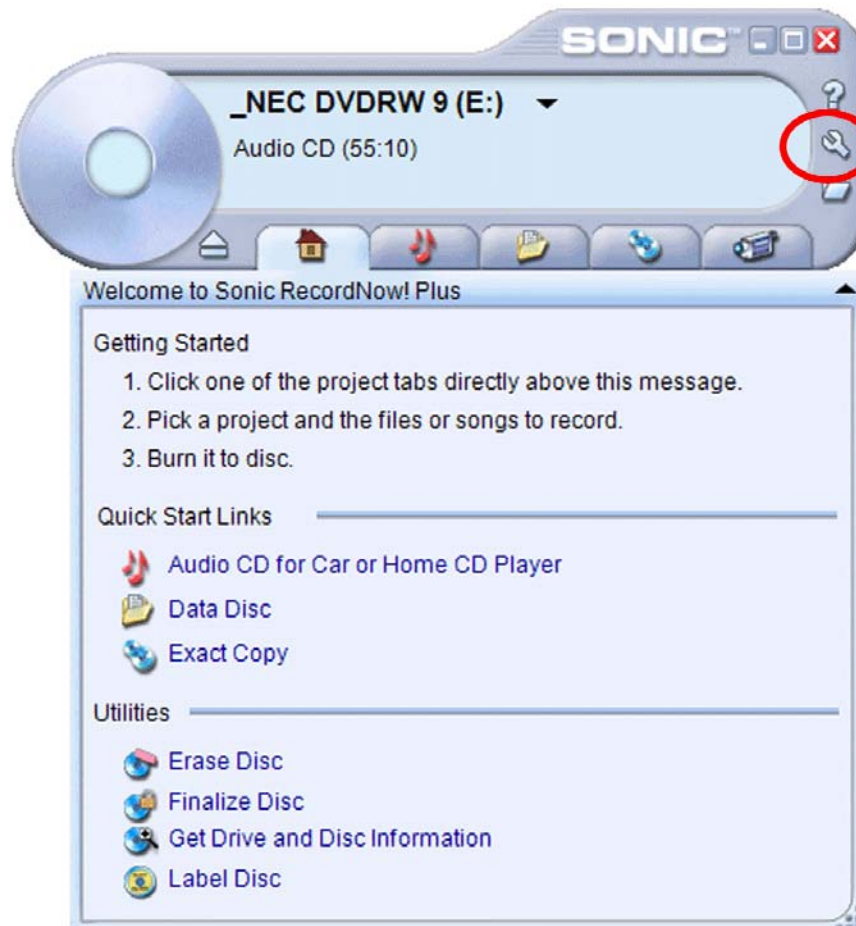
Sonic™ RecordNow! Plus must be loaded on the laptop, if not, load it from the D610 Laptop Supplemental disk provided with the laptop deployment.

1. Place a blank CD-ROM in the CD-ROM drive of the laptop.
2. Once the laptop recognizes a blank CD-ROM, *Sonic™ RecordNow! Plus* program should launch automatically. If it does not, access the software application as follows:
 - a. Select [Start].
 - b. Select *Programs => Sonic => RecordNow! Plus => RecordNow! Plus*.



SOFTWARE PATH
ILLUSTRATION 2-4

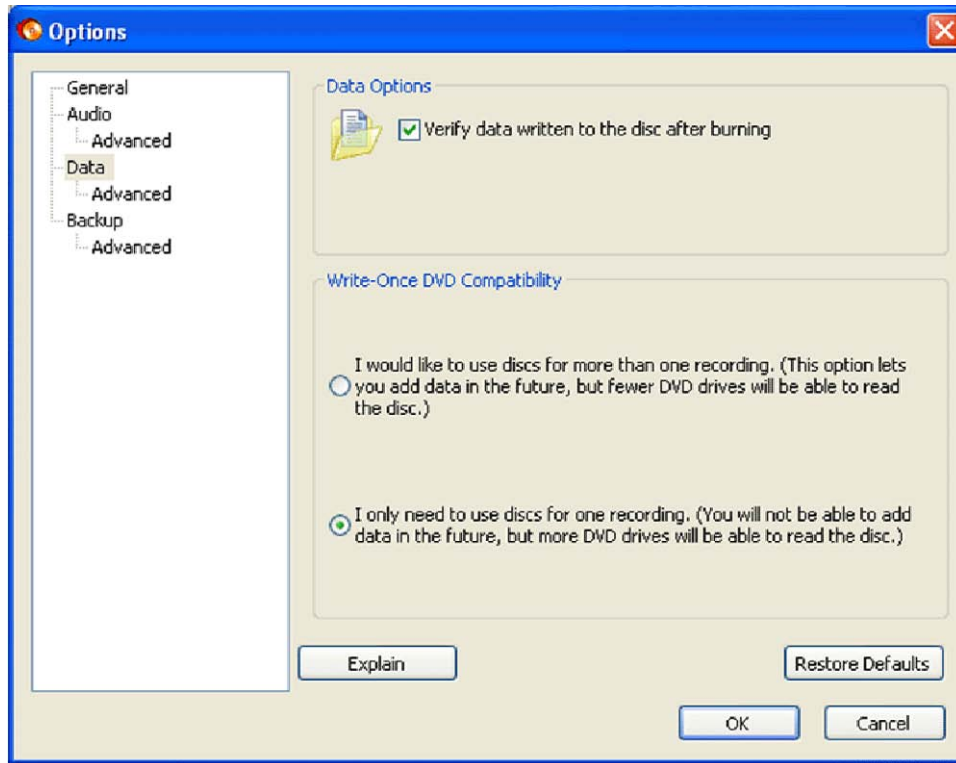
3. The main screen displays.



SONIC MAIN SCREEN
ILLUSTRATION 2-5

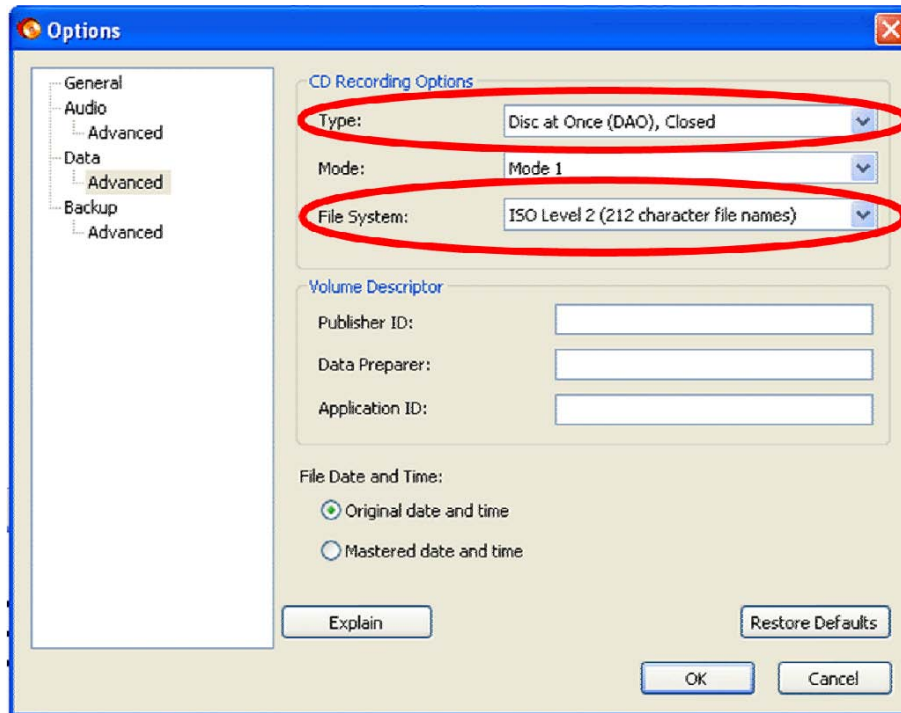
4. Select the Wrench on the upper right side of the screen.

- 5. This displays the *Options* screen. Select *Data* on the left side and make sure the settings are the same as shown in Illustration 2-6.



OPTIONS SCREEN
ILLUSTRATION 2-6

- 6. Under *Data*, select *Advanced*.



DATA => ADVANCED SCREEN
ILLUSTRATION 2-7

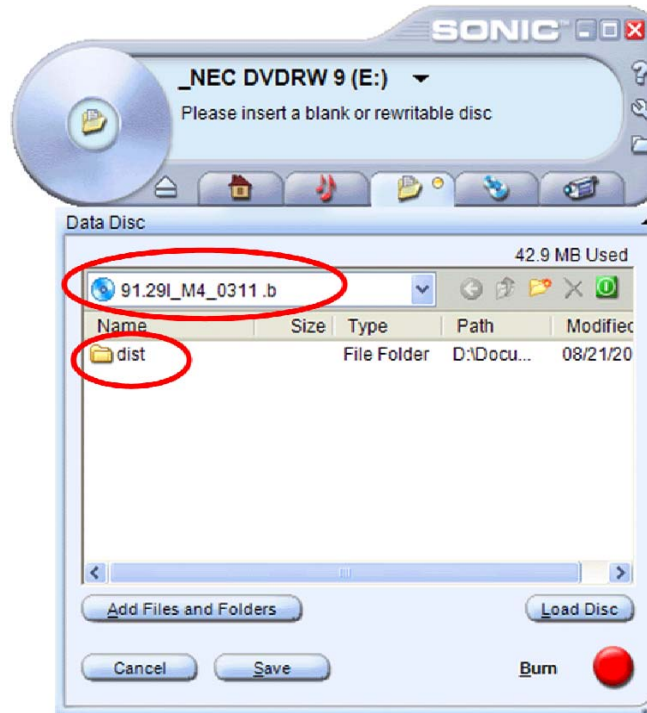
- 7. Make sure that *Type:* and *File System* is set as listed above.

- 8. Click [OK].
- 9. Select *Data Disk* as shown in Illustration 2-8.




MAIN SCREEN, DATA DISC SELECTION
ILLUSTRATION 2-8

- 10. The Data Disc screen displays.



DATA DISK SCREEN
ILLUSTRATION 2-9

11. Click on the words, *Volume Label* and type in the Patch revision information, so it is similar to what is shown in Illustration 2-9.
12. In the Explorer window, select the `dist` directory created in section 2-1, drag it into the window shown in Illustration 2-9.

13. Click the  button.

14. Once completed eject the disk and label with a Sharpie marker.

15. Continue with patch installation on the system host using SWMGR (for 9x or 10x) or the Install GUI (for 11x and above).

REVISION HISTORY

REV	DATE	AUTHOR	PRIMARY REASONS FOR CHANGE
1	Aug. 21, 2006	K.Keshena	Initial release.
2	Feb. 19, 2007	K.Keshena	Updated the URL for the MR Download Software Support Central site and added screens of the Support Central site.